



LG env2 vx9100 Camera Replacement

This guide contains instructions for accessing and installing the camera.

Written By: Reed Williston



INTRODUCTION

In this guide you will be removing the back panel to access the motherboard. Once you have reached the motherboard you will remove the camera lens from the motherboard.

TOOLS:

- [Phillips #0 Screwdriver](#) (1)
 - [Spudger](#) (1)
-

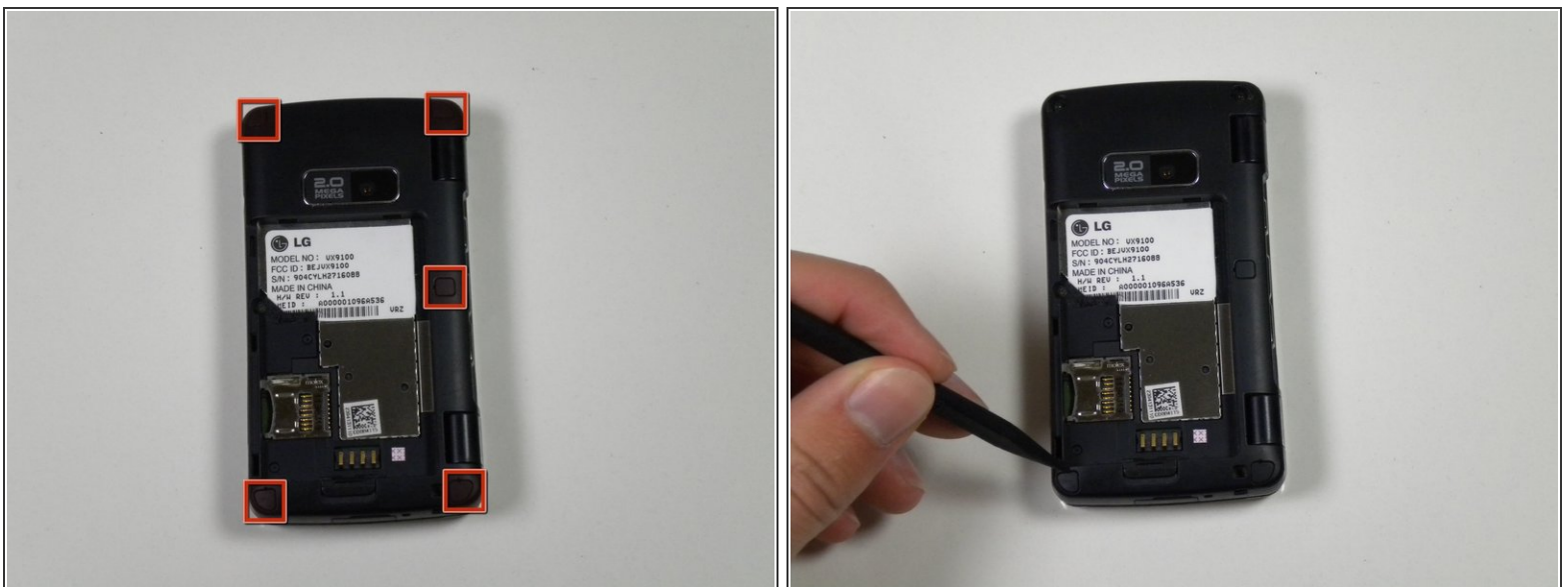
Step 1 — Battery



⚠ Before disassembling your phone, be sure it is powered off to avoid minor electric shock or possible fire.

- Place the phone facedown on the table.
- Use your fingernail (or a small screw driver) to pull down the tab below the battery.
- Lift the battery out.

Step 2 — Back Panel



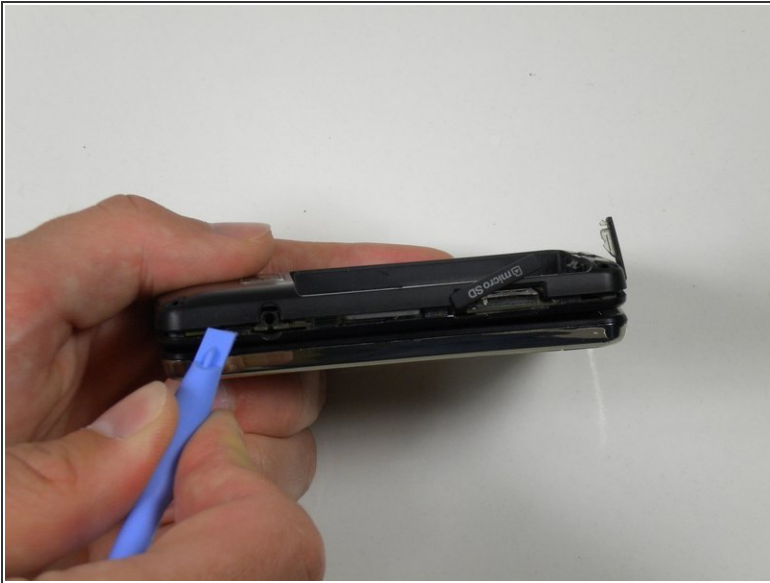
- Locate the five rubber covers on the back panel of the phone.
- Use the metal probe to pop out each rubber cover to reveal the screws underneath.

Step 3



- Locate the six 2.5mm screws on the back panel of the phone.
- Use a #00 Phillips screwdriver to remove each 2.5mm screw.

Step 4



- Locate the seam around the edge of the phone.
- Insert the plastic opening tool into the seam and pry gently to release the tabs.
- Work your way around the phone until all tabs are released.
- Remove the back panel of the phone.

Step 5 — Camera



- Locate the ribbon attached to the lens of the camera.
- Place the plastic opening tool in between the logic board and ribbon.
- Lift up the plastic opening to detach the ribbon from the logic board.

Step 6



- Place the plastic opening tool in between the lens and the logic board.
- Detach the lens from the logic board using the plastic opening tool by popping it out.
- Take the entire lens and ribbon off of the logic board.

To reassemble your device, follow these instructions in reverse order.

This document was last generated on 2019-07-18 01:52:07 AM.