



# LG env2 vx9100 Inside Keyboard Replacement

This guide contains instructions on accessing and installing the inside keyboard.

Written By: Reed Williston



---

## INTRODUCTION

In this guide you will be removing the back panel and motherboard to access and remove the inside keyboard.

---

### TOOLS:

- [Phillips #0 Screwdriver](#) (1)
  - [Spudger](#) (1)
-

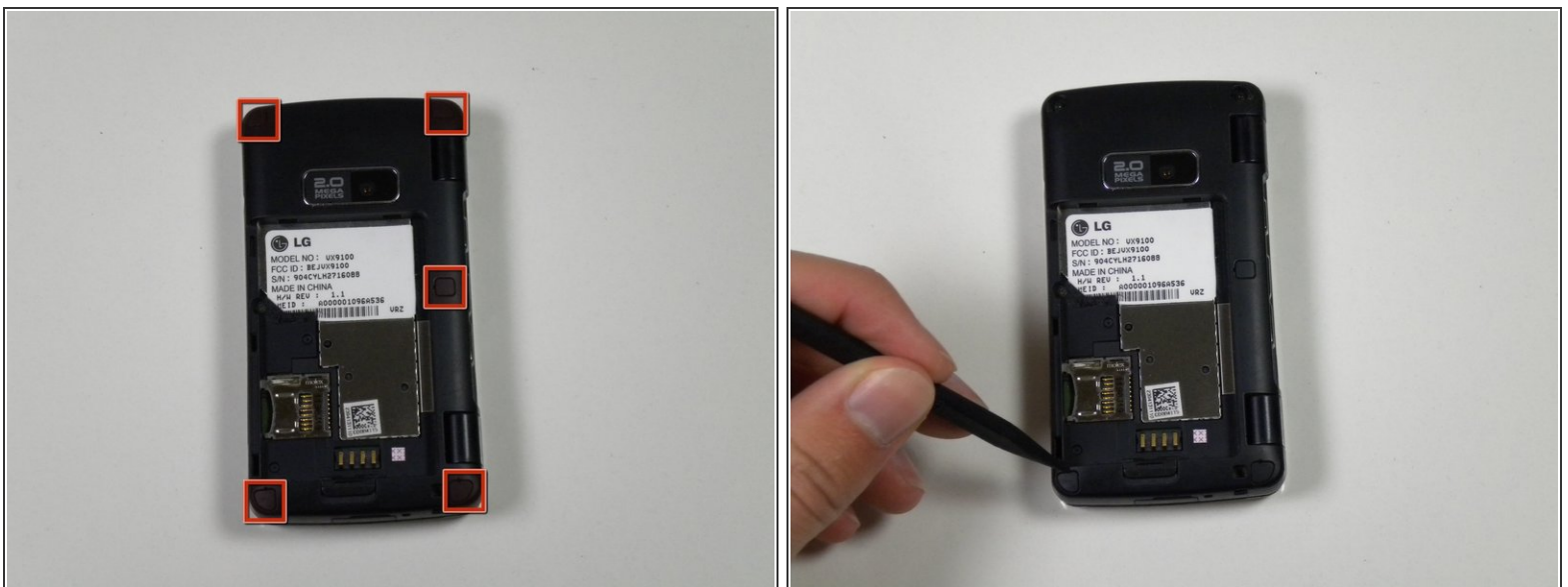
## Step 1 — Battery



**⚠** Before disassembling your phone, be sure it is powered off to avoid minor electric shock or possible fire.

- Place the phone facedown on the table.
- Use your fingernail (or a small screw driver) to pull down the tab below the battery.
- Lift the battery out.

## Step 2 — Back Panel



- Locate the five rubber covers on the back panel of the phone.
- Use the metal probe to pop out each rubber cover to reveal the screws underneath.

### Step 3



- Locate the six 2.5mm screws on the back panel of the phone.
- Use a #00 Phillips screwdriver to remove each 2.5mm screw.

## Step 4



- Locate the seam around the edge of the phone.
- Insert the plastic opening tool into the seam and pry gently to release the tabs.
- Work your way around the phone until all tabs are released.
- Remove the back panel of the phone.

## Step 5 — Inside Keyboard



- Locate the silver strip connected to the logic board. The silver strip is closest to the bottom hinge of the phone.
- Wedge the plastic opening tool in between the silver strip and the logic board.
- Lift the plastic opening tool to separate the silver strip from the logic board.

## Step 6



- Wedge the plastic opening tool in between the logic board and the phone.
- Lift the plastic opening tool to separate the logic board from the phone.

## Step 7



- Locate the back of the inside keyboard.
- Take out the inside keyboard. You may need to use your fingernail to pull one of the corners up.

To reassemble your device, follow these instructions in reverse order.

This document was last generated on 2019-07-14 03:42:19 AM.