



LG env2 vx9100 Side Buttons Replacement

This guide contains instructions to installing the side volume and camera buttons.

Written By: Reed Williston



INTRODUCTION

In this guide you will be taking off the back panel to access and remove the side volume and camera buttons.

TOOLS:

- [Phillips #0 Screwdriver](#) (1)
 - [Spudger](#) (1)
-

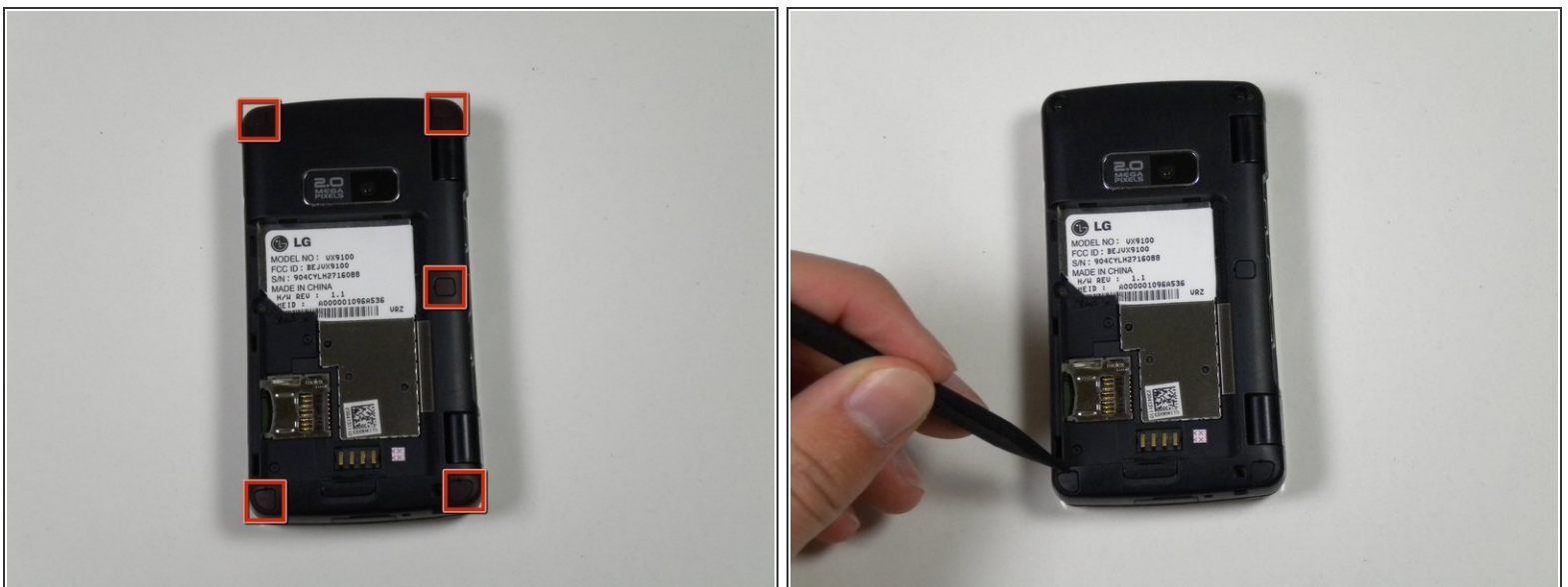
Step 1 — Battery



⚠ Before disassembling your phone, be sure it is powered off to avoid minor electric shock or possible fire.

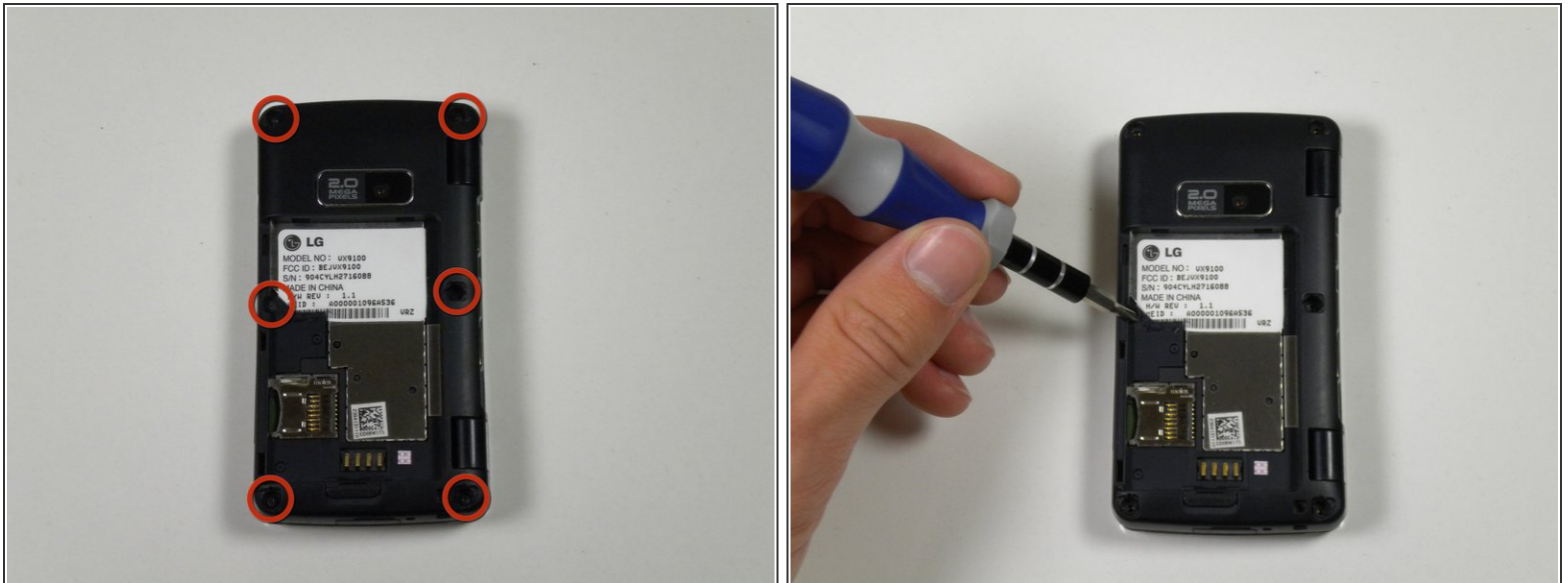
- Place the phone facedown on the table.
- Use your fingernail (or a small screw driver) to pull down the tab below the battery.
- Lift the battery out.

Step 2 — Back Panel



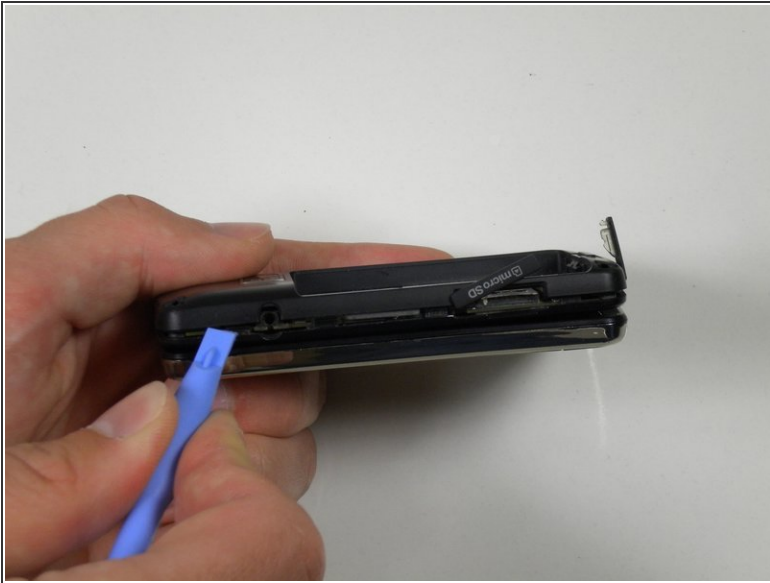
- Locate the five rubber covers on the back panel of the phone.
- Use the metal probe to pop out each rubber cover to reveal the screws underneath.

Step 3



- Locate the six 2.5mm screws on the back panel of the phone.
- Use a #00 Phillips screwdriver to remove each 2.5mm screw.

Step 4



- Locate the seam around the edge of the phone.
- Insert the plastic opening tool into the seam and pry gently to release the tabs.
- Work your way around the phone until all tabs are released.
- Remove the back panel of the phone.

Step 5 — Side Buttons



- Locate the volume and camera buttons on the right side of the phone.
- Lift up on the buttons to slide them out of the phone.

To reassemble your device, follow these instructions in reverse order.