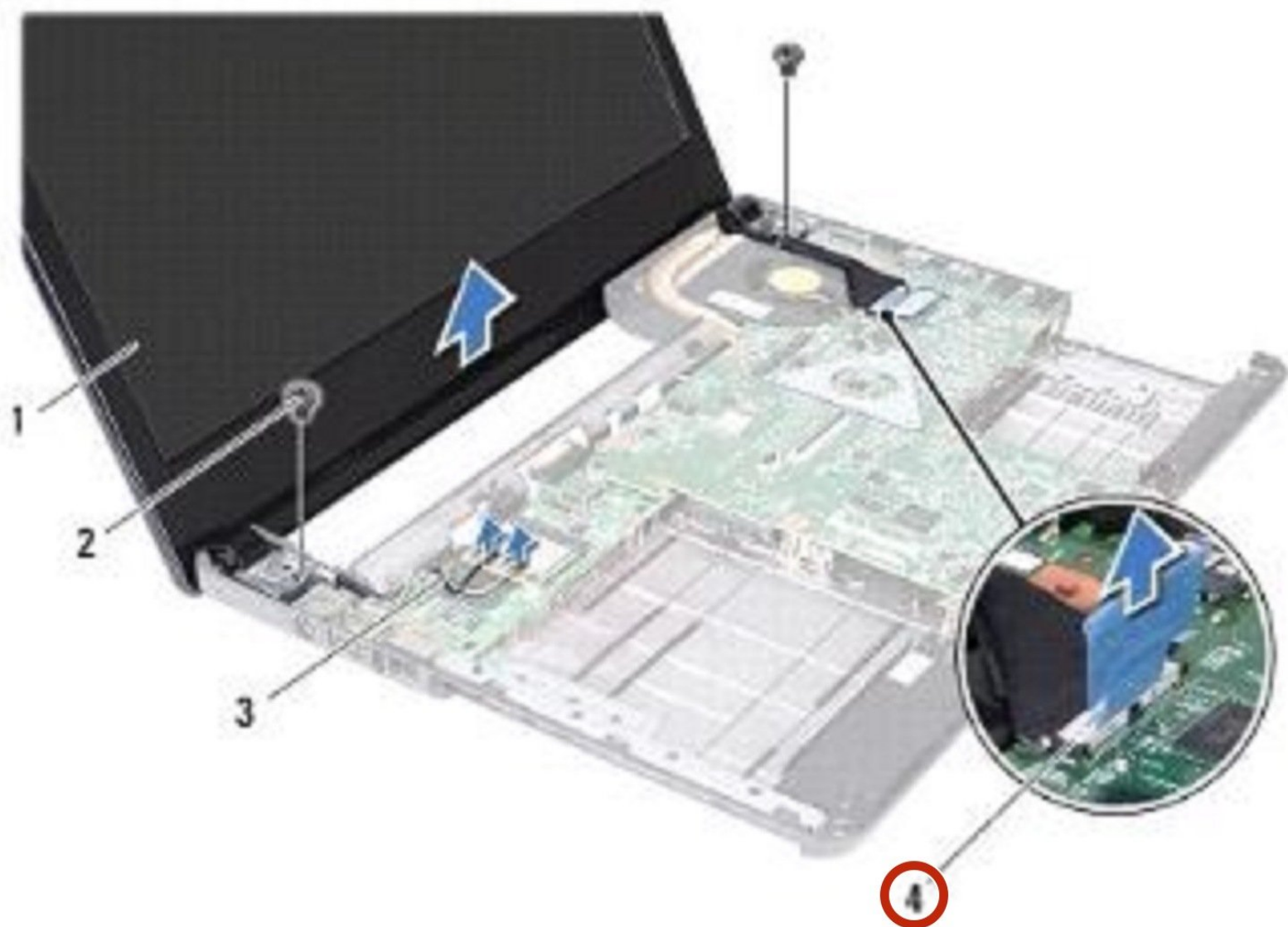




# Dell Inspiron 14 N4020 Display Assembly Replacement

Written By: Terrence15



---

## INTRODUCTION

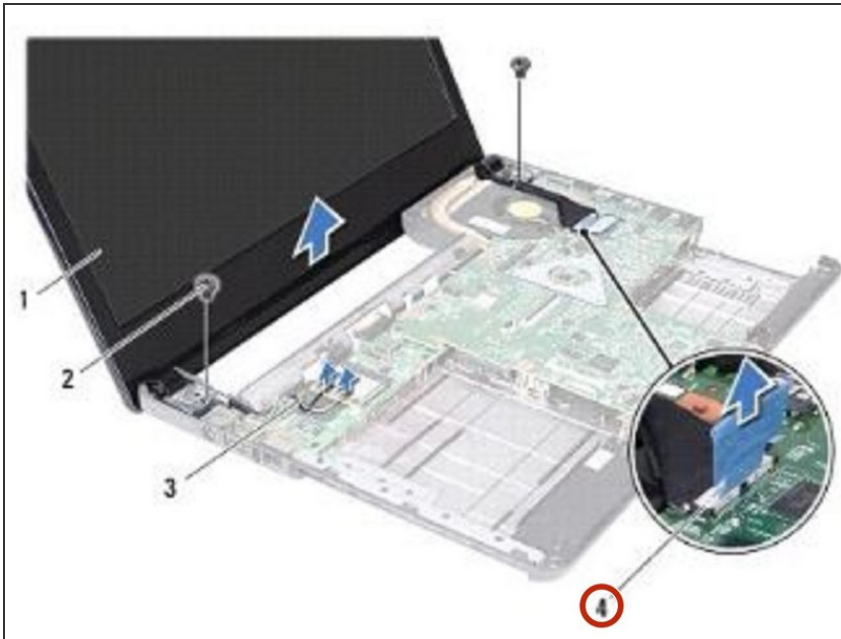
In this guide, we will show you how to remove and replace the Display Assembly.

---

### TOOLS:

- [Phillips #0 Screwdriver](#) (1)
-

## Step 1 — Disconnecting the Display Cable

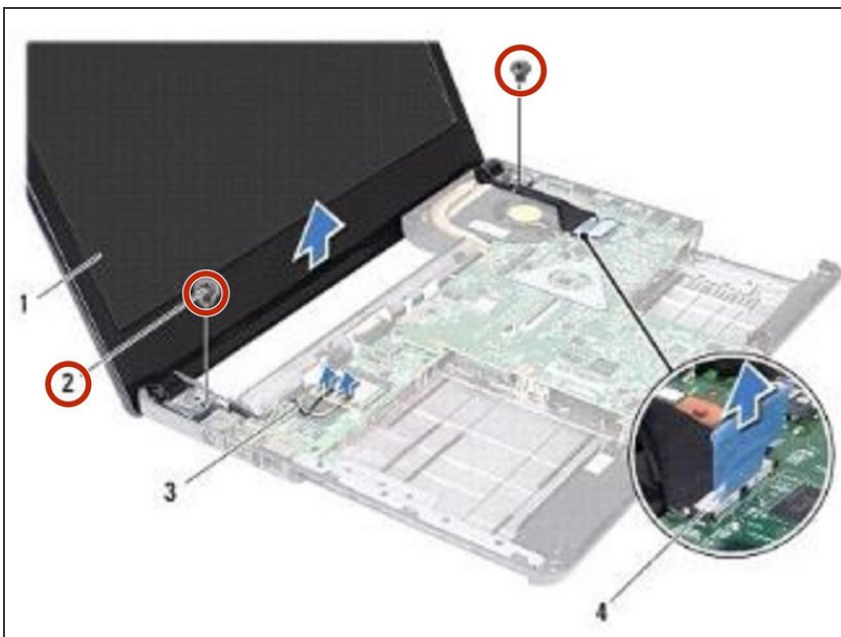


**⚠ WARNING:** Before working inside your computer, read the safety information that shipped with your computer. Follow the instructions in [Before You Begin](#).

**⚠ CAUTION:** To avoid electrostatic discharge, ground yourself by using a wrist grounding strap or by periodically touching an unpainted metal surface (such as a connector on your computer).

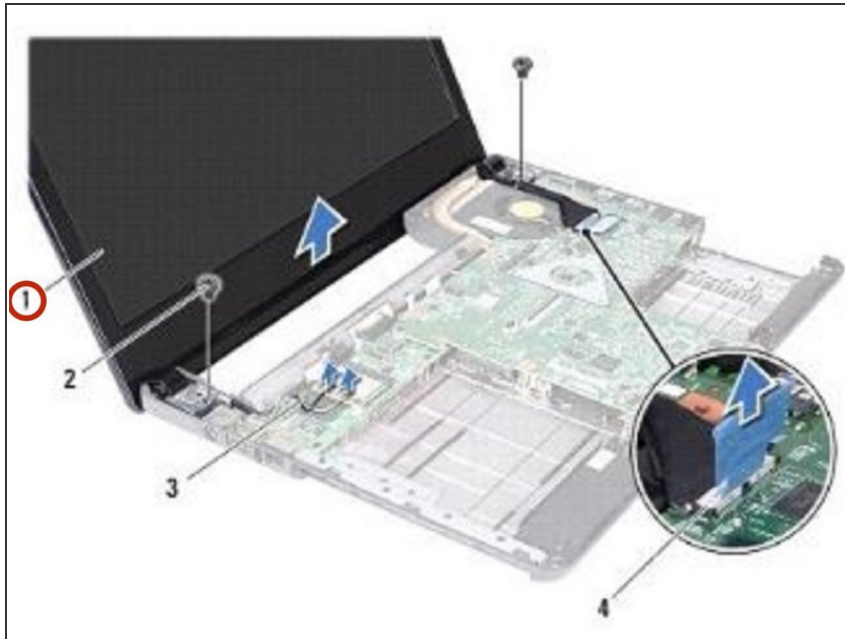
- Disconnect the display cable from the connector on the system board.

## Step 2 — Remove the Screws



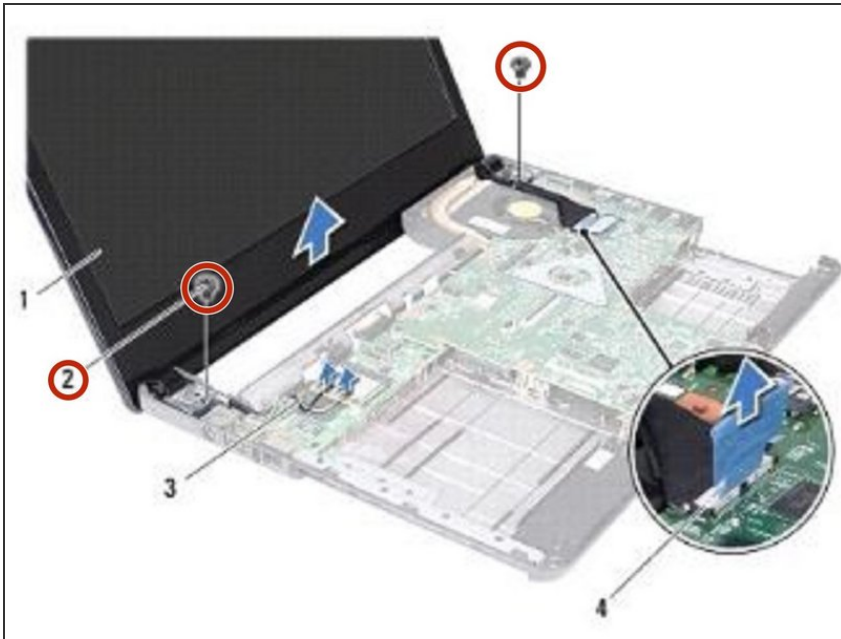
- Remove the two screws (one on each side) that secure the display assembly to the computer base.

### Step 3 — Removing the Display Assembly



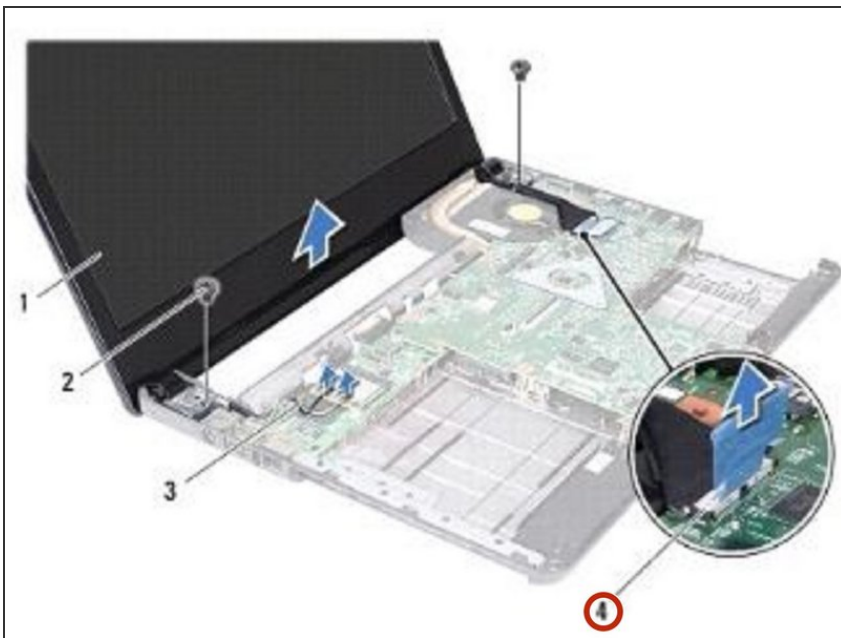
- Lift and remove the display assembly out of the computer base.

## Step 4 — Placing the Display Assembly



- Place the **NEW** display assembly in position and replace the two screws (one on each side) that secure the display assembly to the computer base.

## Step 5 — Connecting the Display Cable



- Connect the display cable to the connector on the system board.