



Dell Inspiron 14 N4050 Battery Replacement

Written By: Teren Wallace



INTRODUCTION

In this guide, we will be showing you how to remove and replace the Battery.

Step 1 — Turn off the Computer

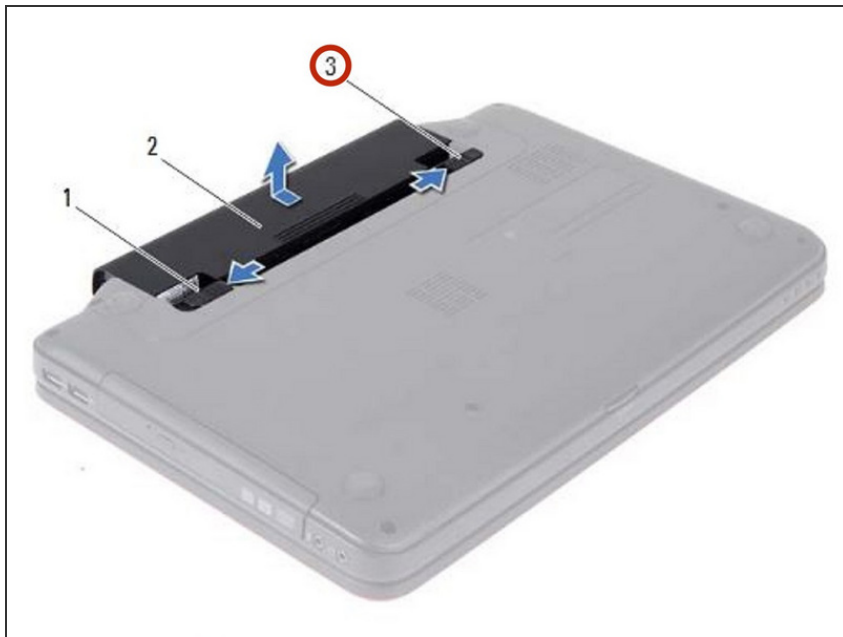


⚠ WARNING: Before working inside your computer, read the safety information that shipped with your computer. Follow the instructions in ["Before You Begin"](#).

⚠ CAUTION: To avoid electrostatic discharge, ground yourself by using a wrist grounding strap or by periodically touching an unpainted metal surface (such as a connector on your computer).

- Turn off the computer and turn it over.

Step 2 — Slide the Battery Latch



- Slide the battery lock latch to the unlock position until it clicks into place.

Step 3 — Sliding the Release Latch



- Slide and hold the battery release latch in the unlock position.

Step 4 — Lifting the Battery



- Slide and lift the battery out of the battery bay.

Step 5 — Sliding the New Battery



- Slide the **NEW** battery into the battery bay until it clicks into place.

Step 6 — Sliding the Lock Latch



- Slide the battery lock latch to the lock position.