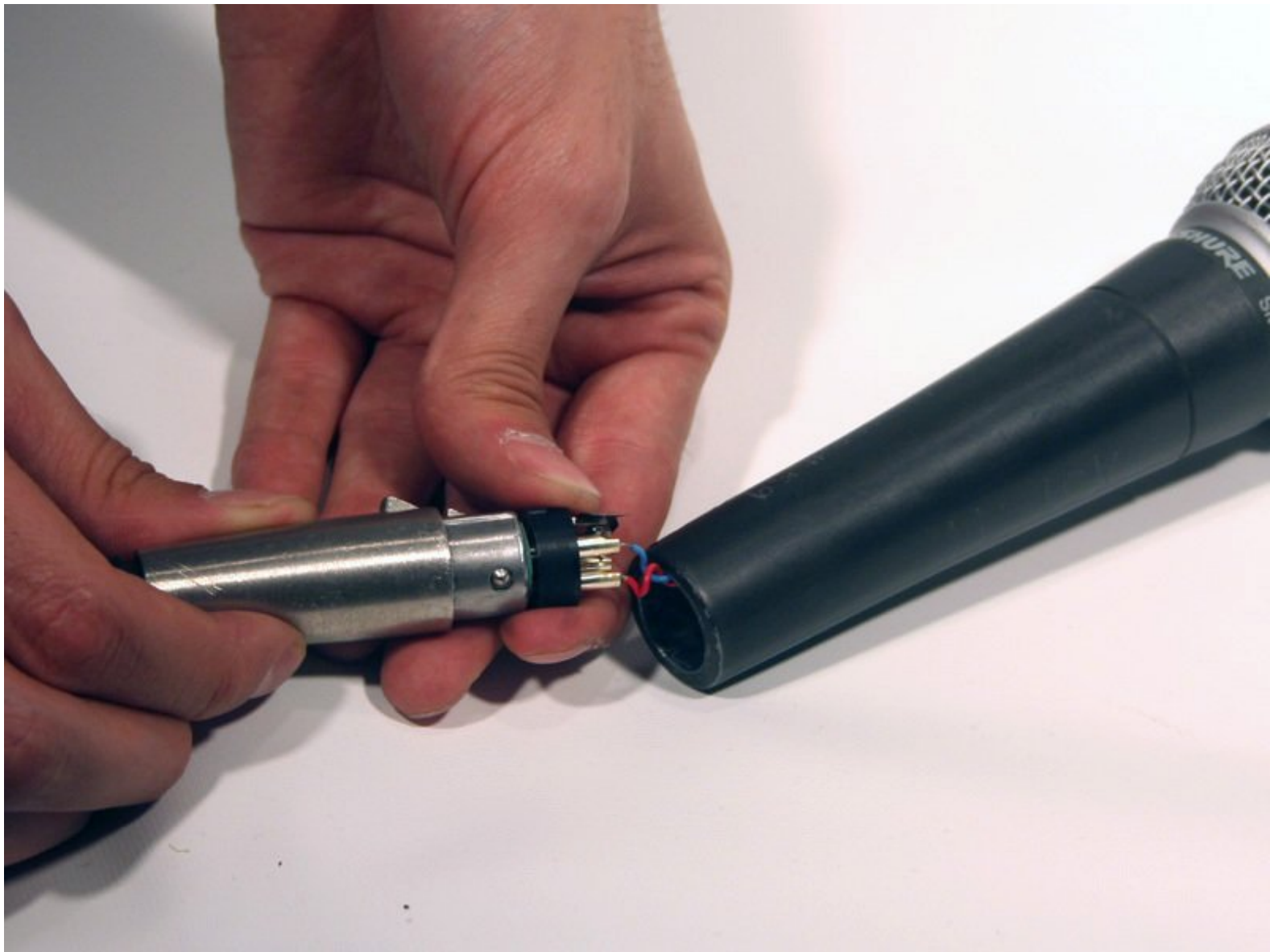




# Shure SM58 XLR Connector Replacement

This guide shows you how to reinstall the XLR connector inside the microphone if it is pulled out when trying to remove the cable from the microphone.

Written By: nat coll



---

## INTRODUCTION

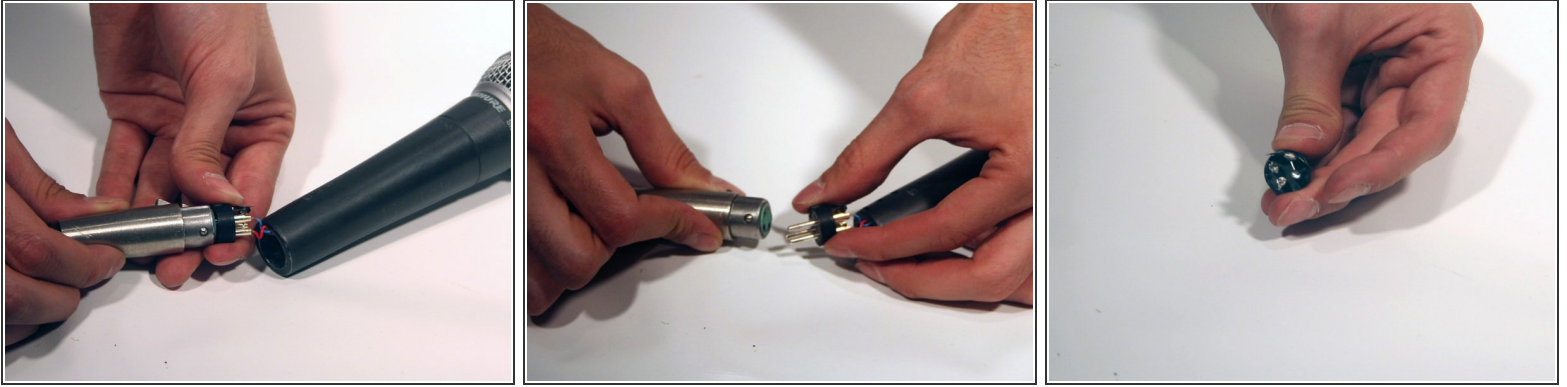
The XLR connector is the place where the XLR cable connects to the microphone. If the connector is pulled out, the internal wiring of the microphone can be damaged.

---

### TOOLS:

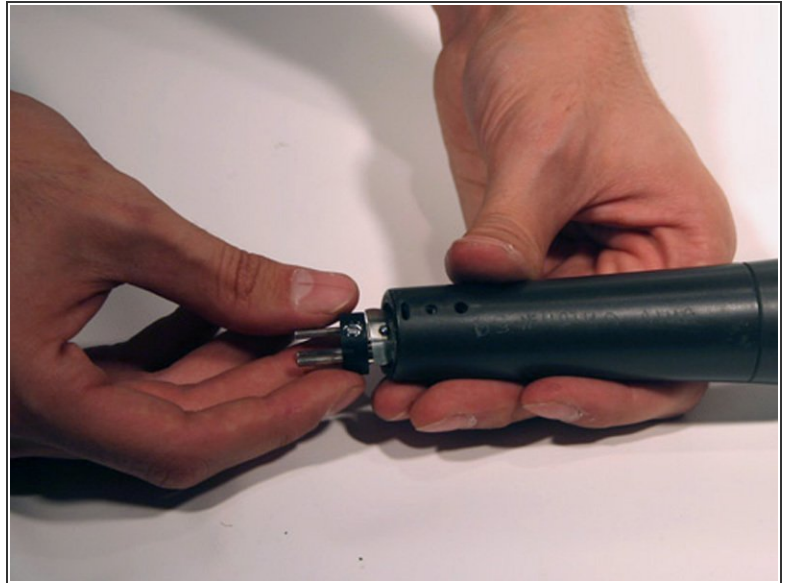
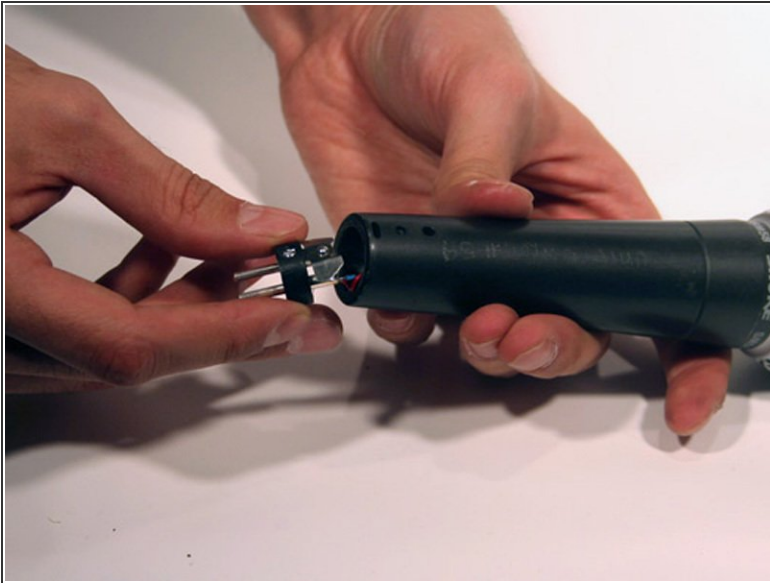
- [Flathead 3/32" or 2.5 mm Screwdriver](#) (1)
-

## Step 1 — Connector



- While holding the microphone connector in one hand, and the XLR cable in the other hand, slowly pull them apart.
- ⓘ Make sure you are not holding the microphone connector by the wires.
- Check to make sure all of the internal wires are connected. If you see a disconnected wire, take a look at the [connector soldering guide](#).

## Step 2




- Hold the microphone connector in one hand and the microphone base in the other.
- Line up the screw in the connector with the hole in the middle of the microphone.
- Also, align the ridge on the microphone connector (located near the top of the connector) with the slot in the base of the microphone.

### Step 3



- With those parts aligned, push the connector back into the microphone until the screw lines up with hole in the side of the microphone.

 Do not push the microphone past this point or the connector may become stuck.

### Step 4



- Using a small flat head screw driver, turn the screw in the side of the microphone clockwise until it is tight.

Following these steps should reinstall the XLR connector back into the microphone.