



How to Remove the Back Plate of a TI-NSpire

This guide will teach you how to remove the back plate of a TI-NSpire.

Written By: John Baek



INTRODUCTION

Removing the back plate will allow access to the inner circuitry of the calculator, which is necessary for other troubleshooting guides.

TOOLS:

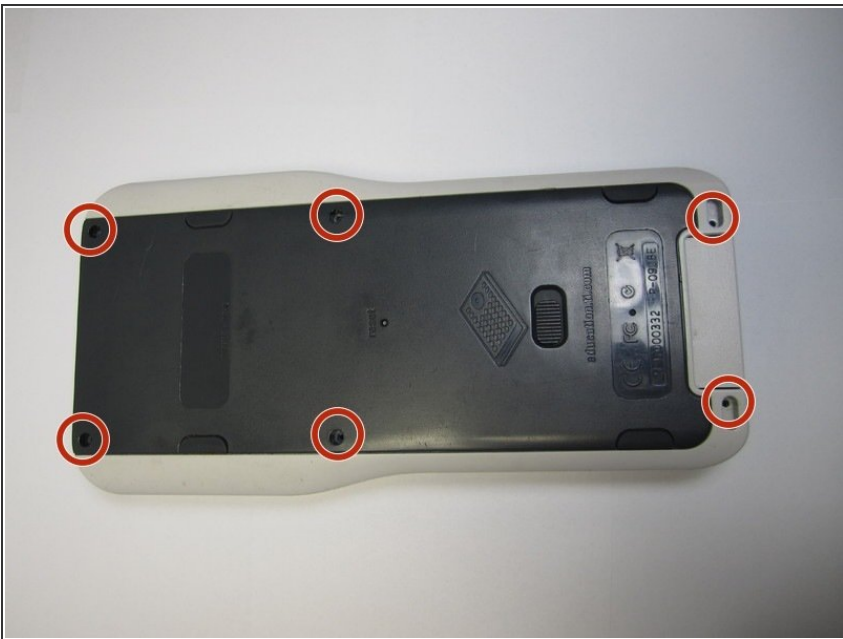
- [Phillips #000 Screwdriver](#) (1)
 - [iFixit Opening Tools](#) (1)
-

Step 1 — TI-Nspire Back Plate



- Place the calculator screen facing down with the back plate facing up.

Step 2



- With a #000 Philips screwdriver, remove the 6 x .286 inch screw drivers located at the top, middle, and bottom of the calculator.

Step 3



- Locate the latch toward the bottom of the calculator.

Step 4



- Slide the latch to the right to release the keypad.
- At the same time, pull the keypad down.

Step 5



- Locate and remove the screw near the bottom of the calculator on the front side.
- ⓘ The screw is behind where the keyboard normally sits.

Step 6



- Now, turn the calculator over so the back plate faces up.
- Use the Plastic Prying Tool to carefully pry the back plate out at the bottom right corner.
- ⓘ The prying order is arbitrary. The important part is for it to be sequential across the length of the calculator.
- Repeat the prying step on the right side, moving along the perimeter of the calculator.
- Repeat the prying step on the top right corner.

Step 7



- Use your hands to manually separate the now loosened back plate from the calculator.

To reassemble your device, carefully push the back plate back onto the calculator. Then replace the screws back into the back plate.

This document was last generated on 2019-07-22 07:47:10 PM.