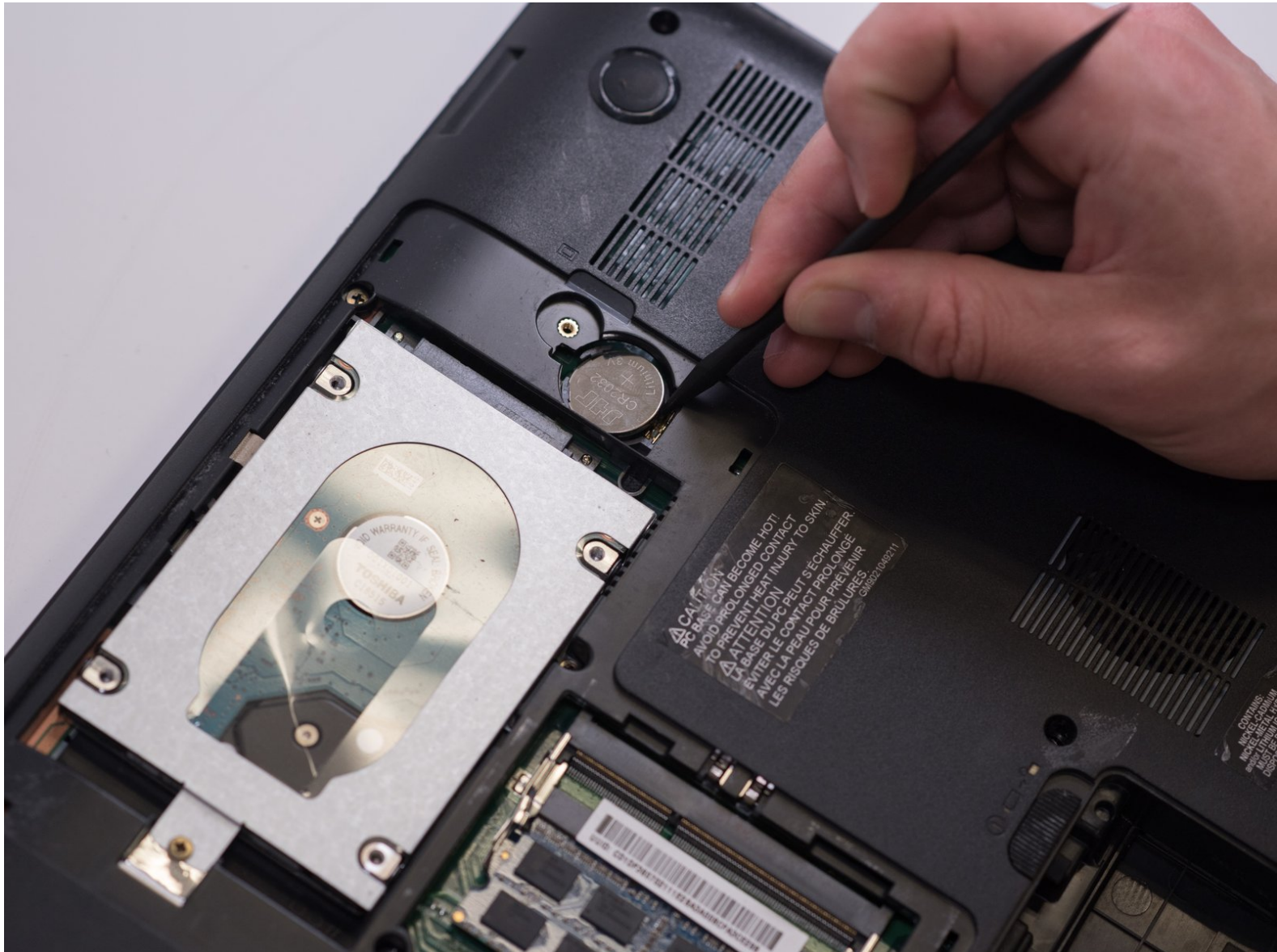




# Toshiba Satellite C855-S5115 CMOS Battery Replacement

This guide will show you how to remove the CMOS chip from your Toshiba laptop.

Written By: Claire Fletcher



---

## INTRODUCTION

You might need to replace your CMOS (Complementary Metal Oxide Semiconductor) battery if your Toshiba laptop is losing its time and date settings or if you are receiving a CMOS error message. You will also need to remove your CMOS before replacing other elements, such as the motherboard.

---

### TOOLS:

- [J1 Screwdriver Bit](#) (1)
  - [Spudger](#) (1)
  - [iFixit Opening Tools](#) (1)
-

## Step 1 — Battery



- Use two fingers to pull the ridged lock tabs on the bottom of the computer toward the edges. This will unlock the battery.

## Step 2



- Holding the left tab in place, use the groove located between the two tabs to pry the battery up and out.

### Step 3 — CMOS Battery



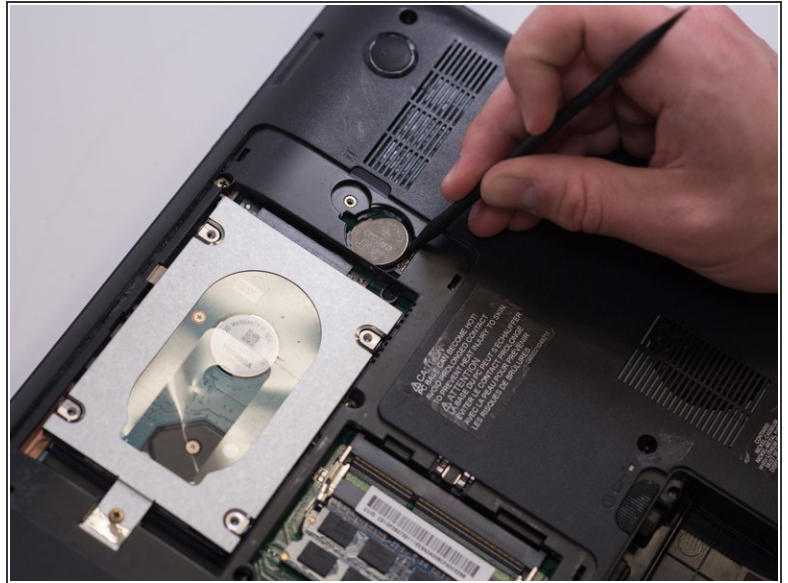
- Remove the 7mm screw from the back panel using the Phillips head screwdriver.

### Step 4



- Use the spudger to pry the back panel out of the laptop.

## Step 5



- Push the pin that holds the CMOS battery in place downwards. The battery will then come out.

To reassemble your device, follow these instructions in reverse order.