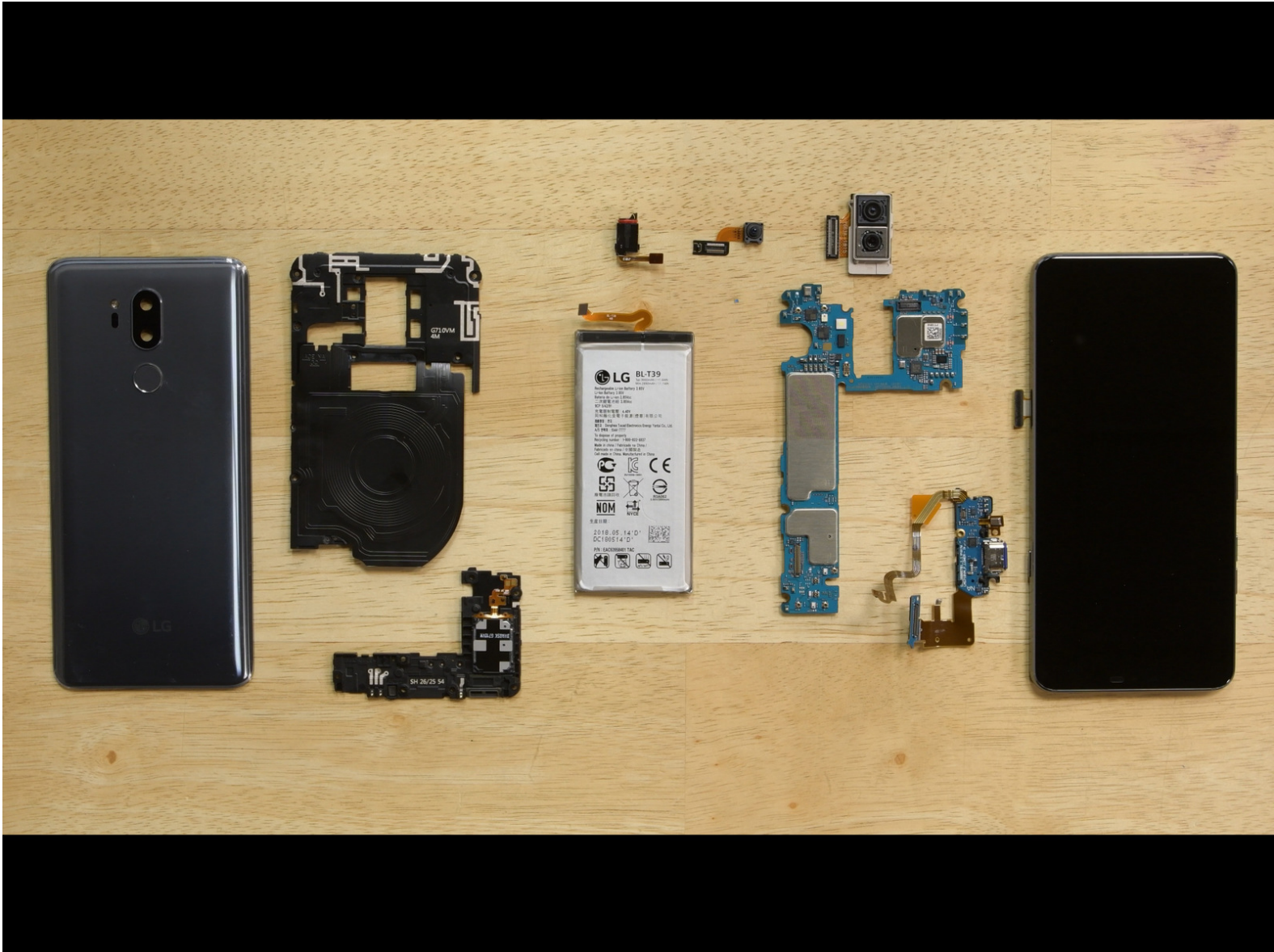




LG G7 ThinQ Teardown

We disassembled the LG G7 ThinQ on June 6, 2018

Written By: Michael Degnan



INTRODUCTION

The last LG phone we tore down was the very modular LG G5, which was super easy to take apart and scored an impressive 8 out of 10 on our repairability meter. But that was then—what have we now? Let's tear down the new LG G7 ThinQ.

TOOLS:

- [Phillips #00 Screwdriver](#) (1)
 - [iFixit Opening Picks set of 6](#) (1)
 - [Spudger](#) (1)
 - [iOpener](#) (1)
-

Step 1 — Final Thoughts

REPAIRABILITY SCORE:



- Lots of components are modular and can be replaced independently.
- The battery can be replaced, but adhesive and a glued-on rear panel make it unnecessarily difficult.
- Front and back glass make for double the crackability, and strong adhesive on both makes it tough to access the internals for any repair.
- Screen repair, the most common type repair, is not prioritized, requiring an almost complete disassembly while battling tough adhesive.

This document was last generated on 2018-08-08 03:47:31 PM.