



iPad 5 LTE SIM Tray Replacement

Remove or replace the SIM tray (including the SIM card) in an iPad 5 LTE.

Written By: Arthur Shi



INTRODUCTION

Learn how to eject and replace the SIM tray in your iPad 5 LTE.



TOOLS:

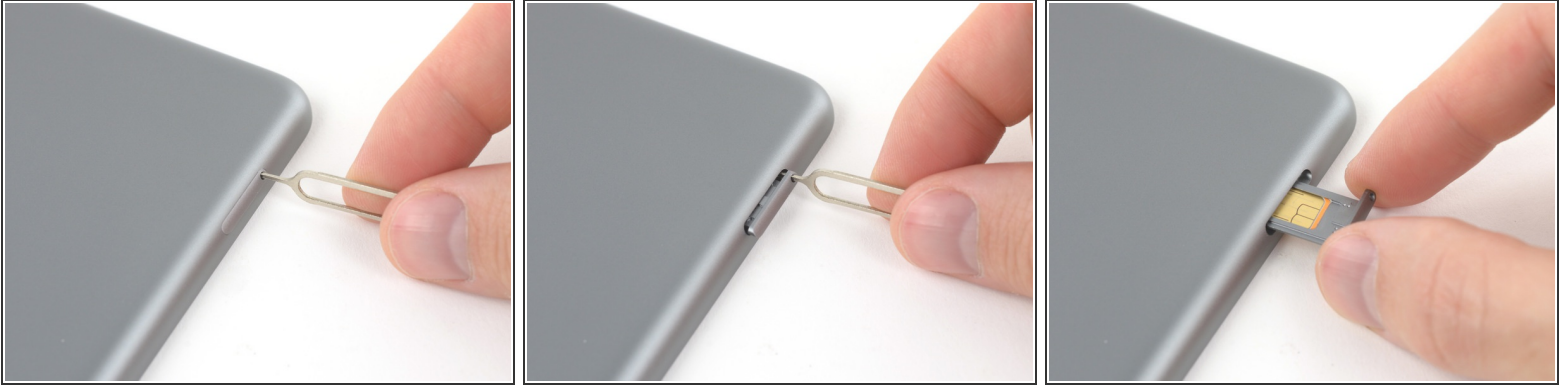
- [SIM Card Eject Tool](#) (1)



PARTS:

- [iPad Air SIM Card Tray](#) (1)
-

Step 1 — SIM Tray



- Use a SIM eject tool or an uncoiled paperclip to eject the SIM tray.
- Push the tool into the hole next to the SIM tray until it pushes the tray out enough to grab.
- Pull out and remove the tray.

To reassemble your device, follow these instructions in reverse order.

This document was last generated on 2018-06-09 09:30:16 AM.