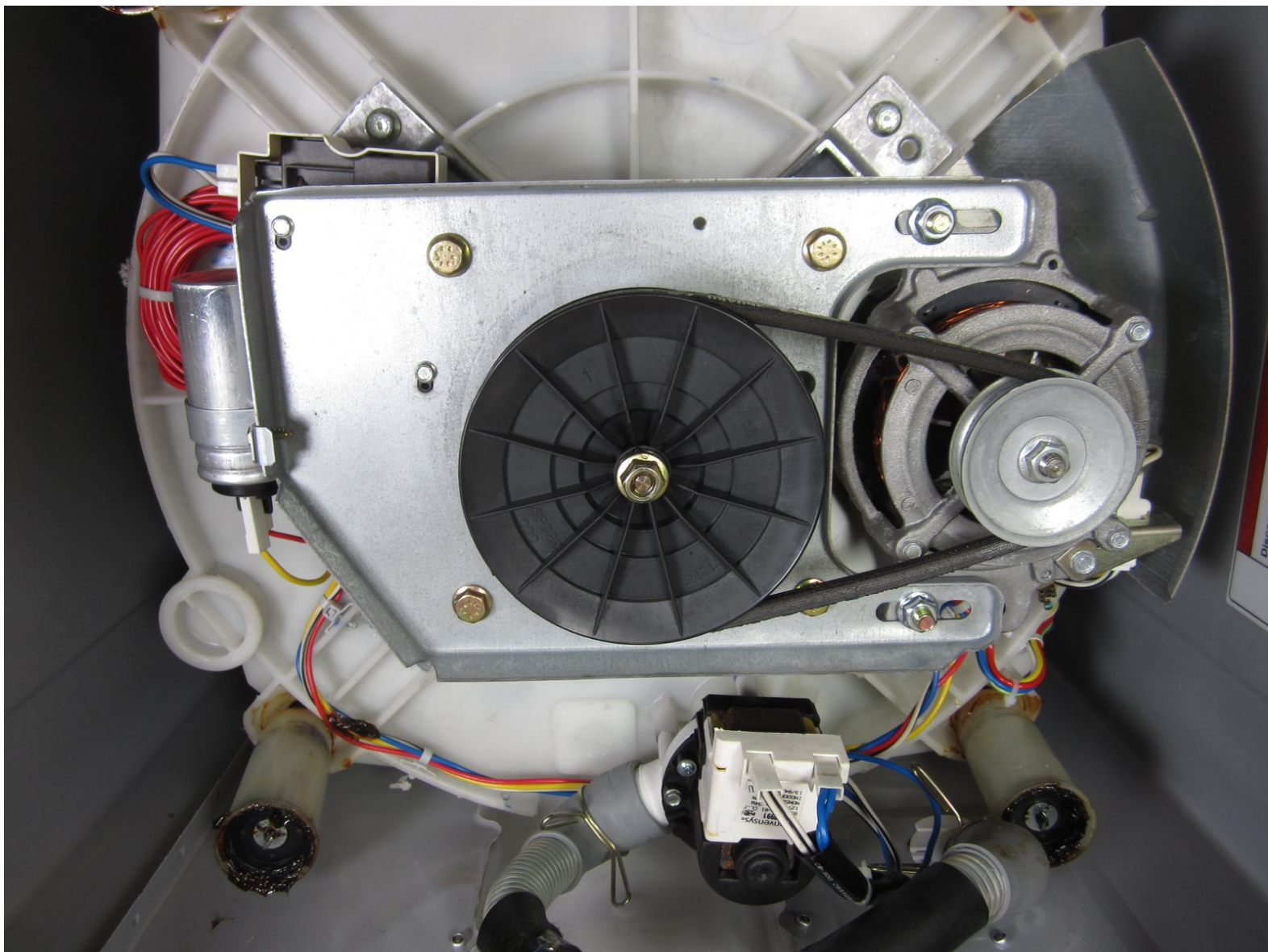




Kenmore 110 Series Washing Machine Drive Belt Replacement

Replace the drive belt in your Kenmore 110 Series Washing Machine.

Written By: Robert Trout



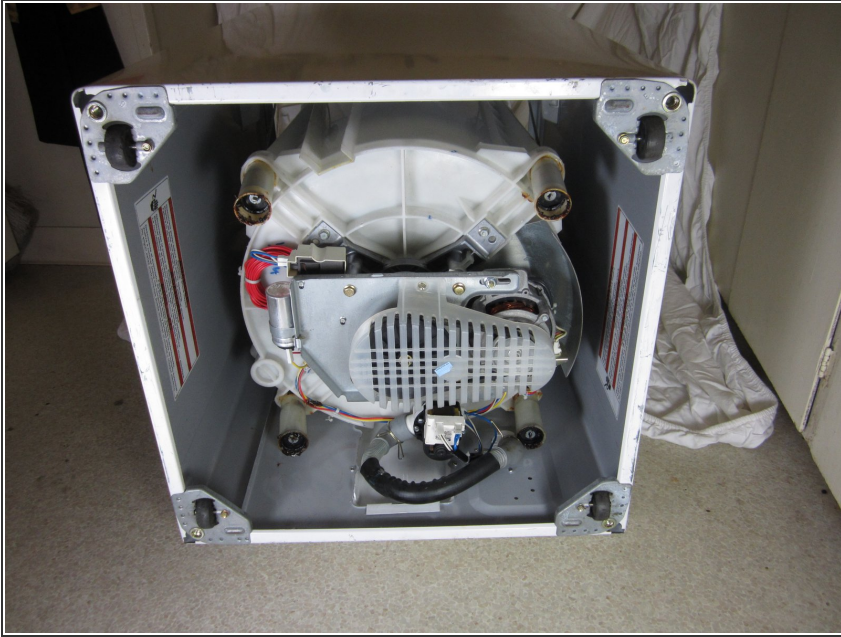
INTRODUCTION


Use this guide to replace a worn drive belt in a Kenmore 110 Series Washing Machine.

TOOLS:

- [5/16" Socket](#) (1)
 - [Socket Wrench](#) (1)
 - [1/2" Socket](#) (1)
-

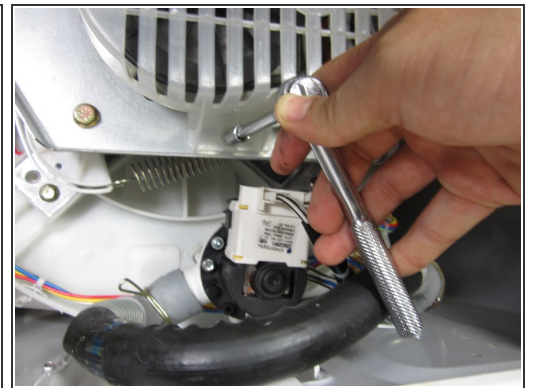
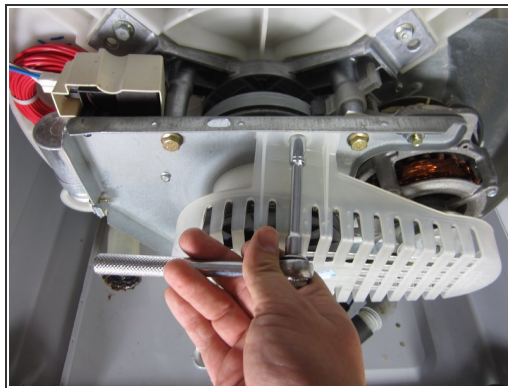
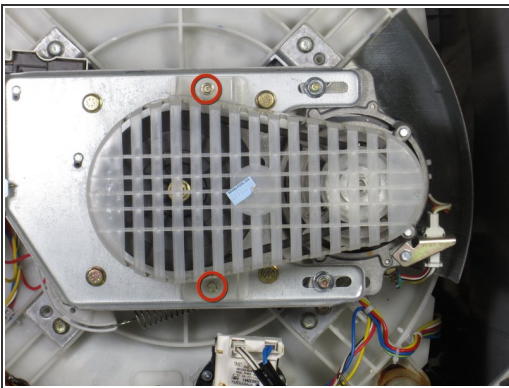
Step 1 — Drive Belt



 To avoid risk of electric shock, unplug the washing machine.

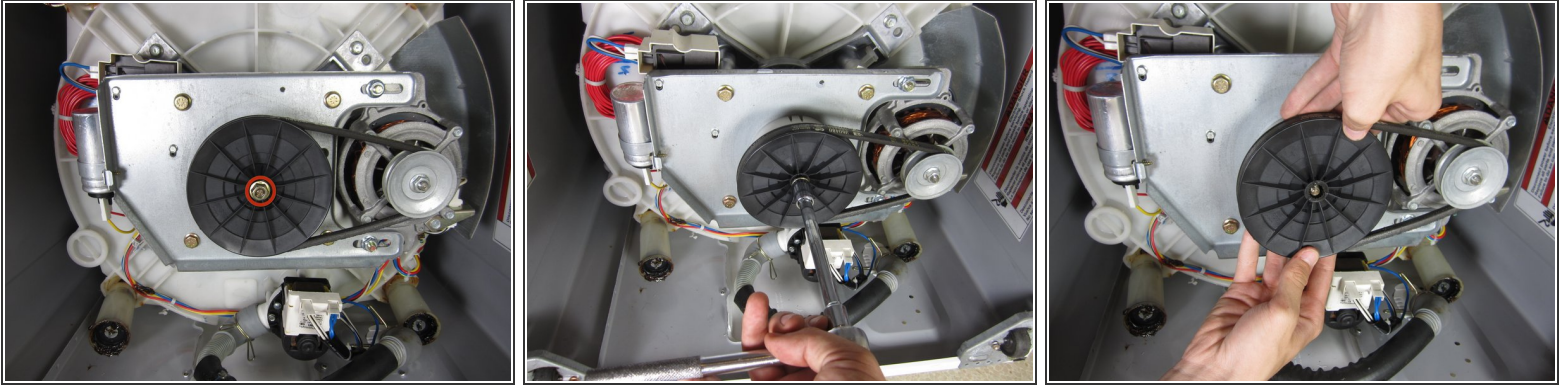
- Lay the washing machine on its back.

Step 2



- Using a 5/16" socket wrench, remove both screws from the belt cover.
- Remove the belt cover from the washer.

Step 3



- Using a 1/2" socket, remove the bolt securing the drive pulley.
- Remove the drive pulley and belt.
- ☑ When installing a new belt, wrap the belt around both the motor and drive pulleys before reinstalling the drive pulley.

To reassemble your device, follow these instructions in reverse order.