



# iPad Pro 9.7" Opening Display Assembly

Prerequisite only guide. Shows how to swing open the Display Assembly for the iPad Pro 9.7"

Written By: Arthur Shi



---

## INTRODUCTION

Prerequisite only guide. Shows how to swing open the Display Assembly for the iPad Pro 9.7"

---

### TOOLS:

- [iFixit Opening Picks set of 6](#) (1)
-

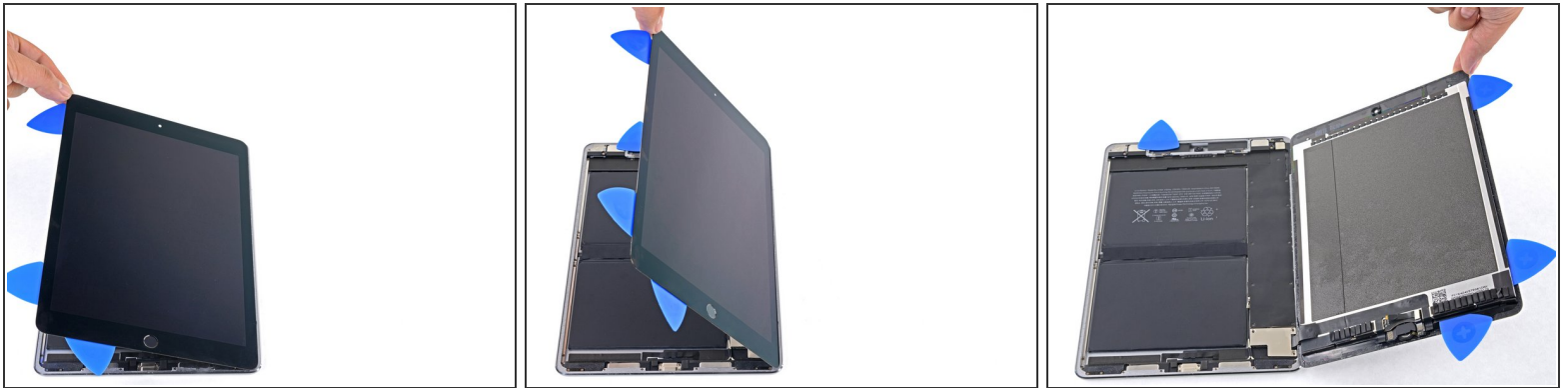
## Step 1 — iPad Pro 9.7" Opening Display Assembly



- Use picks to ensure most of the adhesive has been cut through on the top, left, and bottom sides.
- Twist the top and bottom picks to separate the display assembly from the rear case.

 Do not attempt to remove the display—it is still attached to the rear case.

## Step 2



- Swing the display assembly towards the right of the case, using the right edge as a hinge.
  - As you move the display assembly, make sure that the display ribbon cable is not being stressed.
- Continue swinging the display assembly until it lays flat next to the rear case.

To reassemble your device, follow these instructions in reverse order.