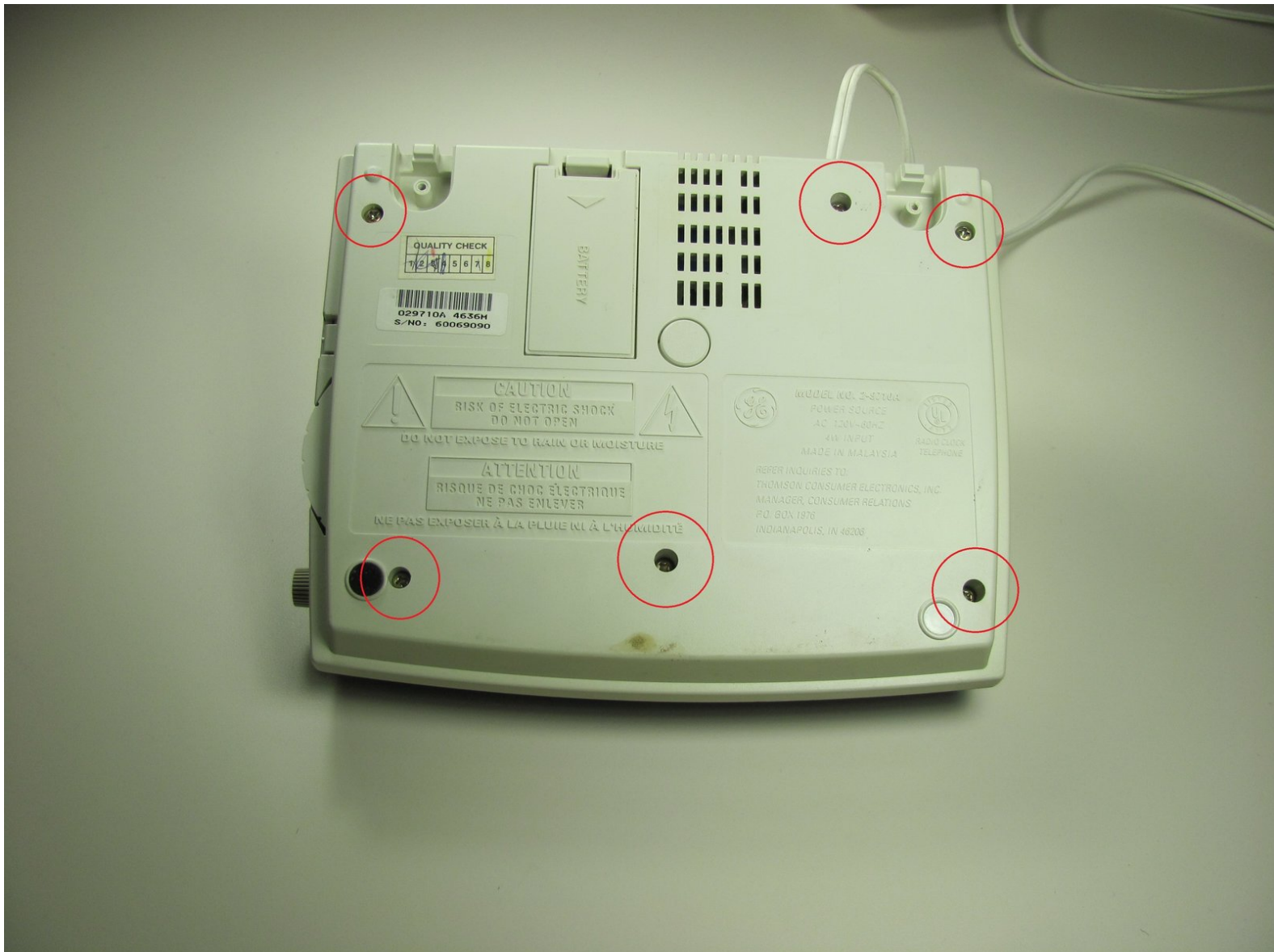




# Disassembling General Electric Telephone 2-9710A Base Shell

Removing the shell of the base to allow access to the logic board.

Written By: Alles Rebel



---

## INTRODUCTION

This is a guide to take part the shell of the base from the logic board. After completing this guide, you will have access to the logic board and all other interior parts of the telephone.


---

### TOOLS:

- [Phillips #1 Screwdriver](#) (1)
  - [iFixit Opening Tools](#) (1)
-

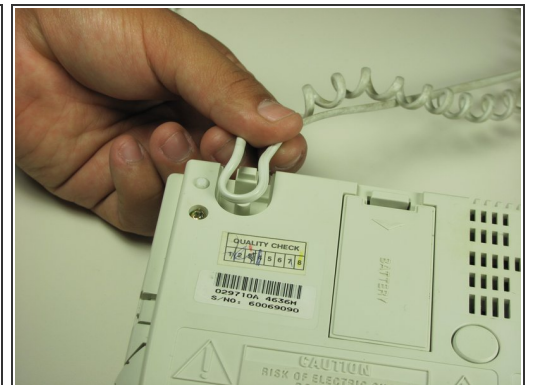
## Step 1 — Phone Cord



 Unplug the device before proceeding.

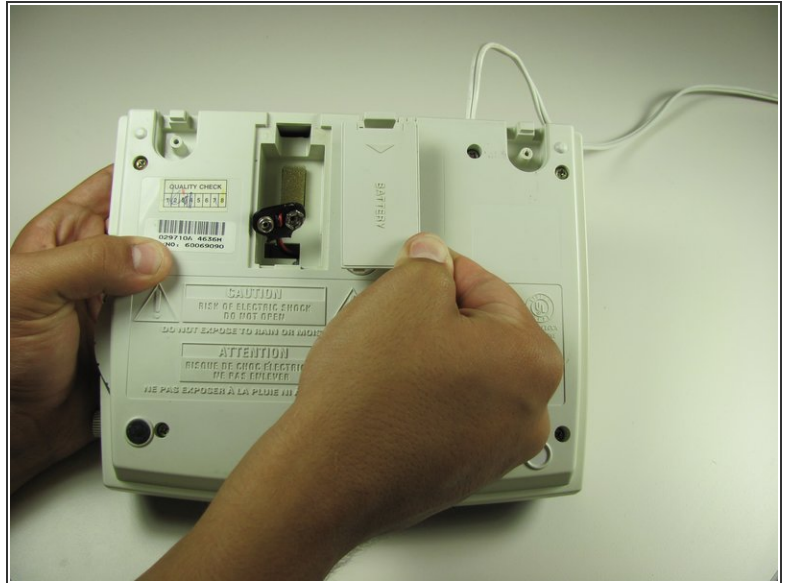
- Using a plastic opening tool, remove the phone cord from the phone jack from the base of the headset.

## Step 2



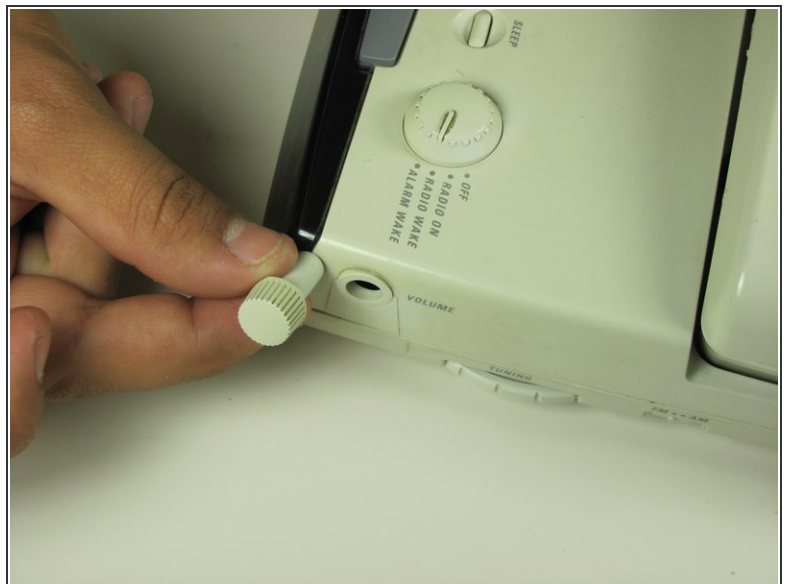
- Remove the phone cord screw cap.
  - Unscrew the 7.5mm screw.
- Remove the screw cap.
- Remove the cord from the phone base.

### Step 3 — 9V Base Battery



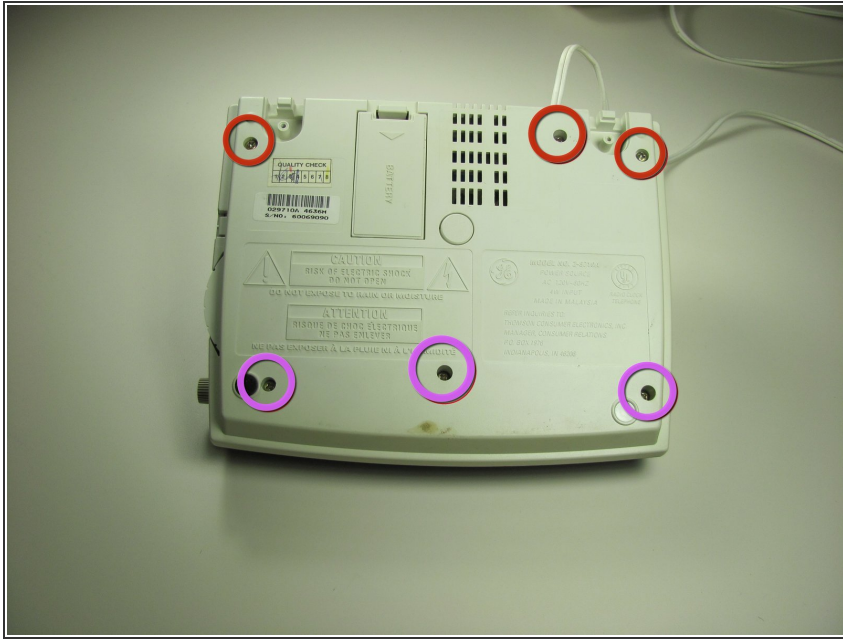
- Use finger to remove the battery cover.

### Step 4 — Base Shell



- Remove the Volume Dial by gently grasping the dial and pulling away from the base.

## Step 5



- Remove the 6 screws from the base shell.
- Remove the 3 12mm screws with the Philips head #1 screw driver.
- Remove the 3 18mm screws with the Philips head #1 screw driver.

## Step 6



- Pry off the base shell using a Plastic Opener Tool.

To reassemble your device, follow these instructions in reverse order.