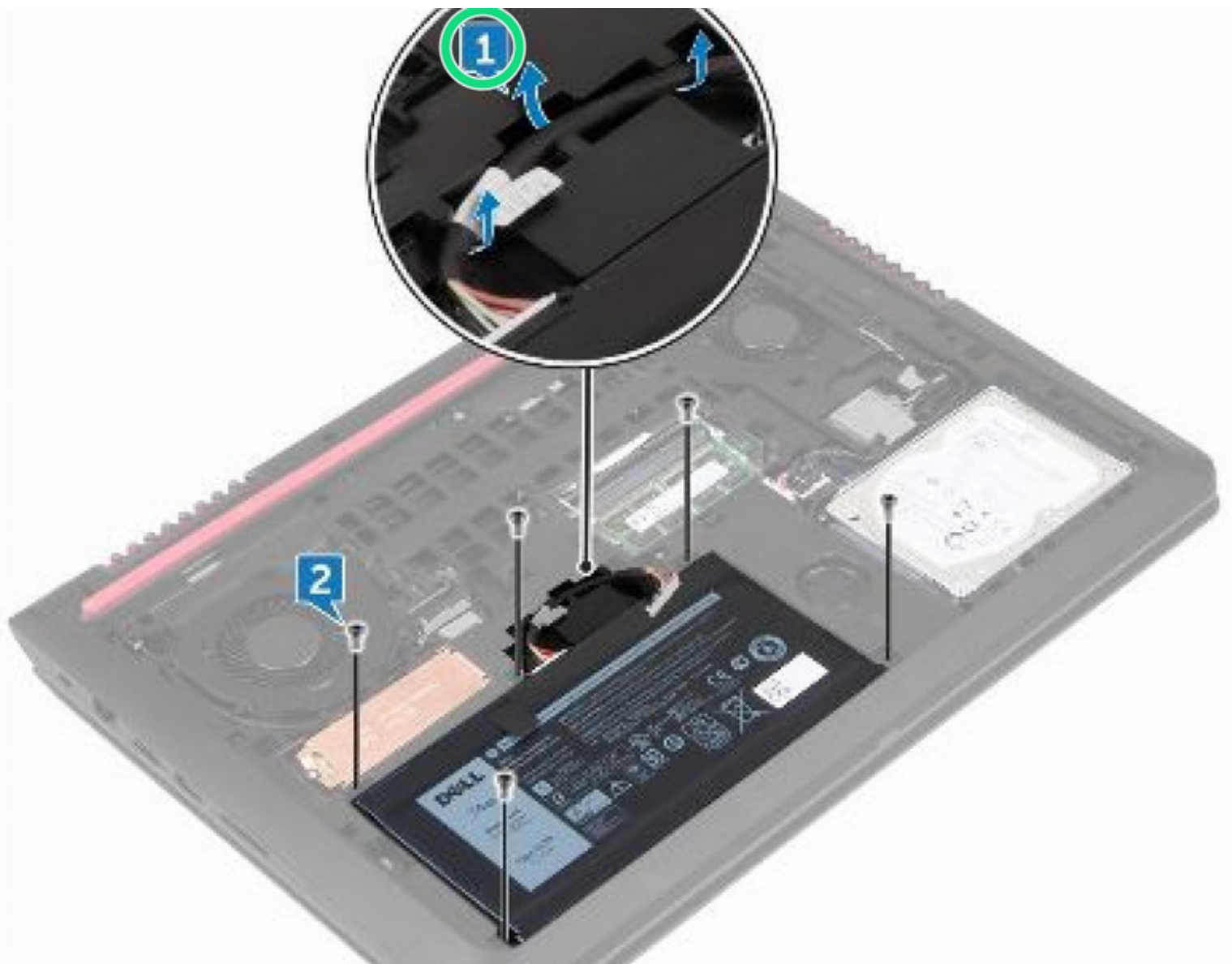




Dell Inspiron 15 5577 Gaming Battery Replacement

Written By: Teren Wallace



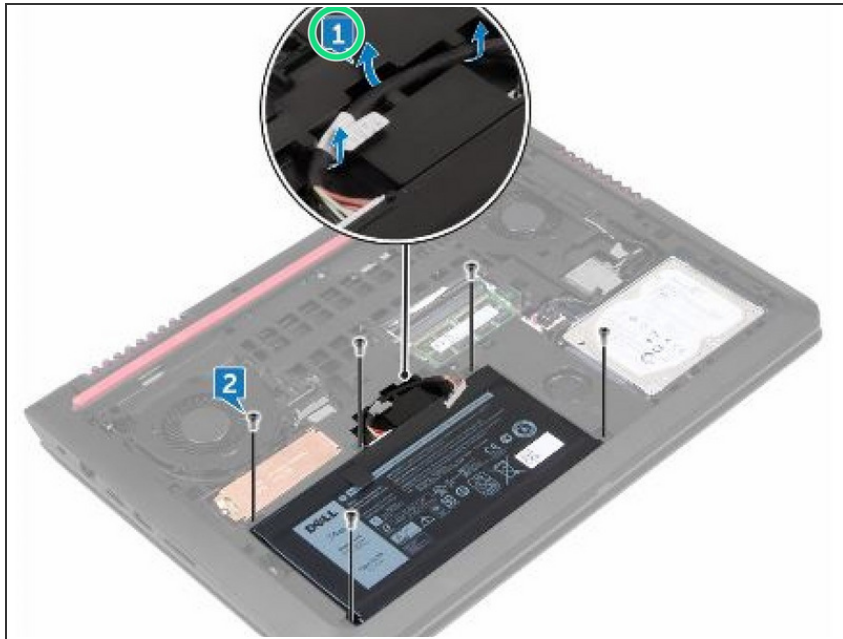
INTRODUCTION

In this guide, we will be showing you how to remove and replace the Battery.

TOOLS:

- [Phillips #0 Screwdriver](#) (1)
-

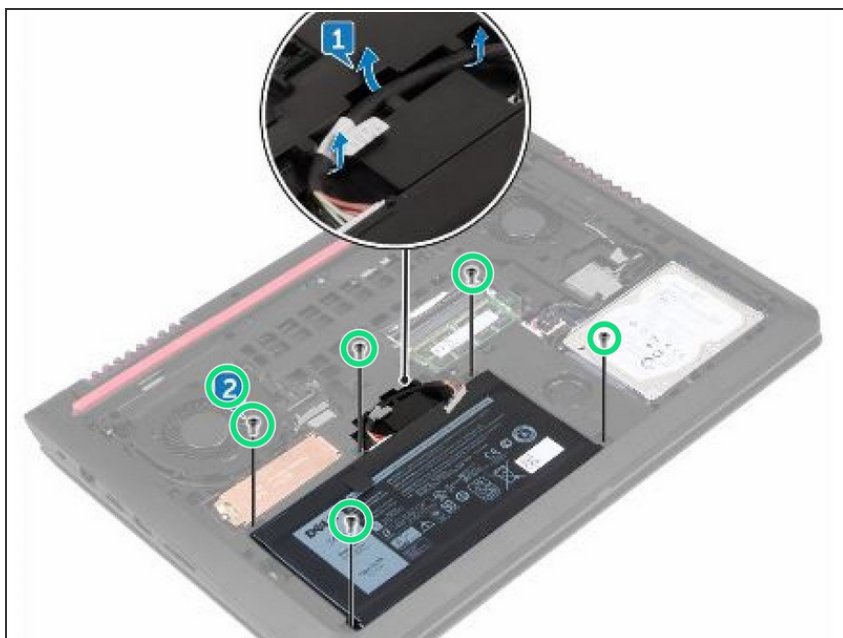
Step 1 — Remove the Battery Cable



⚠ WARNING: Before working inside your computer, read the safety information that shipped with your computer and follow the steps in [Before Working Inside Your Computer](#). After working inside your computer, follow the instructions in [After Working Inside Your Computer](#).

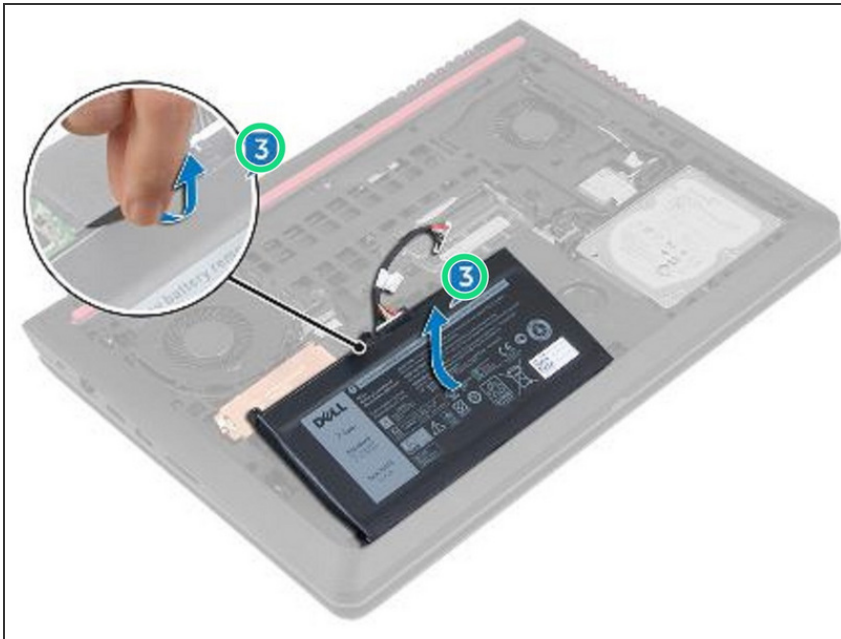
- Remove the battery cable from the routing guides on the computer base.

Step 2 — Remove the Screws



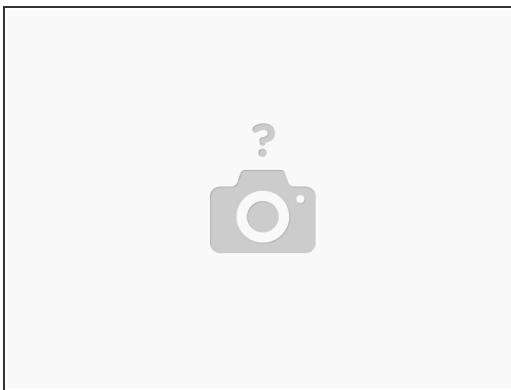
- Remove the five screws (M2x5 T8) that secure the battery to the computer base.

Step 3 — Lifting the Battery



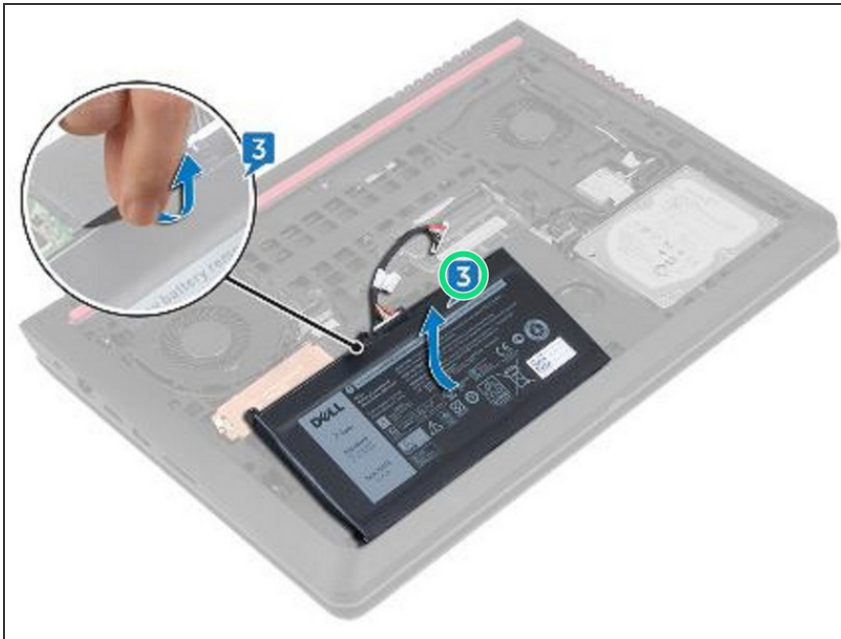
- Using the pull tab, lift the battery, along with its cable, off the computer base.

Step 4 — Grounding the System Board



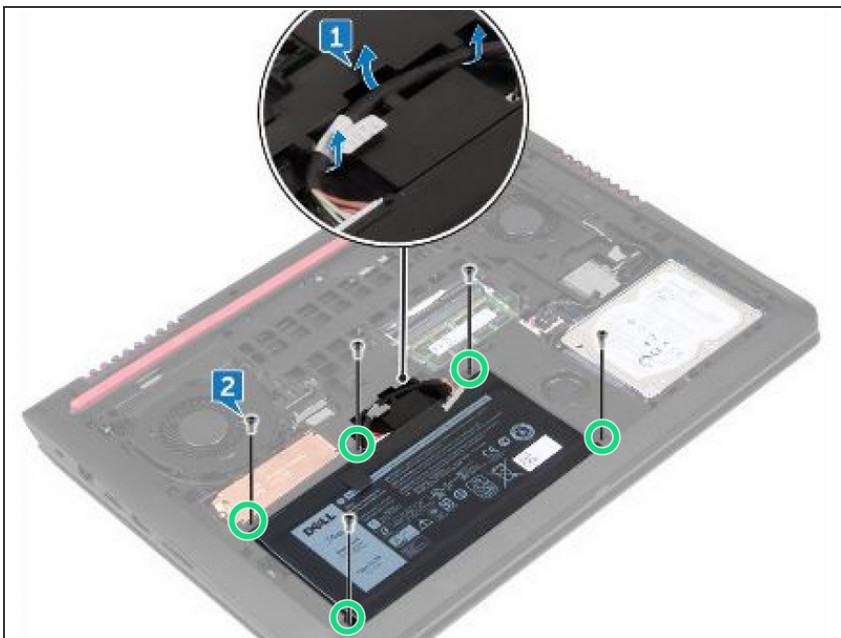
- Turn the computer over, open the display, and press and hold the power button for five seconds to ground the system board.

Step 5 — Sliding the Battery



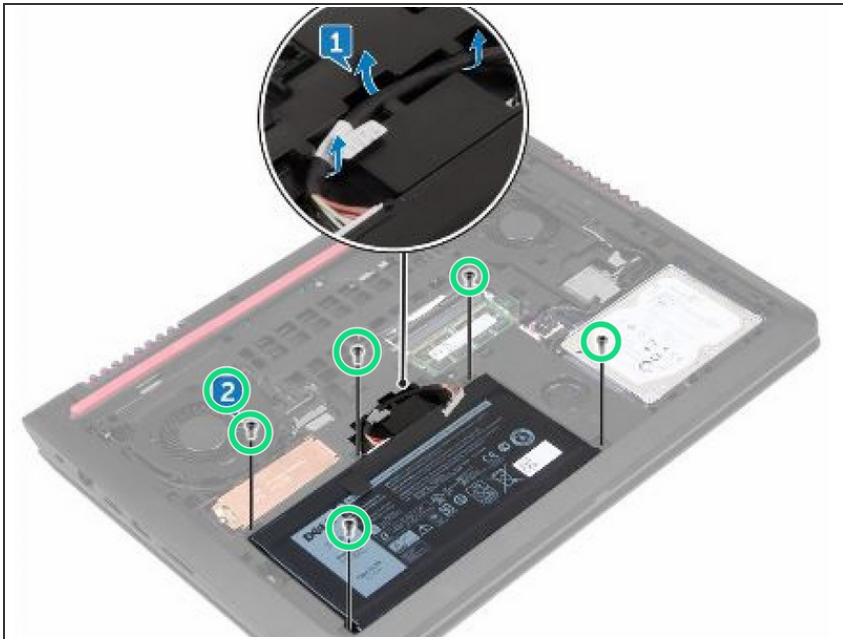
- Slide the **NEW** battery in the slot on the computer base.

Step 6 — Align the Screw Holes



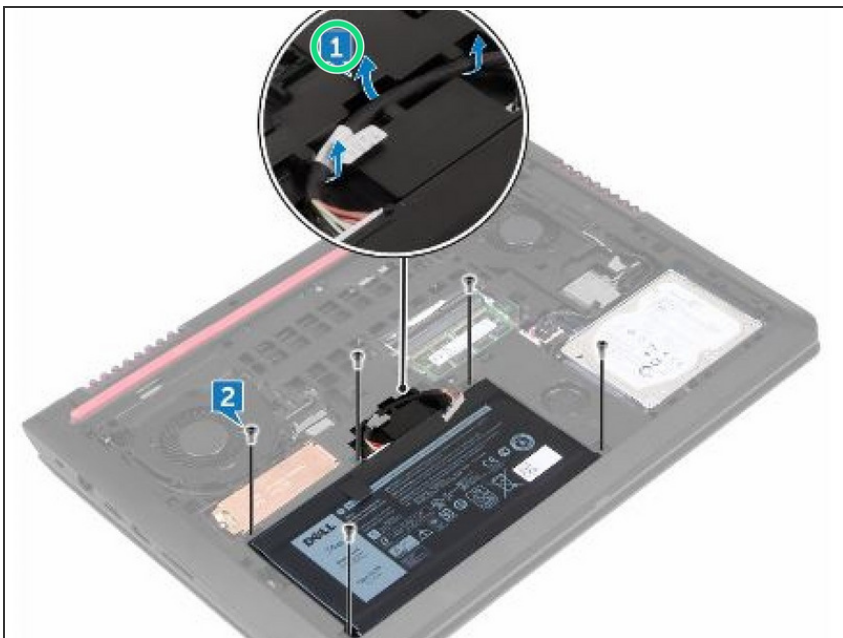
- Align the screw holes on the battery with the screw holes on the computer base.

Step 7 — Replace the Screws



- Replace the five screws (M2x5 T8) that secure the battery to the computer base.

Step 8 — Routing the Battery Cable



- Route the battery cable through the routing guides on the computer base.