



# Dell Inspiron 15 5579 2-in-1 Display Assembly Replacement

Written By: Terrence15



---

## INTRODUCTION

In this guide, we will be showing you how to remove and replace the Display Assembly.

---

### TOOLS:

- [Phillips #0 Screwdriver](#) (1)
-

## Step 1 — Turn the Computer Over

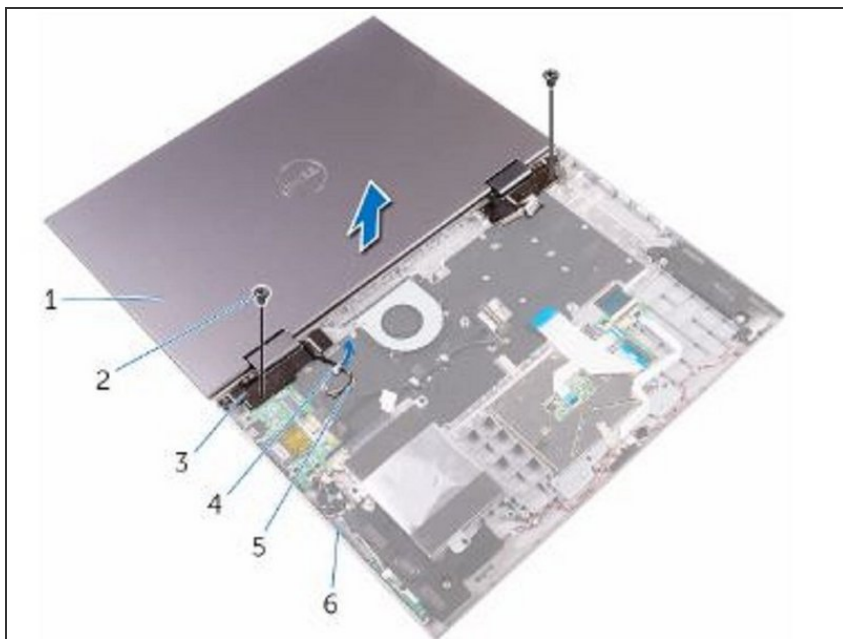


**⚠ WARNING:** Before working inside your computer, read the safety information that shipped with your computer and follow the steps in [Before Working Inside Your Computer](#). After working inside your computer, follow the instructions in [After Working Inside Your Computer](#).

- Turn the computer over and open the display to 180-degree angle.

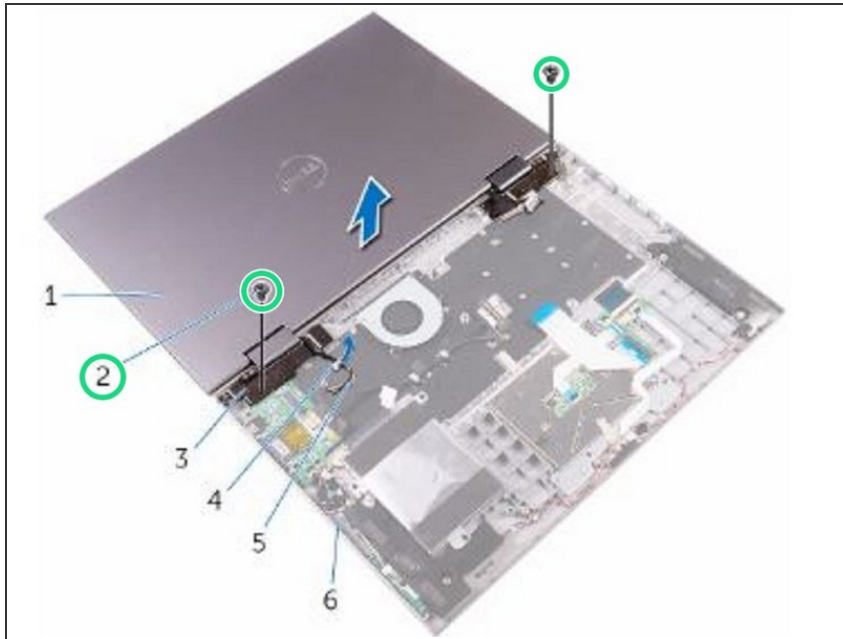
**⚠ CAUTION:** Place the computer on a soft and clean surface to avoid scratching the display.

## Step 2 — Placing the Computer



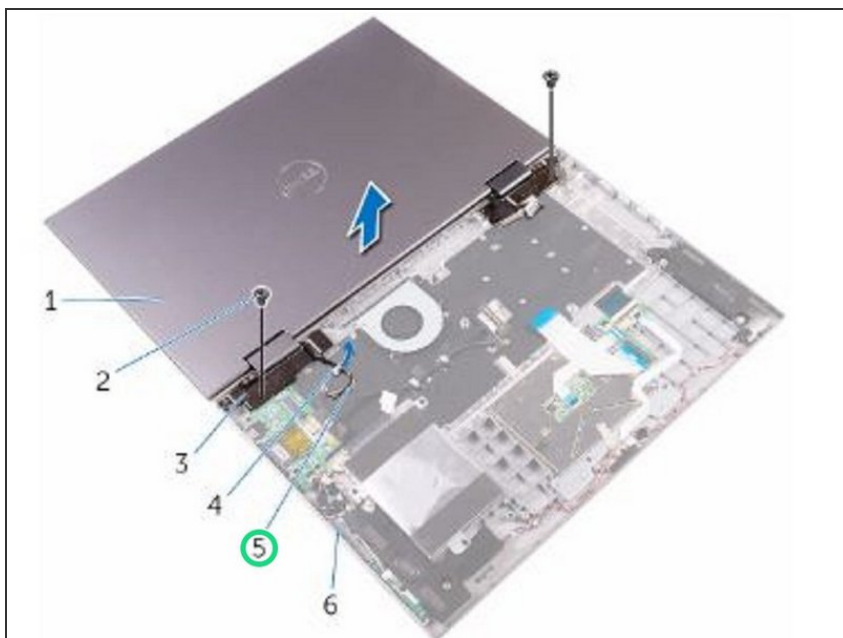
- Place the computer on a flat surface with the display facing down.

### Step 3 — Remove the Screws



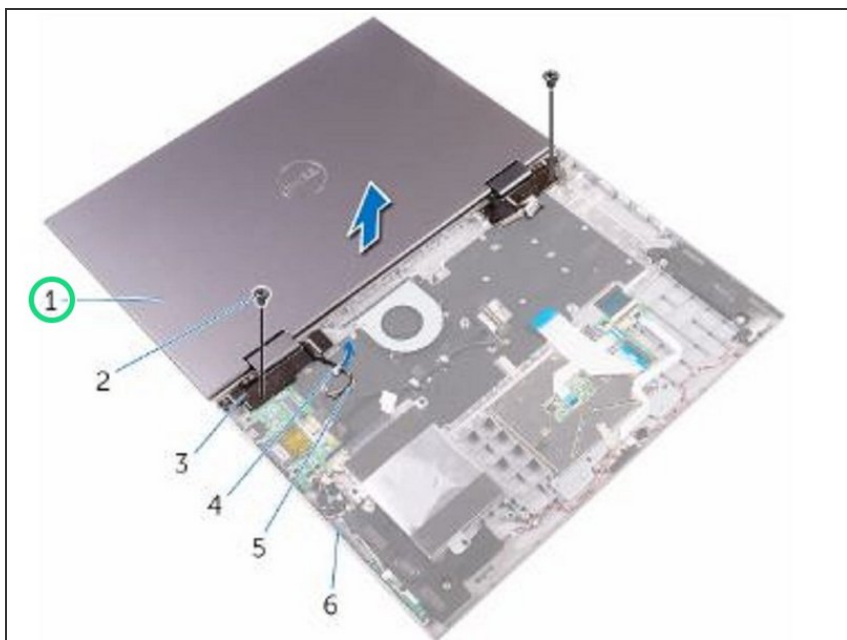
- Remove the two screws (M2.5x7) that secure the display assembly to the palm rest and keyboard assembly.

### Step 4 — Remove the Antenna Cables



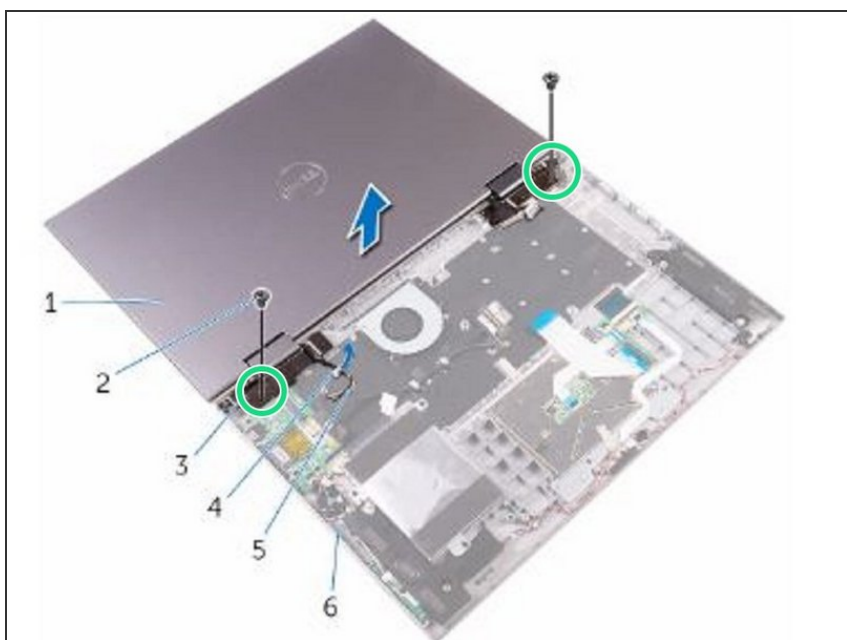
- Remove the antenna cables from the routing guide on the palm rest and keyboard assembly.

## Step 5 — Lifting the Display Assembly



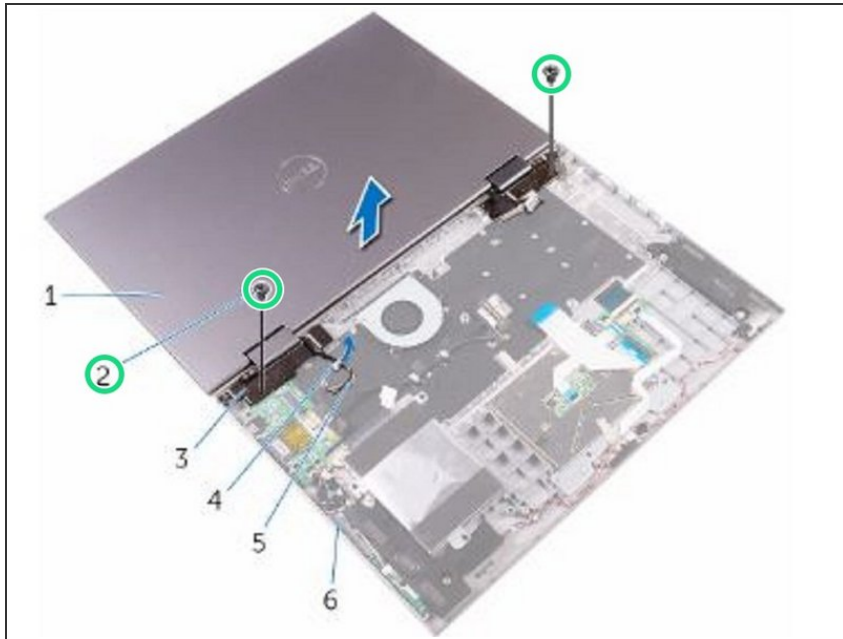
- Lift the display assembly off the palm rest and keyboard assembly.

## Step 6 — Align the Screw Holes



- ⚠ CAUTION: Place the computer on a soft and clean surface to avoid scratching the display.
- With the display facing down, align the screw holes on the display hinges with the screw holes on the palm rest and keyboard assembly.

## Step 7 — Replace the Screws



- Replace the two screws (M2.5x7) that secure the display assembly to the palm rest and keyboard assembly.

## Step 8 — Turn the Computer Over



- Turn the computer over and close the display.