



Sony Ericsson J220i Battery Replacement

This guide will show the user how to disassemble a Sony Ericsson J220i with the intent of removing and replacing the battery.

Written By: Aaron Comis



INTRODUCTION

Once the back cover is taken off, the battery can be removed with relative ease.

Step 1 — Battery



⚠ Before disassembling the phone, make sure the phone is powered off.

Step 2



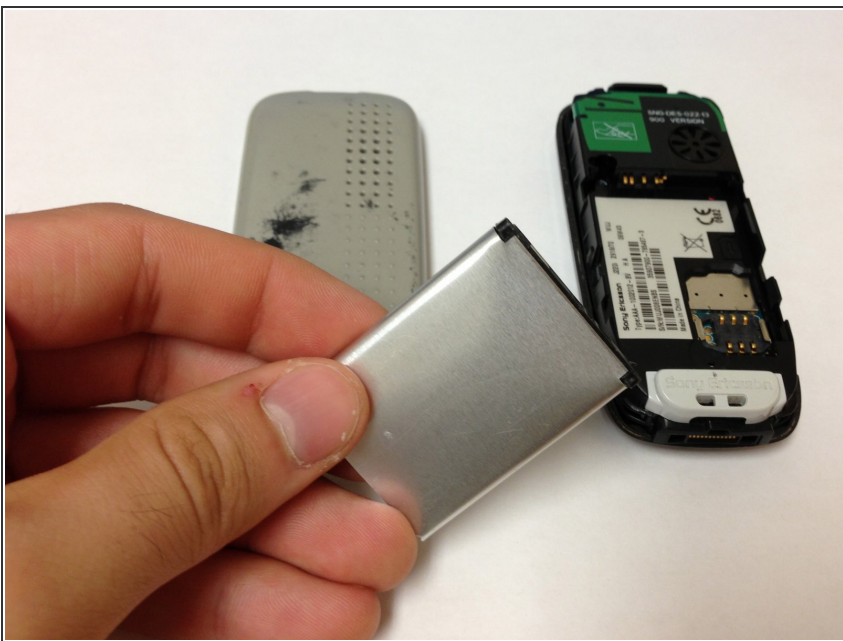
- Flip to the back of the phone and locate the black button on the top of the phone.

Step 3



- Firmly hold down the black button on the top of the phone and gently snap off the back cover.

Step 4



- Remove the battery by wedging it out from the back.

To reassemble your device, follow these instructions in reverse order.