



Dell Inspiron 15 7579 2-in-1 Display Assembly Replacement

Written By: Teren Wallace



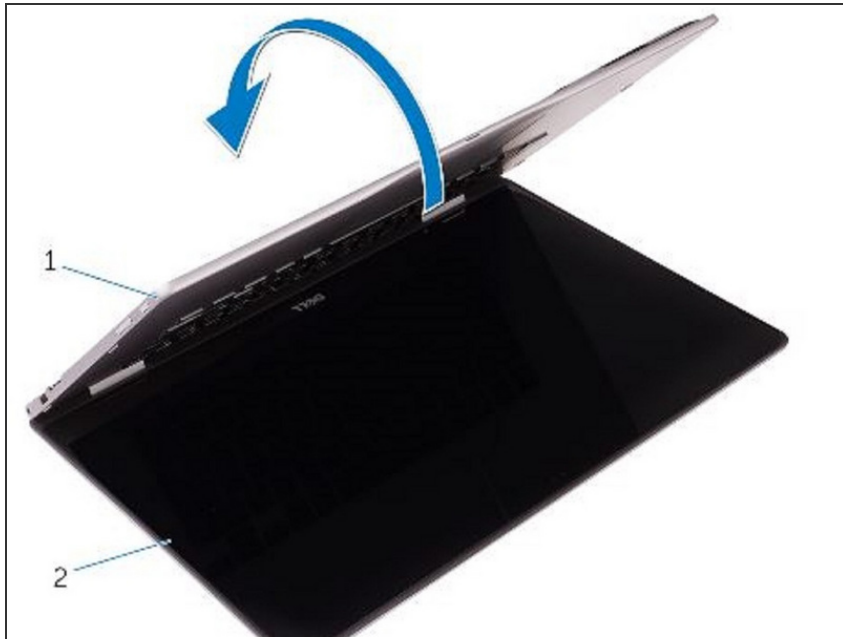
INTRODUCTION

In this guide, we will be showing you how to remove and replace the Display Assembly.

TOOLS:

- [Phillips #0 Screwdriver](#) (1)
-

Step 1 — Turn the Computer Over

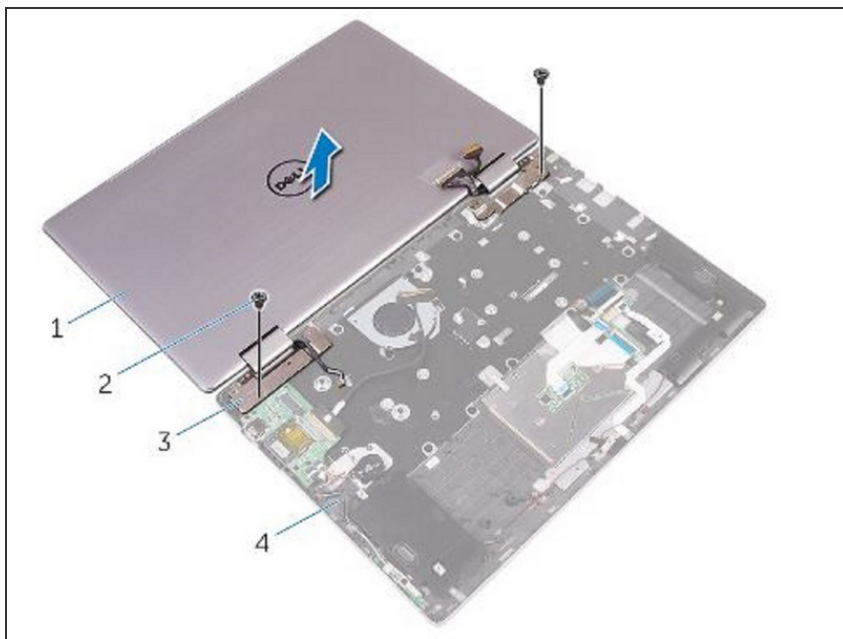


⚠ WARNING: Before working inside your computer, read the safety information that shipped with your computer and follow the steps in [Before Working Inside Your Computer](#). After working inside your computer, follow the instructions in [After Working Inside Your Computer](#).

- Turn the computer over and open the display to 180-degree angle.

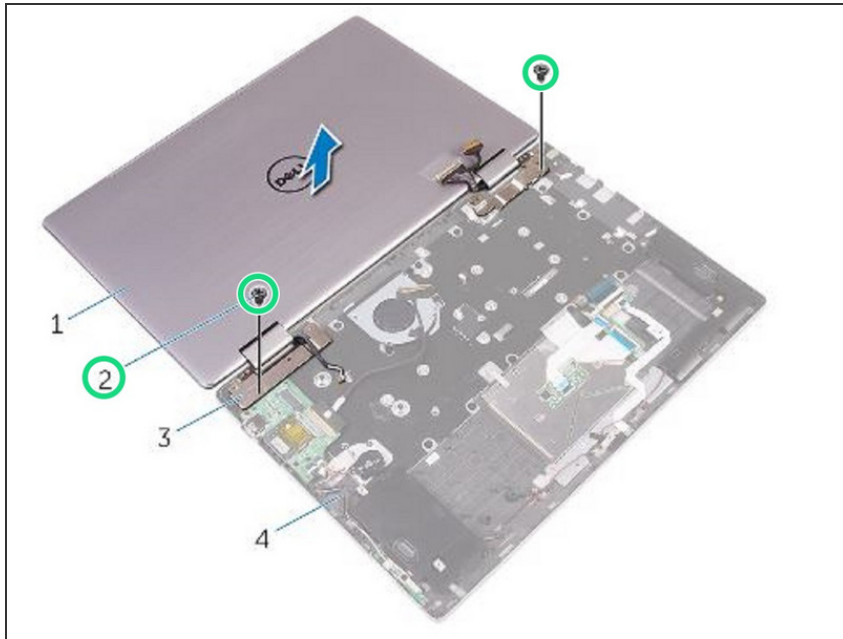
⚠ CAUTION: Place the computer on a soft and clean surface to avoid scratching the display.

Step 2 — Place the Computer



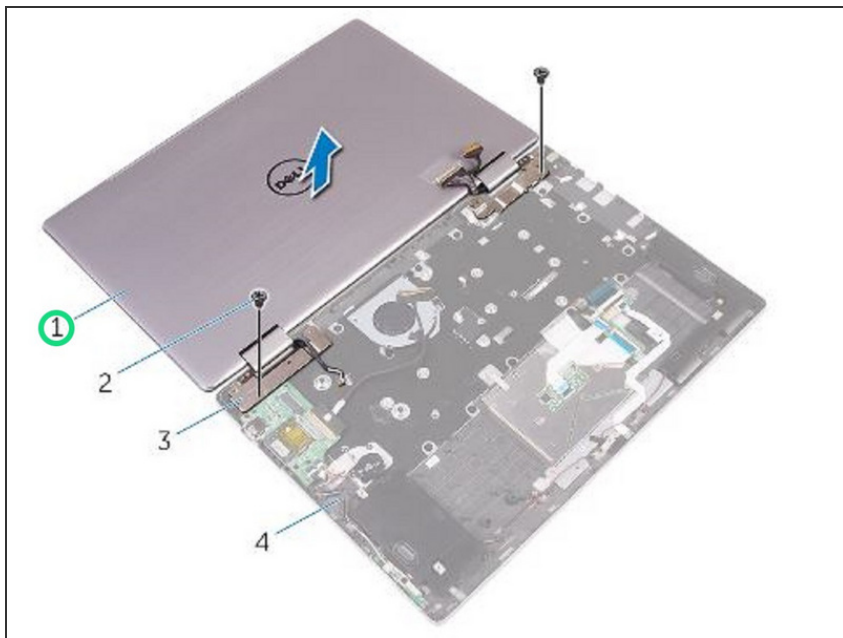
- Place the computer on a flat surface with the display facing down.

Step 3 — Remove the Screws



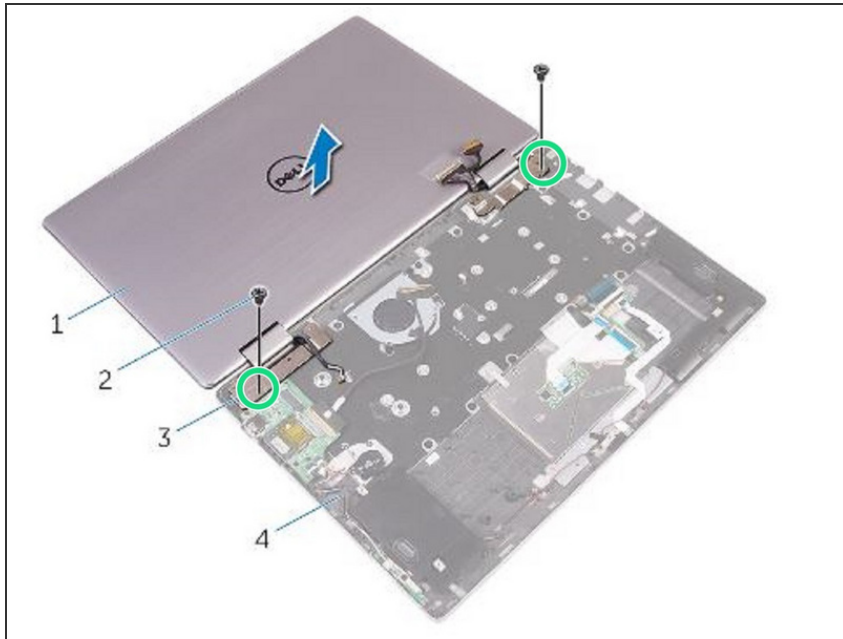
- Remove the screws that secure the display assembly to the palm-rest assembly.

Step 4 — Lifting the Display Assembly



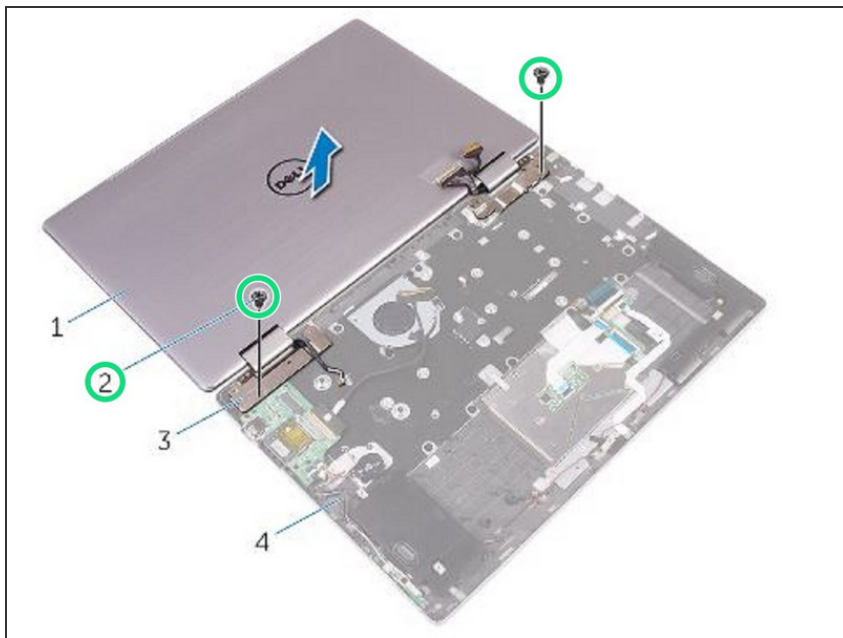
- Lift the display assembly off the palm-rest assembly.

Step 5 — Align the Screw Holes



- With the display facing down, align the screw holes on the display hinges with the screw holes on the palm-rest assembly.

Step 6 — Replace the Screws



- Replace the screws that secure the **NEW** display assembly to the palm-rest assembly.

Step 7 — Turn the Computer Over



- Turn the computer over and close the display.

This document was last generated on 2018-07-31 05:27:09 PM.