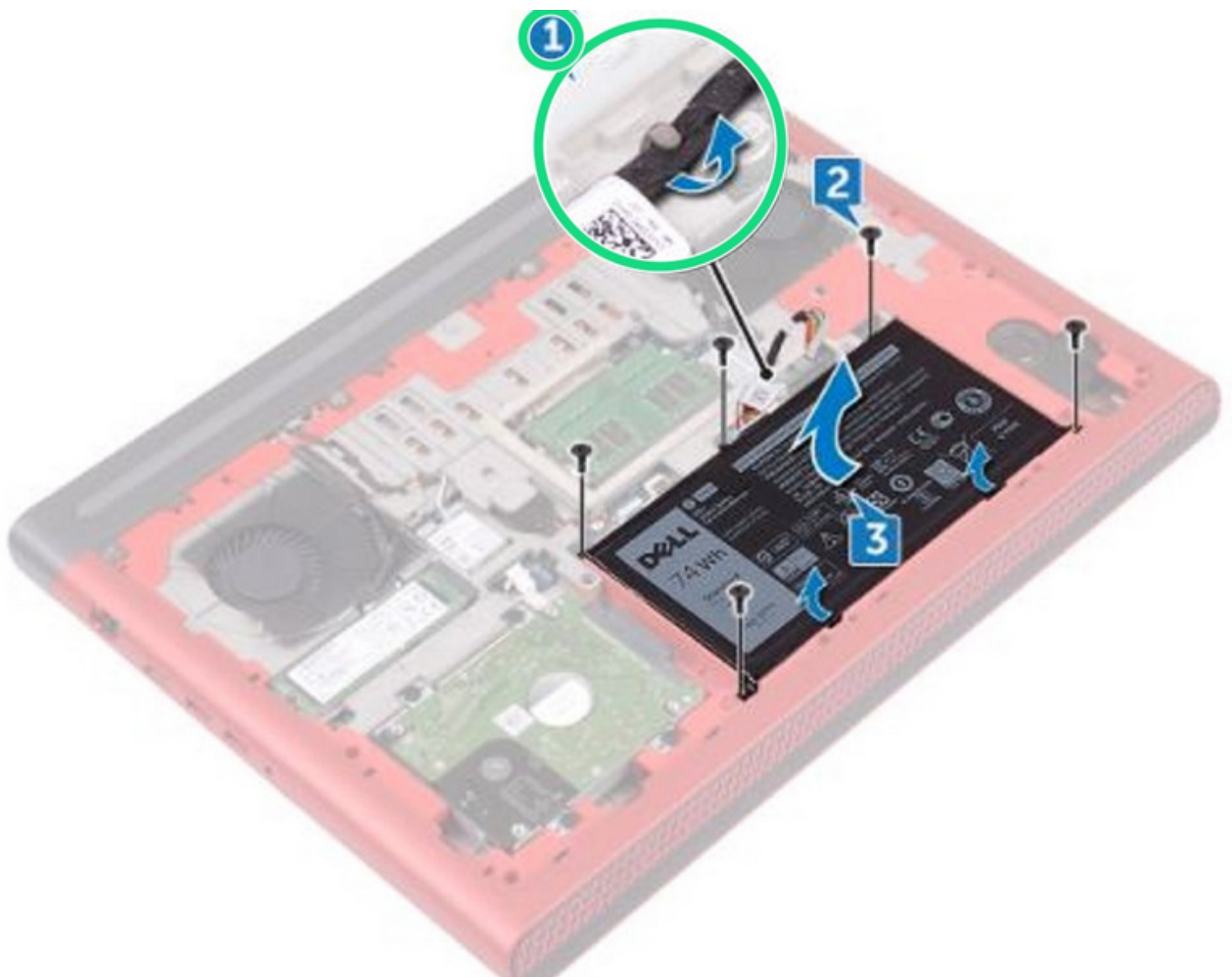




# Dell Inspiron 15 Gaming 7567 Battery Replacement

Written By: Terrence15



## INTRODUCTION

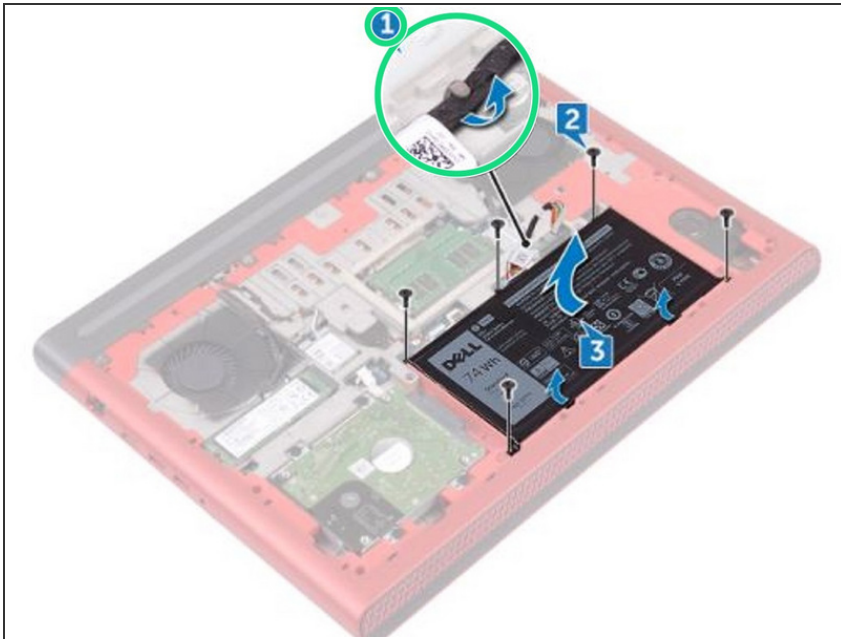
In this guide, we will be showing you how to remove and replace the Battery.

---

### TOOLS:

- [Phillips #0 Screwdriver](#) (1)
-

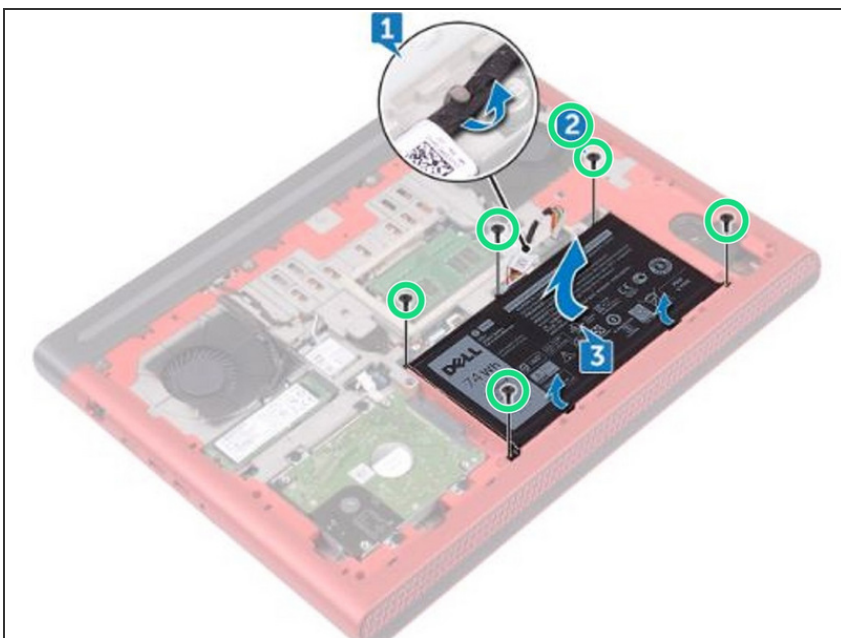
## Step 1 — Remove the Battery Cable



**⚠ WARNING:** Before working inside your computer, read the safety information that shipped with your computer and follow the steps in [Before Working Inside Your Computer](#). After working inside your computer, follow the instructions in [After Working Inside Your Computer](#).

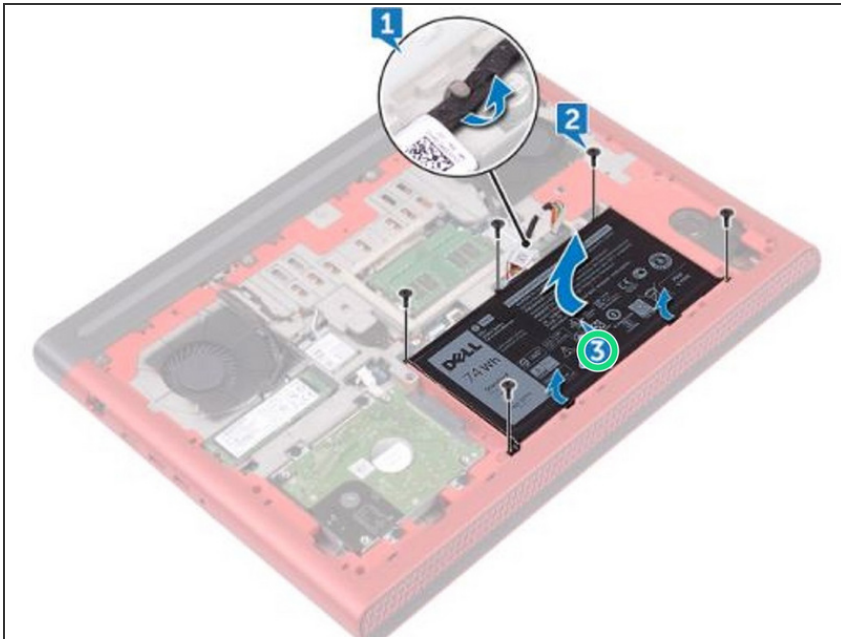
- Remove the battery cable from the routing guide on the computer base.

## Step 2 — Remove the Screws



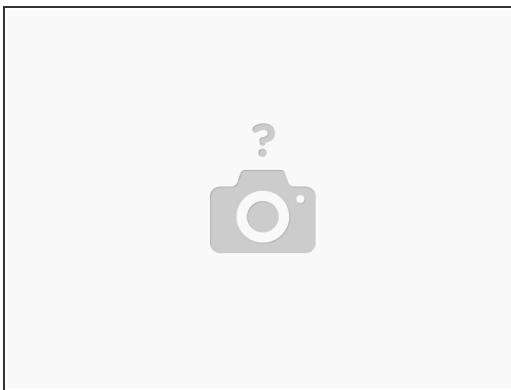
- Remove the five screws (M2x4 T8) that secure the battery to the computer base.

### Step 3 — Lifting the Battery



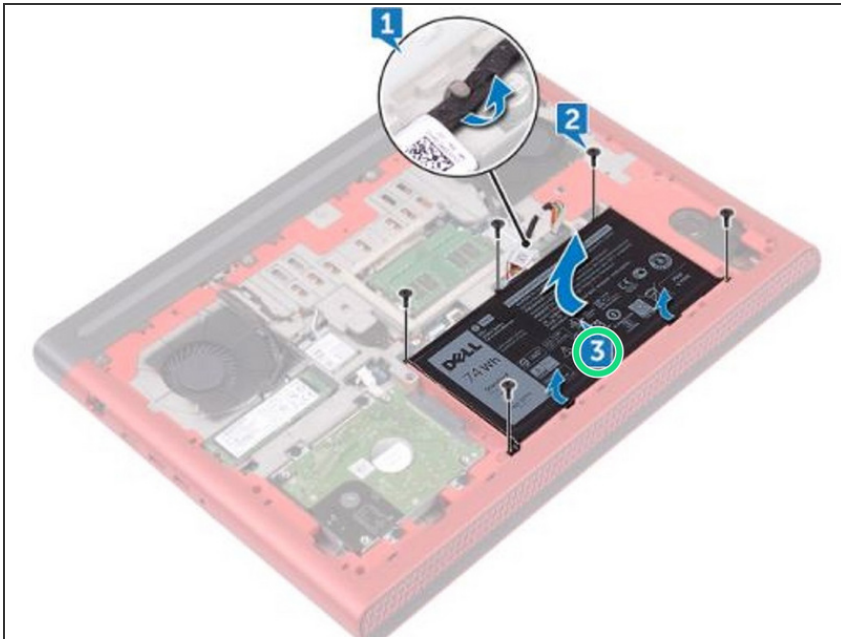
- Lift the battery at an angle off the computer base.

### Step 4 — Open the Display



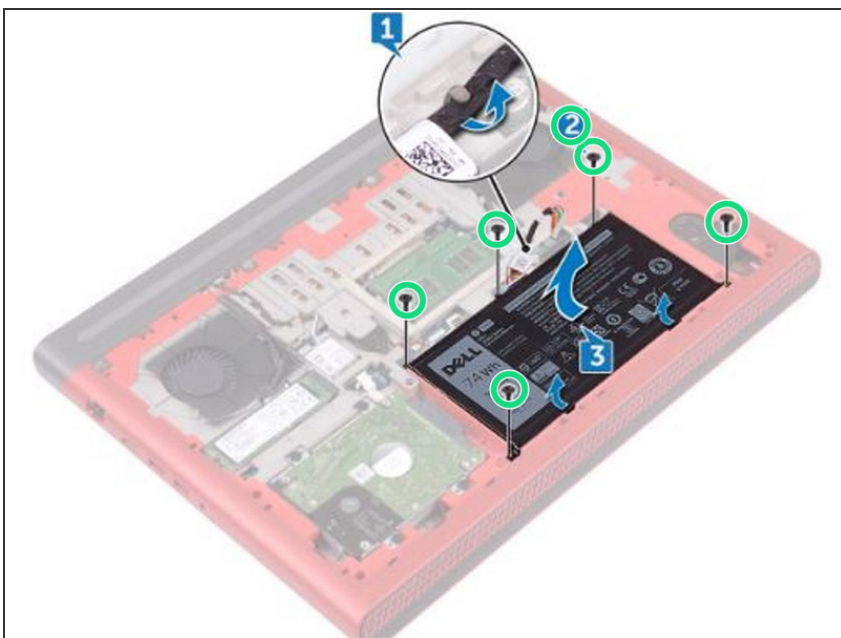
- Turn the computer over, open the display, and press and hold the power button for five seconds to ground the system board.

## Step 5 — Sliding the Battery



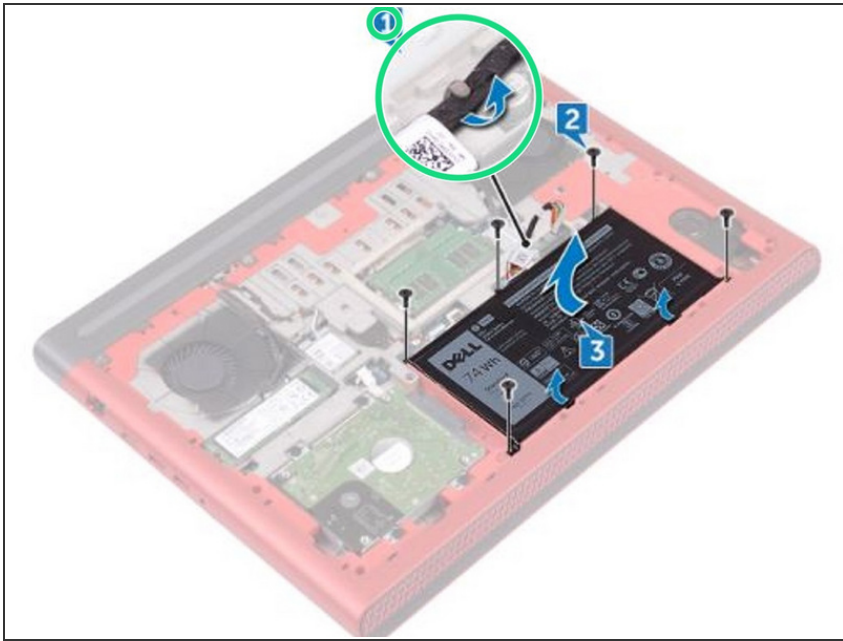
- Slide the battery in the slot on the computer base and align the screw holes on the battery with the screw holes on the computer base.

## Step 6 — Replace the Screws



- Replace the five screws (M2x4 T8) that secure the battery to the computer base.

## Step 7 — Routing the Battery Cable



- Route the battery cable through the routing guides on the computer base.

This document was last generated on 2018-09-14 01:05:05 PM.