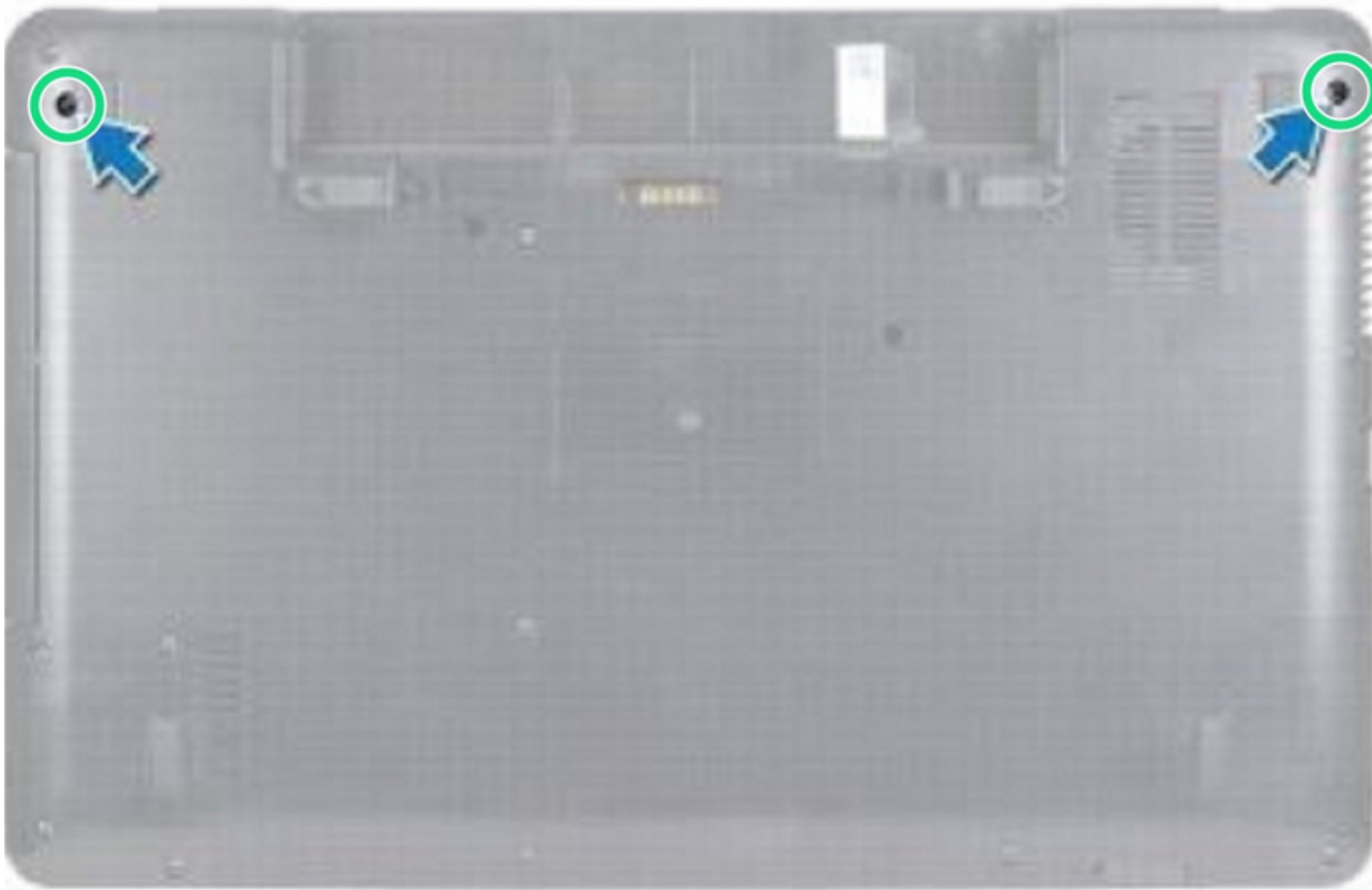




Dell Inspiron 15 M5030 Display Assembly Replacement

Written By: Terrence15



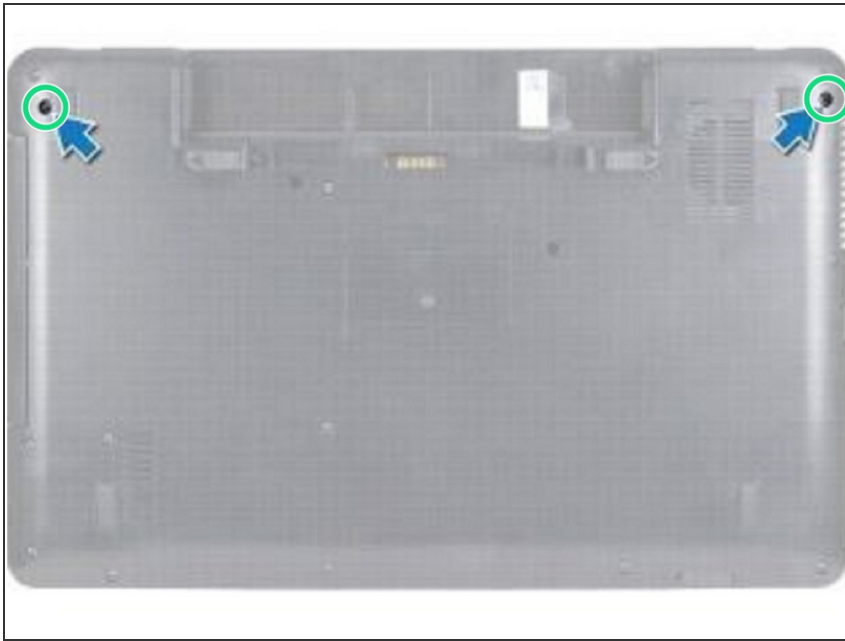
INTRODUCTION

In this guide, we will be showing you how to remove and replace the Display Assembly.

TOOLS:

- [Phillips #0 Screwdriver](#) (1)
-

Step 1 — Remove the Screws



⚠ WARNING: Before working inside your computer, read the safety information that shipped with your computer. Follow the instructions in [Before You Begin](#).

⚠ CAUTION: To avoid electrostatic discharge, ground yourself by using a wrist grounding strap or by periodically touching an unpainted metal surface (such as a connector on your computer).

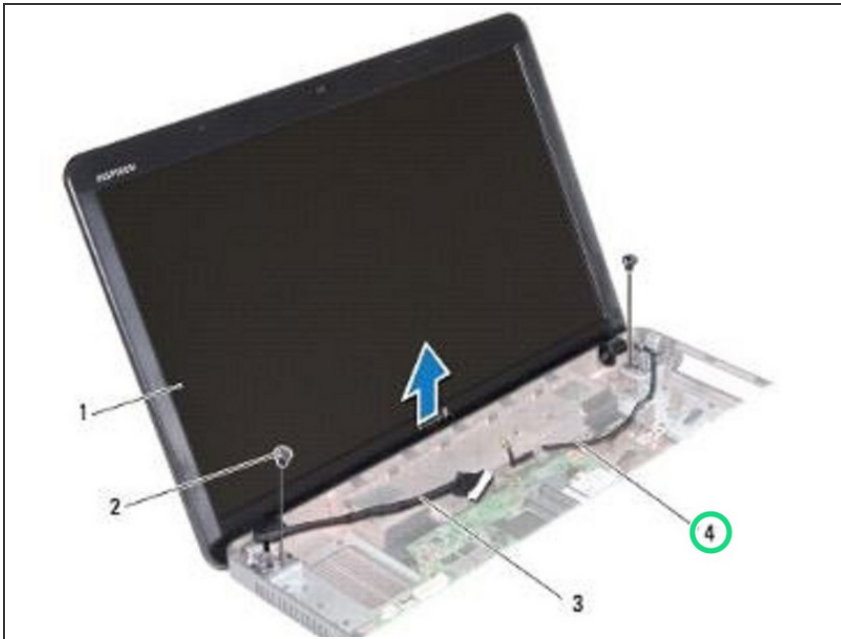
- Remove the two screws that secure the display assembly to the base of the computer.

Step 2 — Open the Display



- Turn the computer over and open the display as far as possible.

Step 3 — Disconnecting the Antenna Cable



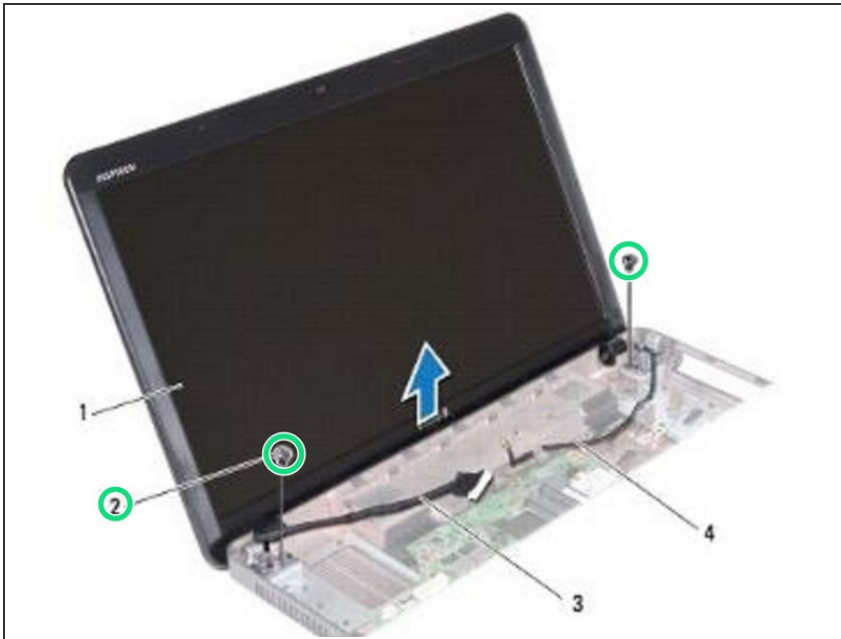
- Make a note of the Wireless Mini-Card antenna cable routing and disconnect the Wireless Mini-Card antenna cable from the Wireless Mini-Card.

Step 4 — Disconnect the Display Cable



- Disconnect the display cable from the connector on the system board and remove it from the routing guide.

Step 5 — Remove the Screws



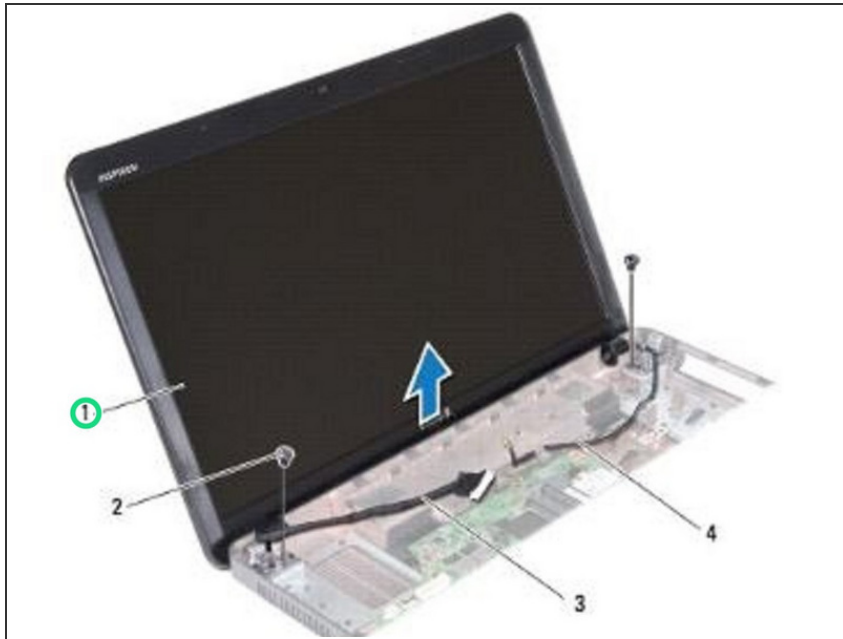
- Remove the two screws (one on each side) that secure the display assembly to the computer base.

Step 6 — Removing the Display Assembly



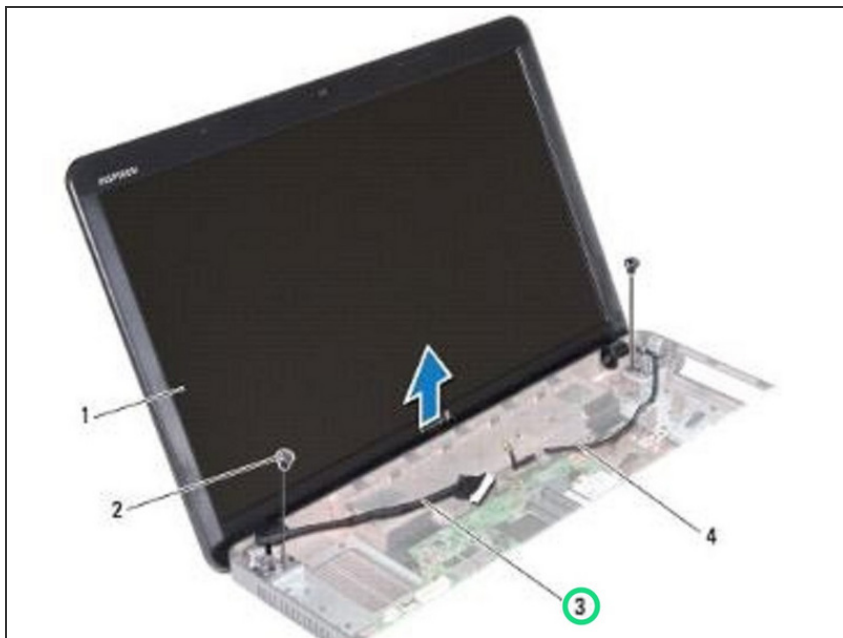
- Lift and remove the display assembly out of the computer base.

Step 7 — Placing the Display Assembly



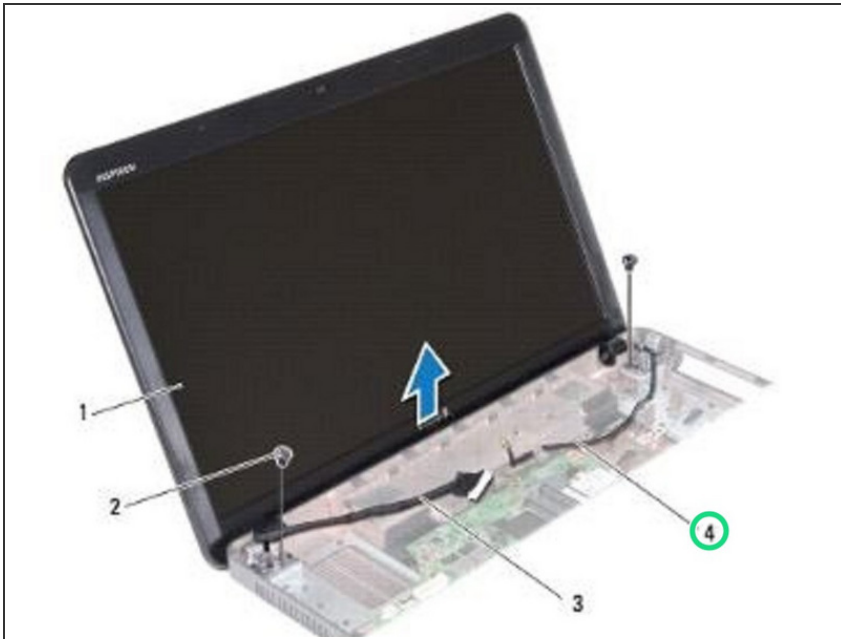
- Place the **NEW** display assembly in position and replace the two screws (one on each side) that secure the display assembly to the computer base.

Step 8 — Routing the Display Cable



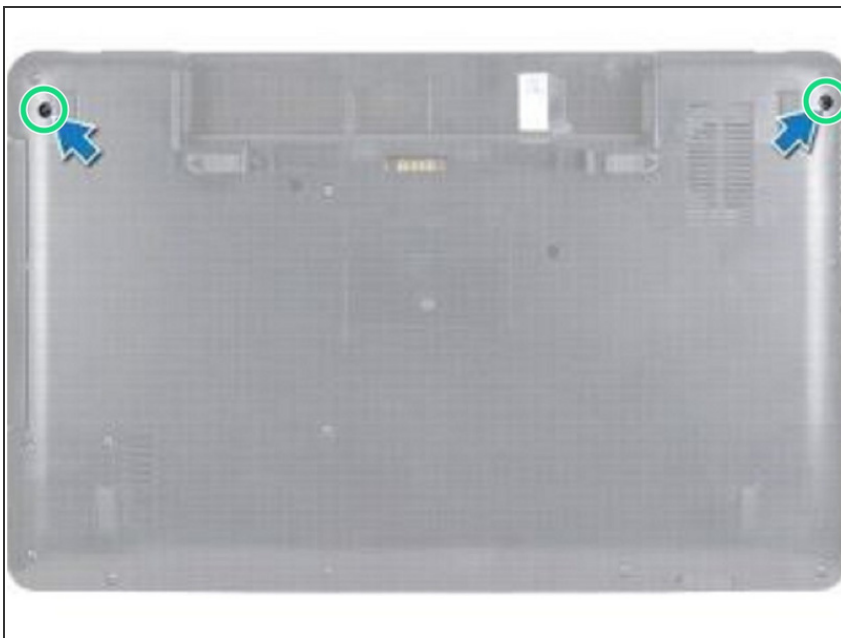
- Route the display cable into the routing guide and connect the display cable to the connector on the system board.

Step 9 — Routing the Cable



- Route the Mini-Card antenna cable into the routing guide and connect the Mini-Card antenna cable to the connector on the Mini-Card.

Step 10 — Replace the Screws



- Turn the computer over and replace the two screws at the base of the computer.