



Dell Inspiron 1520 Display Assembly Replacement

Written By: Terrence15

INTRODUCTION

In this guide, we will be showing you how to remove and replace the Display Assembly.

TOOLS:

- [Phillips #0 Screwdriver](#) (1)
-

Step 1 — Close the Display



 Follow the instructions in [Before You Begin](#).

- Close the display and turn the computer over.

Step 2 — Loosen the Screws



- Loosen the two captive screws that secure the Mini Card compartment cover, then remove the cover and set it aside.

Step 3 — Remove the Screws



- Remove the two M2.5 x 8-mm screws from the bottom of the computer.

Step 4 — Remove the Screws



- Remove the two M2.5 x 8-mm screws from the back of the computer.

Step 5 — Disconnect the Display Cable



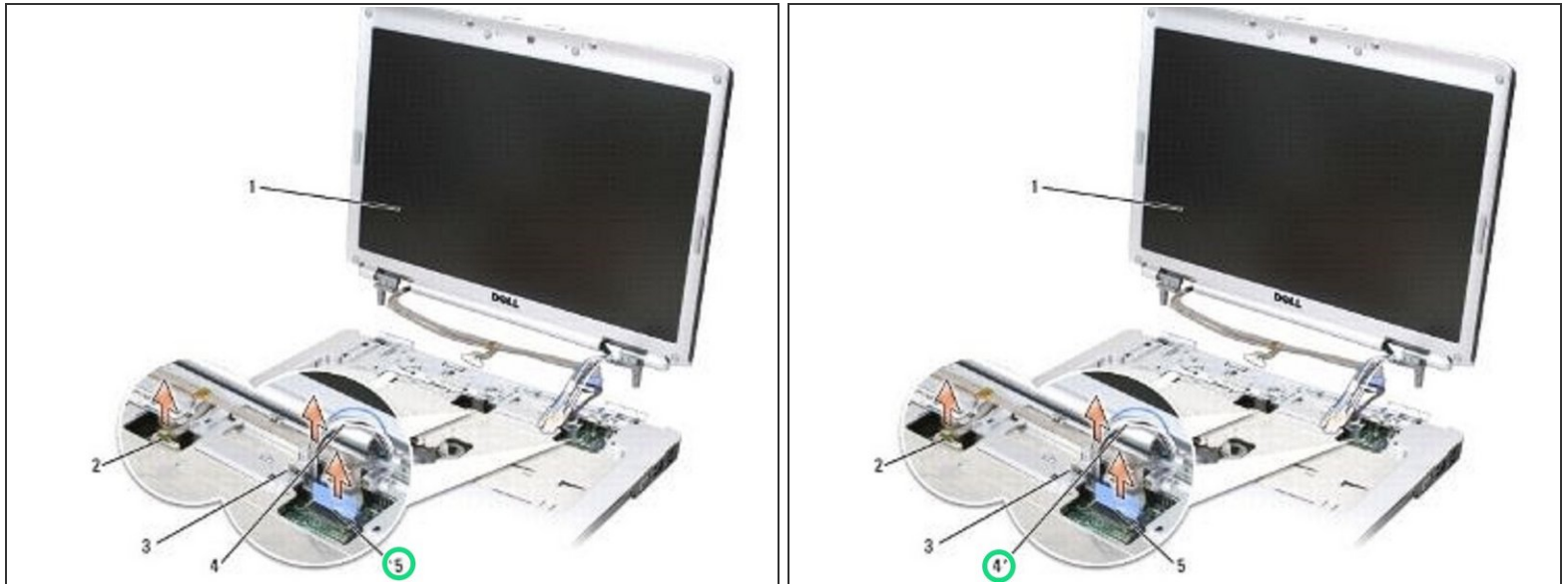
- Loosen the captive grounding screw, then disconnect the display cable from the display cable connector on the system board.

Step 6 — Disconnect the Connector



- Disconnect the camera/microphone cable from the camera/microphone cable connector on the system board.

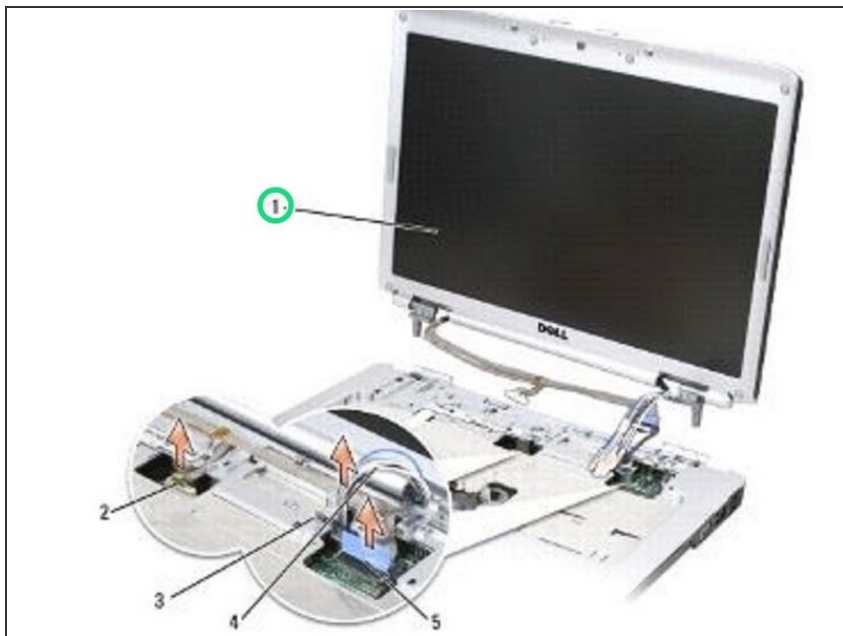
Step 7 — Lifting the Display Cable



- Lift the display cable and antenna cables from beneath the tabs on the palm rest.

(i) NOTICE: Ensure that the display cable and the antenna cables do not get caught beneath the plastic tabs on the palm rest.

Step 8 — Lifting the Display Assembly



- Lift the display assembly out of the computer.

Step 9 — Align the Display Hinges



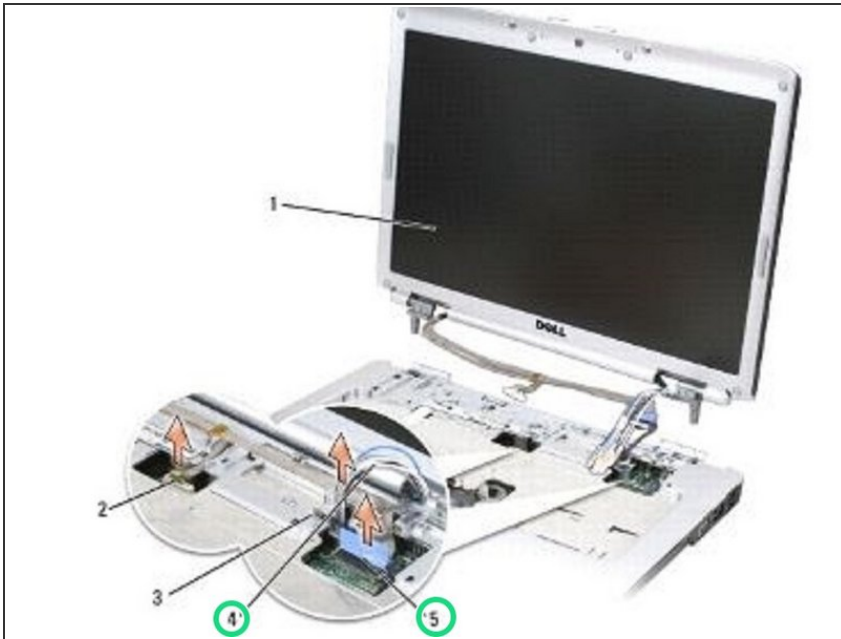
- Align the display hinges with the holes in the base of the computer, then lower the display into place.

Step 10 — Sliding the Antenna Cables



- Slide the antenna cables through the hole in the palm rest and the base of the computer.
- ☑ **NOTICE:** Ensure that the display cable and antenna cables are properly routed and secured beneath the plastic tabs on the palm rest.

Step 11 — Routing the Display Cable



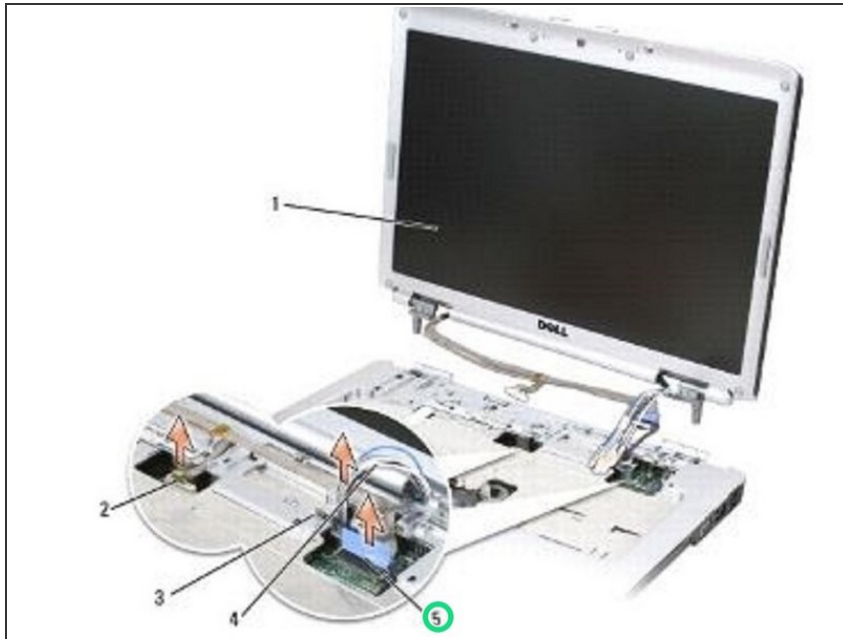
- Route the display cable and antenna cables beneath the plastic tabs on the palm rest.

Step 12 — Connecting the Cables



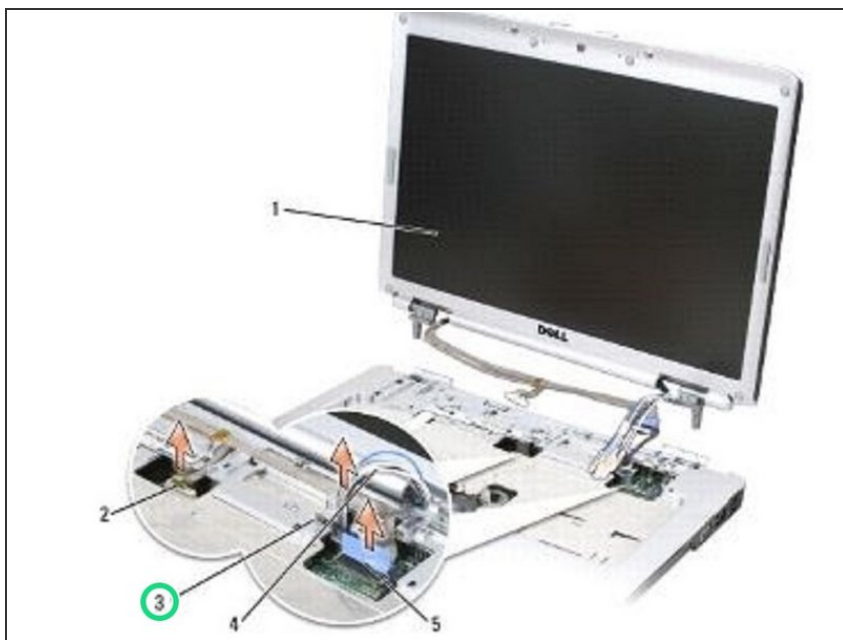
- Connect the camera/microphone cable to the camera/microphone cable connector on the system board.

Step 13 — Connect the Display Cable



- Connect the display cable to the display cable connector on the system board.

Step 14 — Replace the Screw



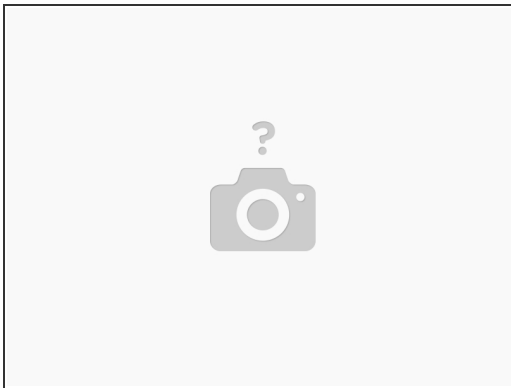
- Replace and tighten the captive grounding screw.

Step 15 — Replace the Screws



- Replace the two M2.5 x 8-mm screws on the back of the computer.

Step 16 — Close the Display



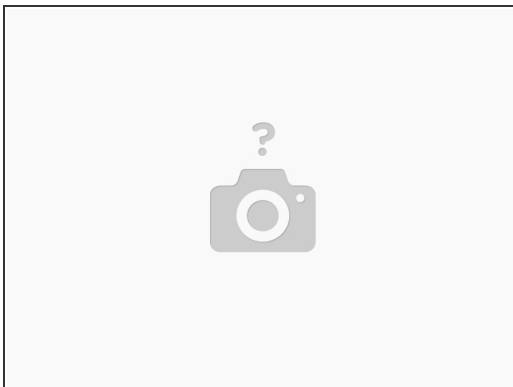
- Close the display and turn the computer over.

Step 17 — Replace the Screws



- Replace the two M2.5 x 8-mm screws on the bottom of the computer.

Step 18 — Replace the Compartment Cover



- Replace the Mini Card compartment cover and tighten the screws.