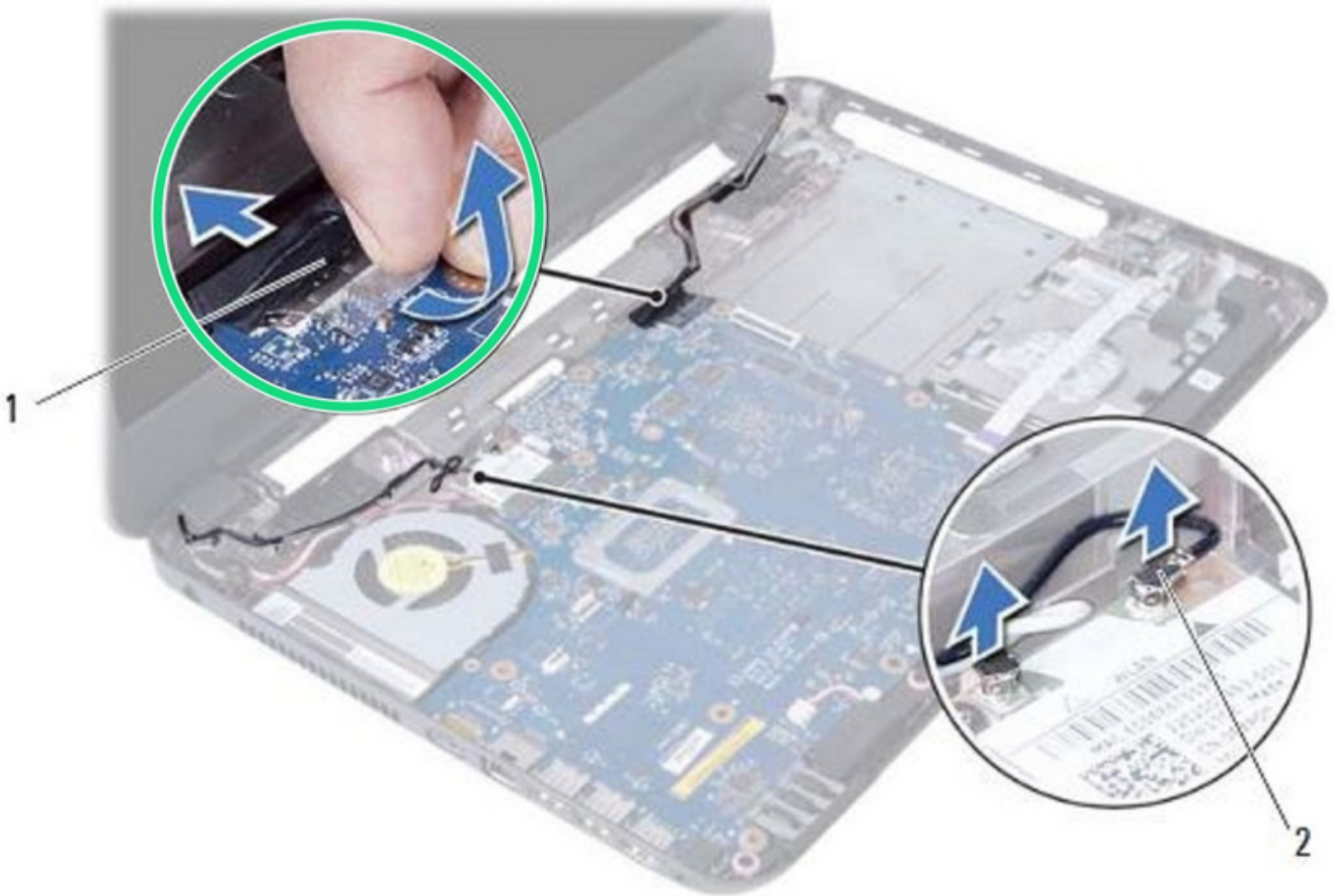




Dell Inspiron 15R 5521 Display Assembly Replacement

Written By: Terrence15



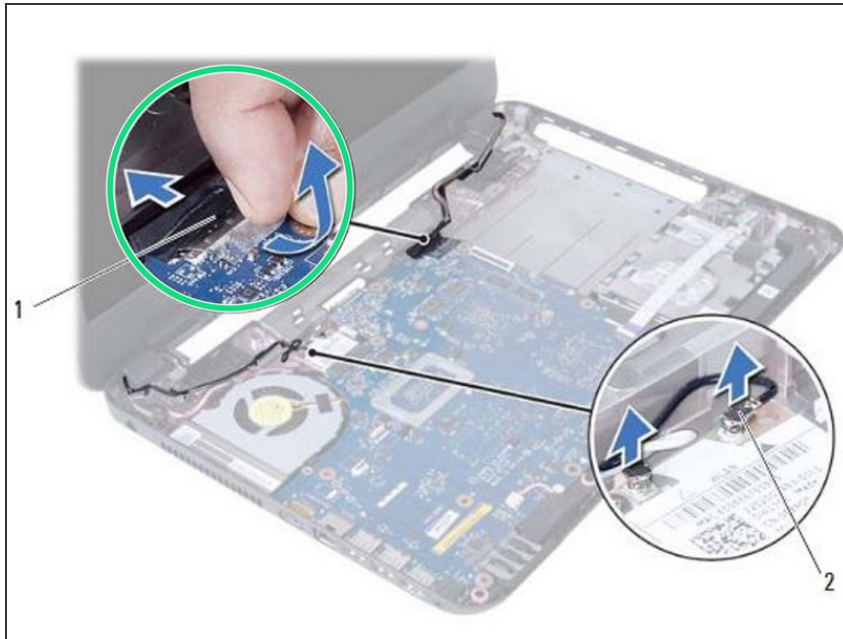
INTRODUCTION

In this guide, we will be showing you how to remove and replace the Display Assembly.

TOOLS:

- [Phillips #0 Screwdriver](#) (1)
-

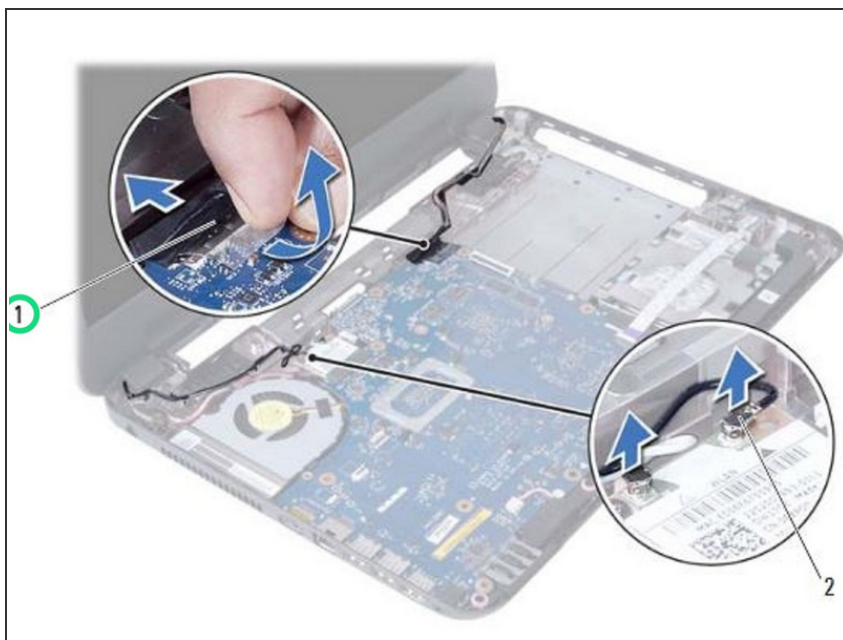
Step 1 — Peeling the Tape



⚠ WARNING: Before working inside your computer, read the safety information that shipped with your computer and follow the steps in ["Before You Begin"](#).

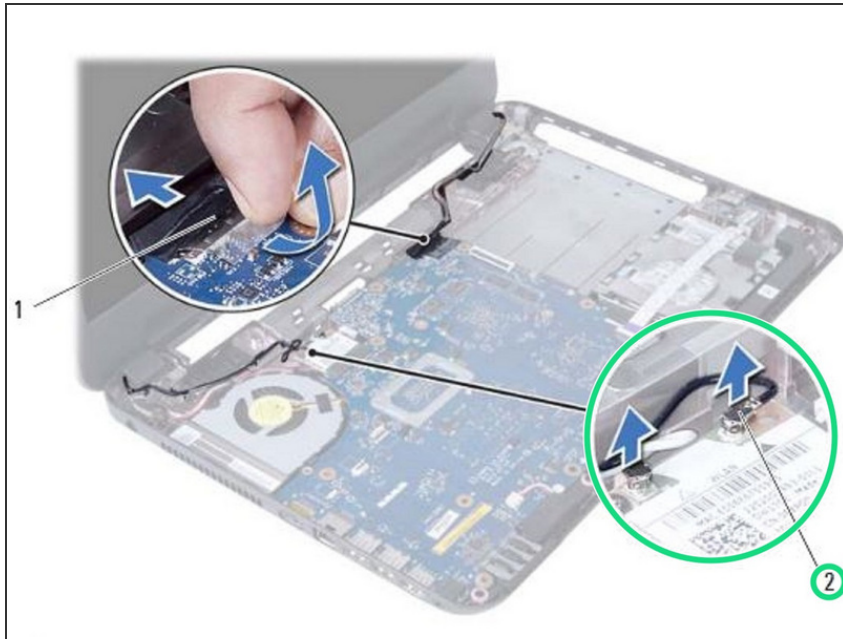
- Peel the tape that secures the display cable to the system board.

Step 2 — Disconnecting the Display Cable



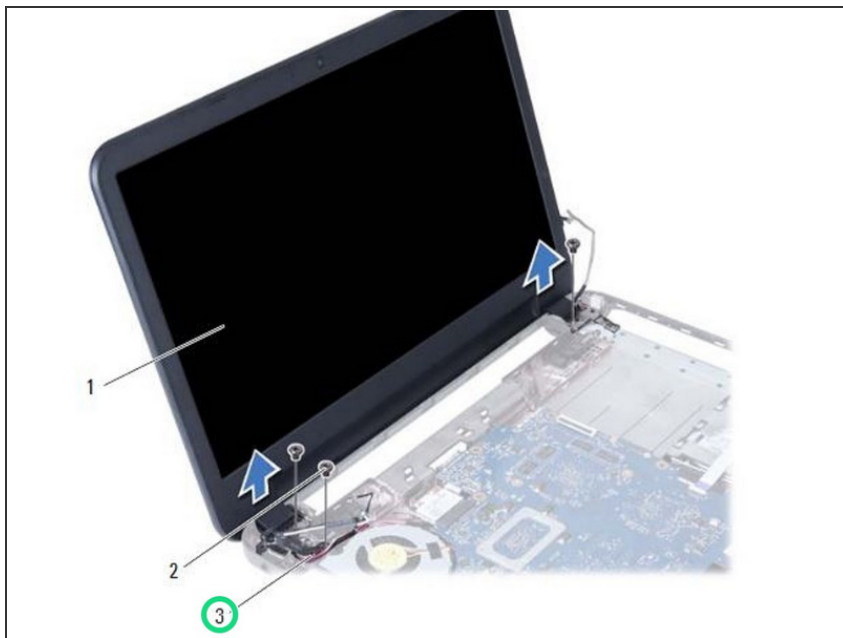
- Disconnect the display cable from the connectors on the system board.

Step 3 — Disconnect the Cables



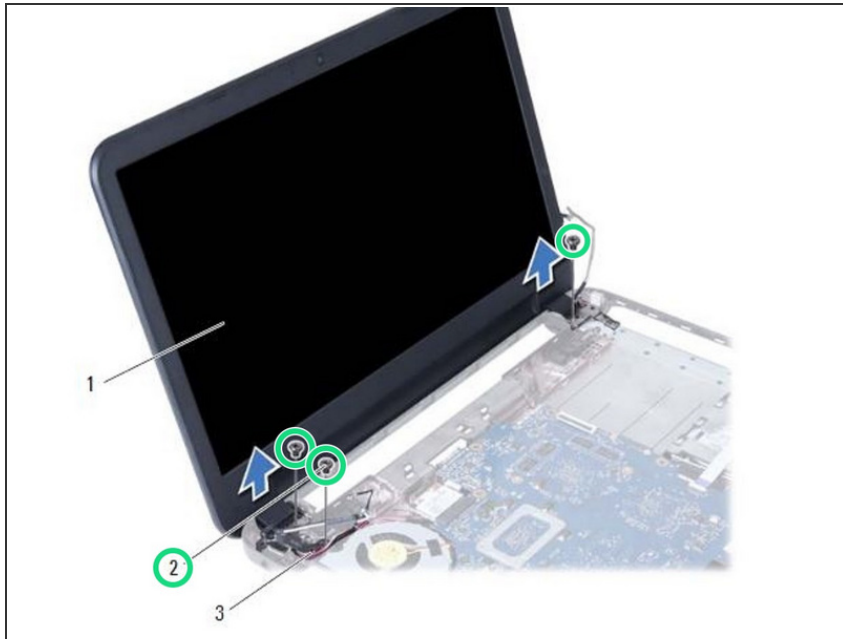
- Disconnect the wireless mini-card cables from the connectors on the wireless mini-card.

Step 4 — Moving the Port Cable



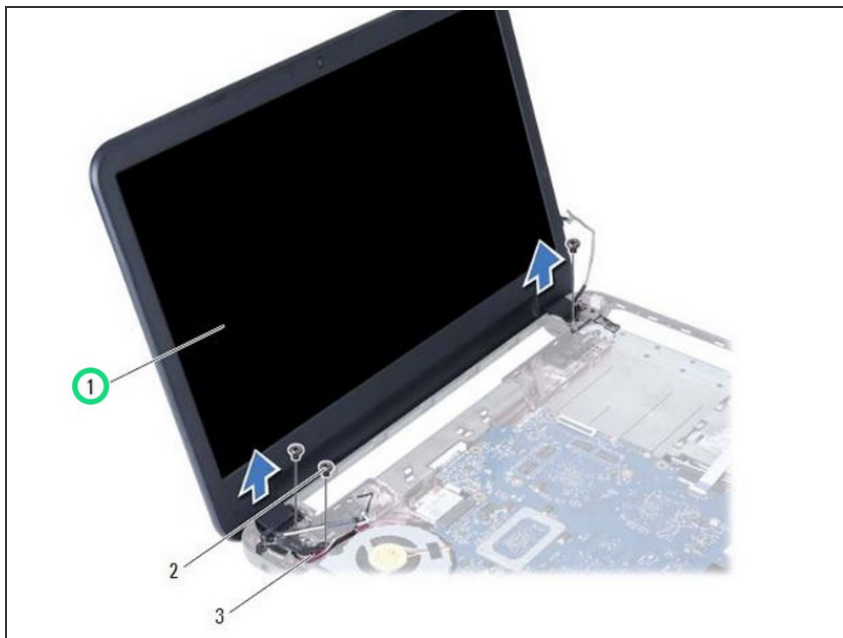
- Move aside the power adapter-port cable from the screws.

Step 5 — Remove the Screws



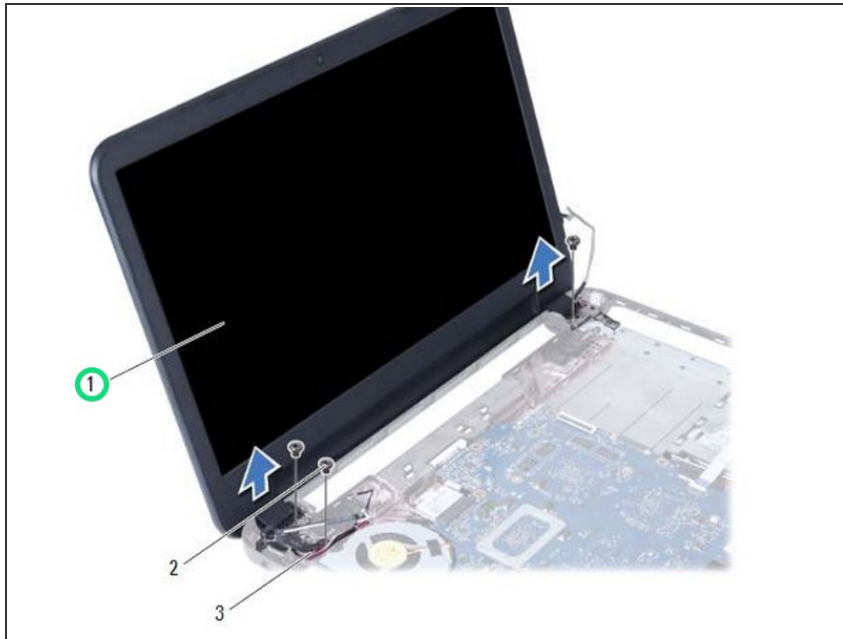
- Remove the screws that secure the display assembly to the computer base.

Step 6 — Lift the Display Assembly



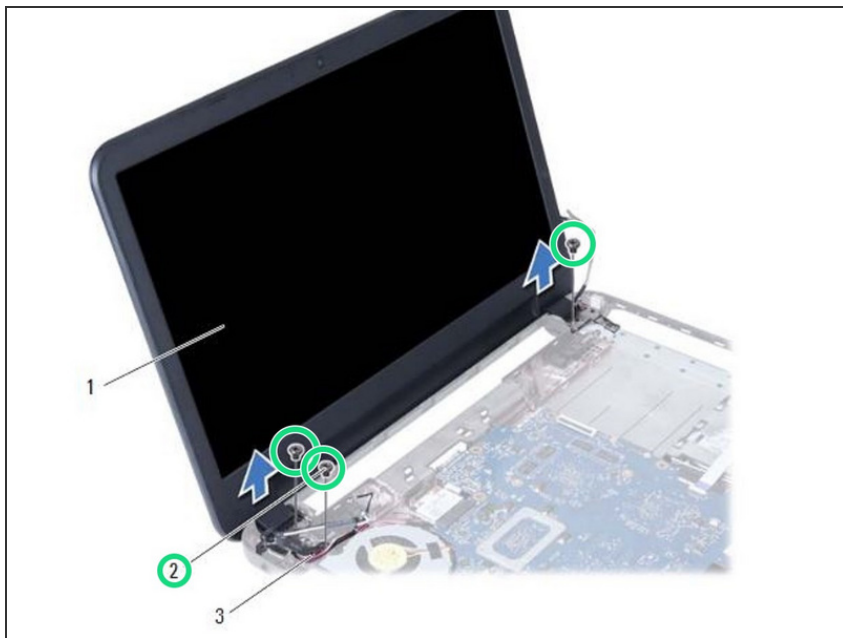
- Lift the display assembly off the computer base.

Step 7 — Placing the Display Assembly



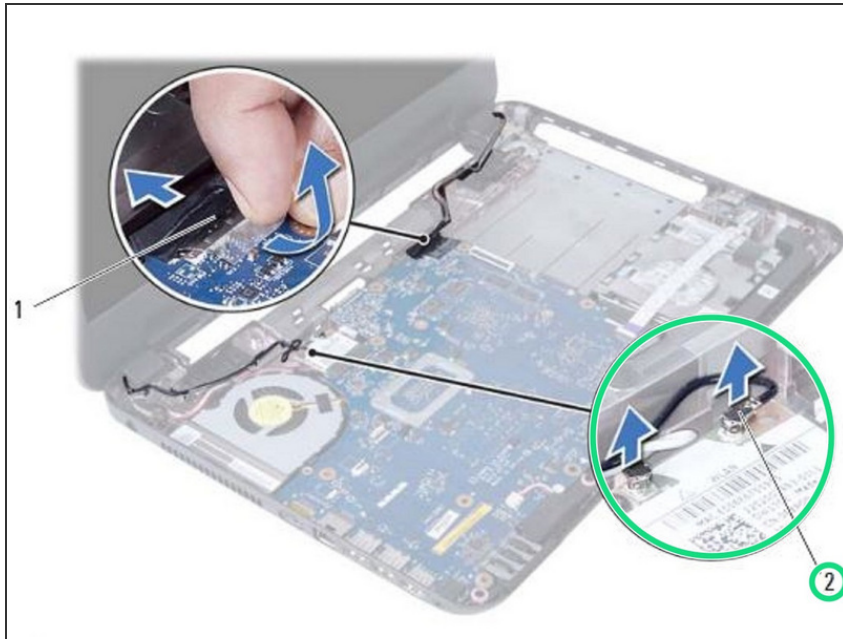
- Place the **NEW** display assembly on the computer base and align the screw holes on the display assembly with the screw holes on the computer base.

Step 8 — Replace the Screws



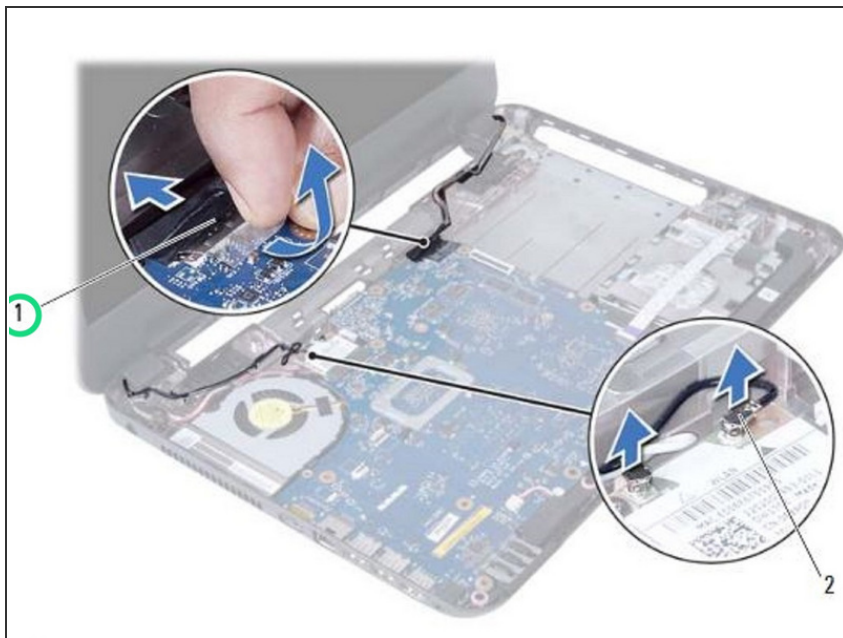
- Replace the screws that secure the display assembly to the computer base.

Step 9 — Connecting the Cables



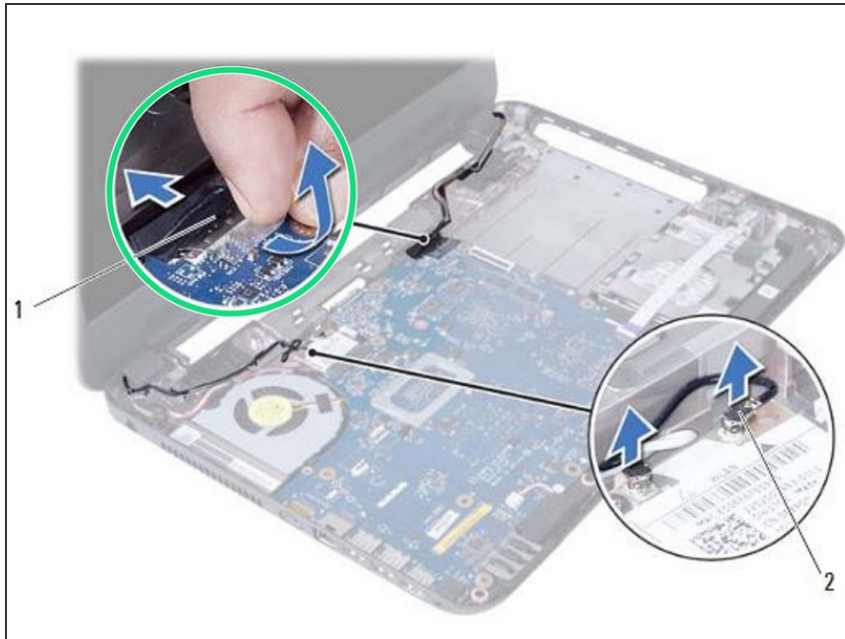
- Connect the wireless mini-card cables to the connectors on the wireless mini-card.

Step 10 — Connect the Display Cable



- Connect the display cable to the connector on the system board.

Step 11 — Adhering the Tape



- Adhere the tape that secures the display cable to the system board.

This document was last generated on 2018-09-01 01:36:00 PM.