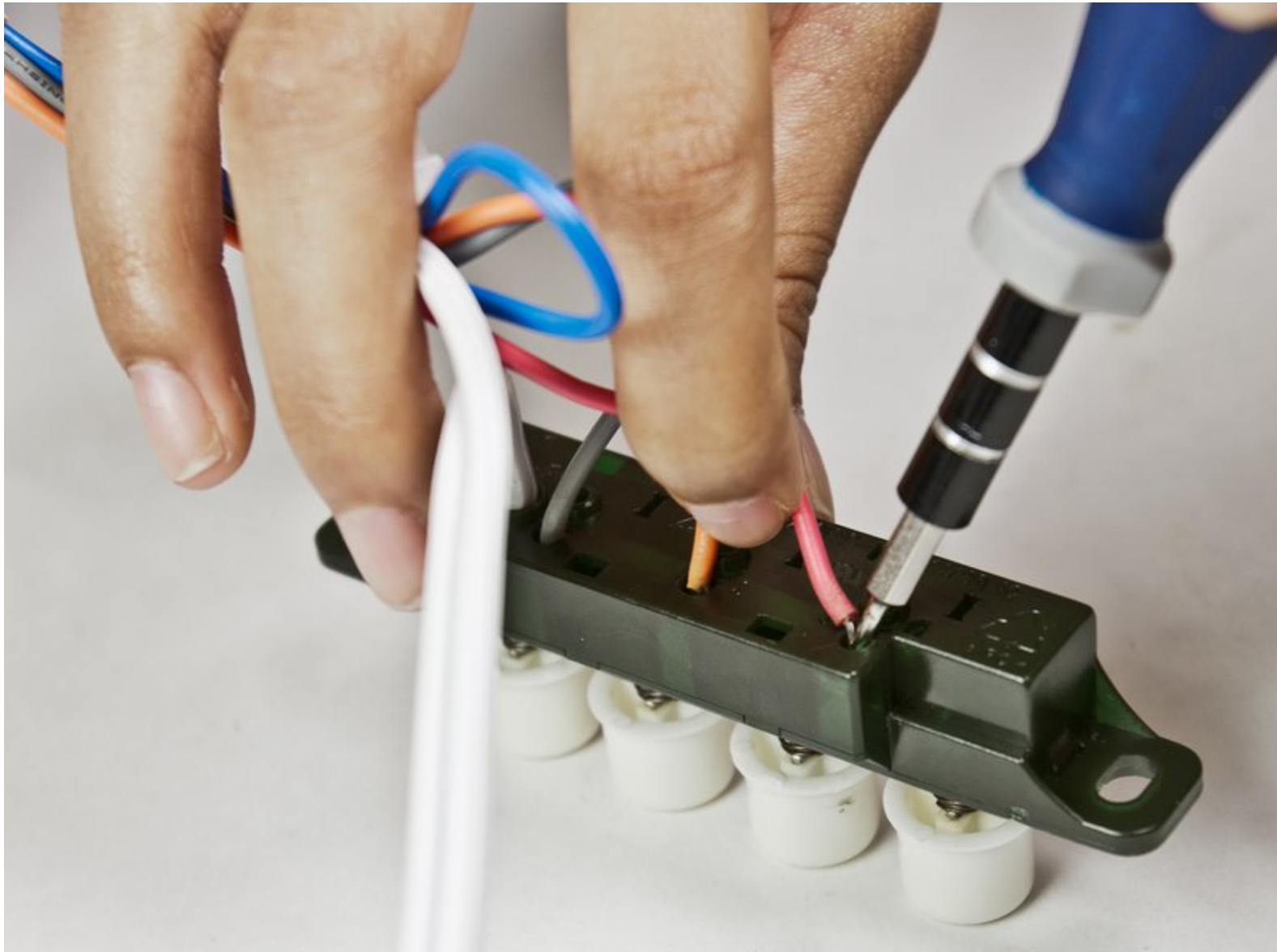




GD Midea FT30-3D Power/Speed Switch Replacement

This guide will show you how to replace the power/speed switch on the fan

Written By: Alan Su



 **TOOLS:**

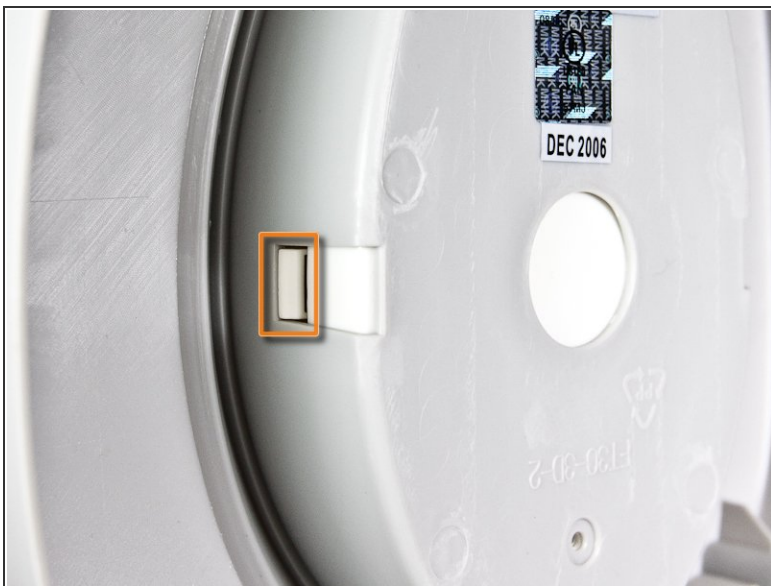
- 1.5 mm Flathead Screwdriver (1)
 - Phillips #1 Screwdriver (1)
-

Step 1 — Bottom Base



- Locate and remove the 14.5 mm Phillips #1 screw on the bottom of the fan base.

Step 2



- Locate the gray base support release tabs found on either side pictured in the first image.
 - ⓘ There are release tabs on each side of the base.
- Press both release tabs in with the tip of your fingers and pull the gray base support until the tabs are cleared.

Step 3



- Continue removing the gray base support by pressing your thumb into the circular opening in the base and pulling with your fingers on the back side.
- **Notice** that on the internal front tip of the base there is a tab. Because of this tab the back end will pivot off at that point.

Step 4



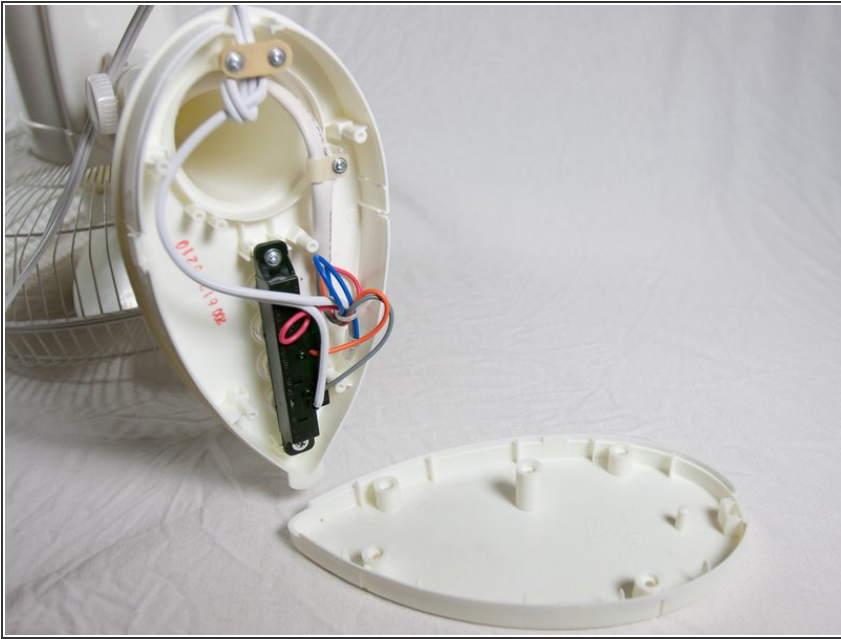
- After the base has separated more it will be easy to fully remove it. Continue pulling the back edge of the gray base support, rotating it around the front tab until it comes off completely.

Step 5



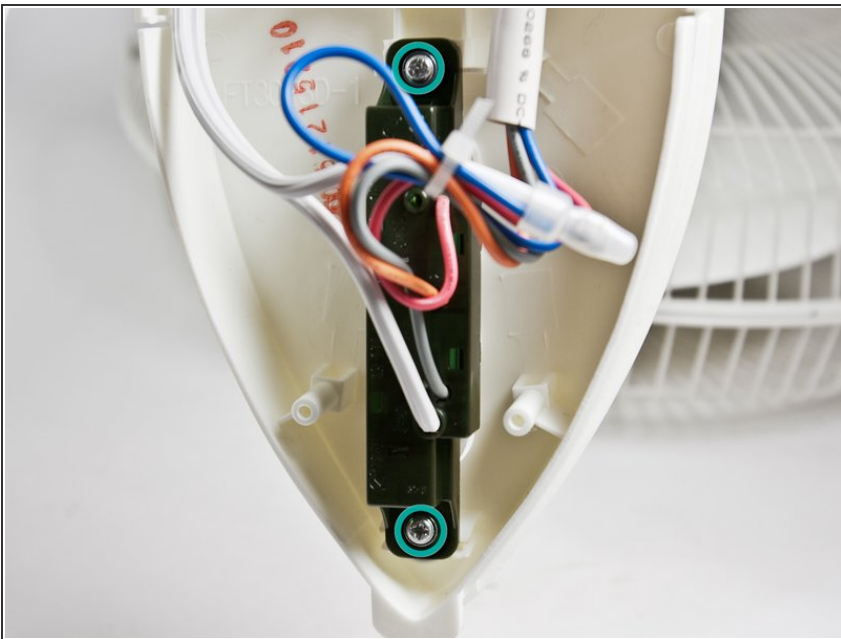
- Remove the following five 14.5 mm Phillips #1 screws found on the bottom.
- ⓘ All of the screws are recessed by 17.5 mm, so ensure your screwdriver can reach that far.

Step 6



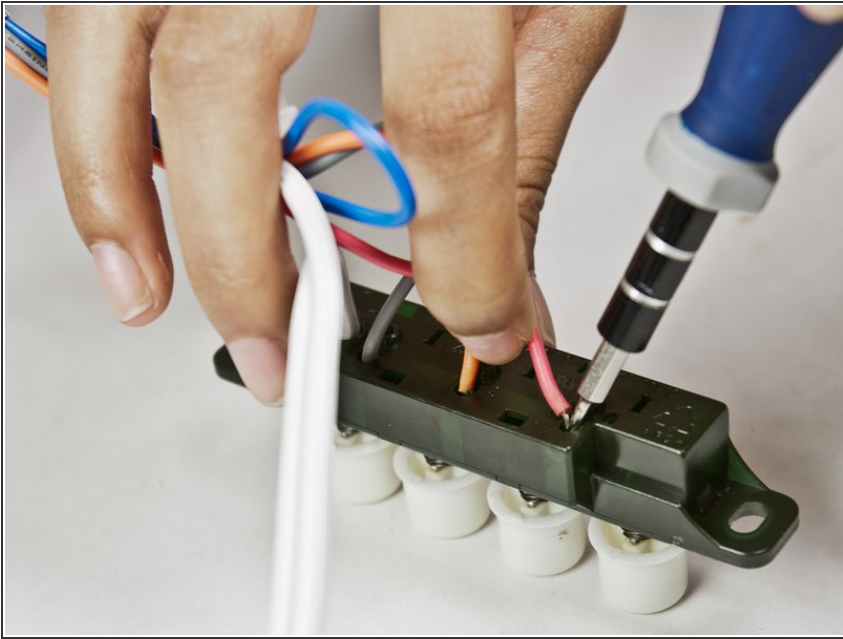
- Once all five screws have been removed the base cover should fall right off with out any effort.
- ⚠ When putting the base cover back on; be careful to make sure that none of the wires are pinched.

Step 7 — Power/Speed Switch



- Remove the two 10 mm Phillips #1 screws found connecting the switch to the case.
- ⓘ Notice the AC power cord line (white wire) goes into the switch under the **[Off]** button

Step 8

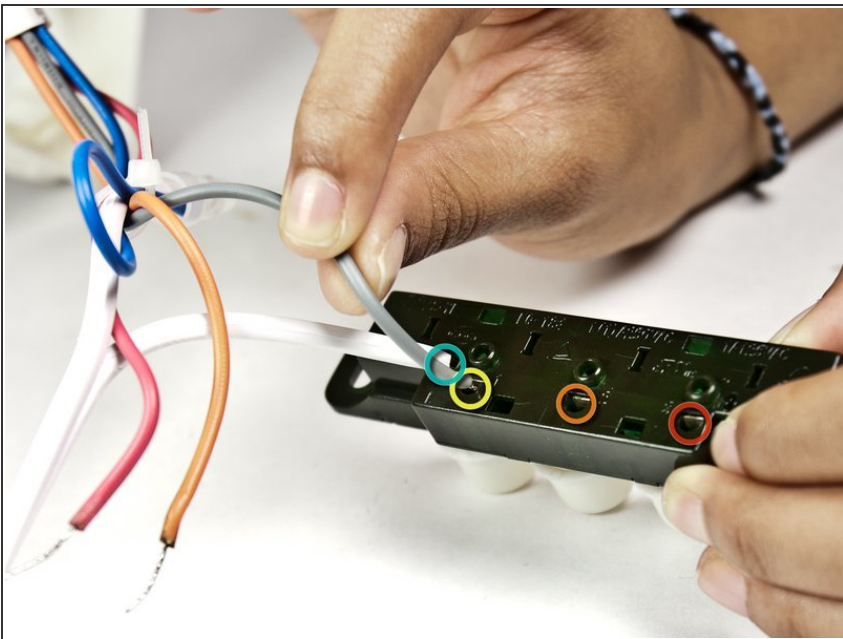


- Take the 1.5 mm Flathead Screwdriver, or any thin elongated tool that fits into the semi-circular holes along side the wires. Press into the hole gently to release the grip on the wires.

⚠ The wires should release with ease if done properly.

★ When reassembling; skip this step.

Step 9



- Take the new switch, and simply push the wiring into the correct holes:
 - AC Power Cord (white wire)
 - Low speed (gray wire)
 - Medium speed (orange wire)
 - High speed (red wire)

To reassemble your device, follow these instructions in reverse order.