



GPD WIN Silicon Pad Replacement

GPD WIN is a very nice game machine. Let's change the silicone pad immediately.

Written By: noria901



INTRODUCTION

However, the controller got stucked too much because he was passionate about it.

In this way you will never be able to fly or reload!

TOOLS:

- [iFixit Opening Picks set of 6](#) (1)
- [54 Bit Driver Kit](#) (1)

PARTS:

- [New Item](#) (1)

GPDWINの交換パーツはTaobaoのGPD Shopからのみ入手可能です。

<https://shop115985484.taobao.com/> 購入体験はTwitterを参照してください

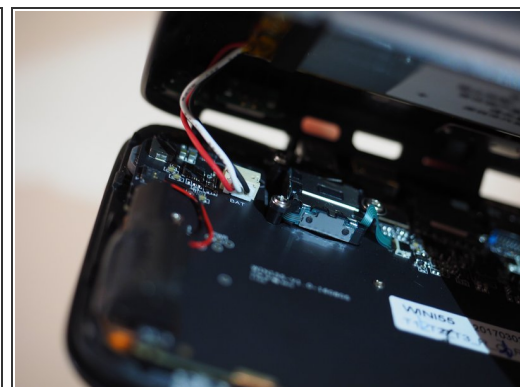
<https://twitter.com/noria901/status/1009429169510363136>

Step 1 — Remove the screw of the case



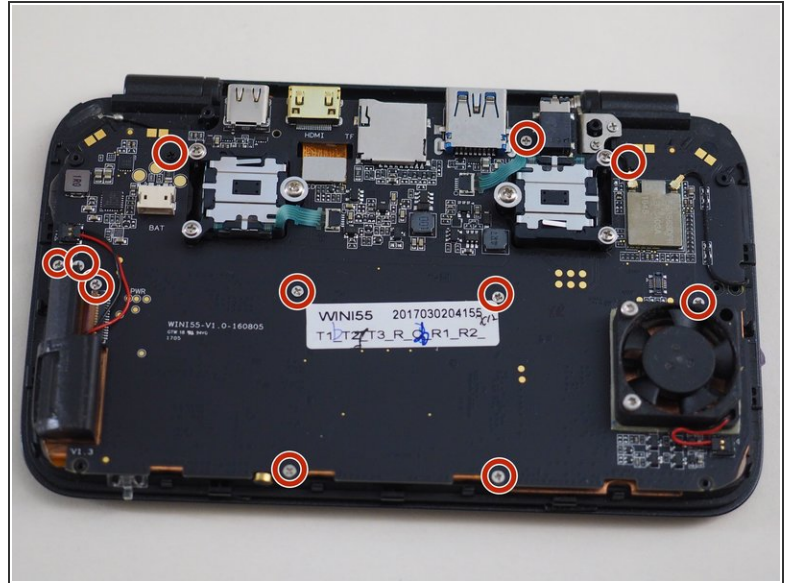
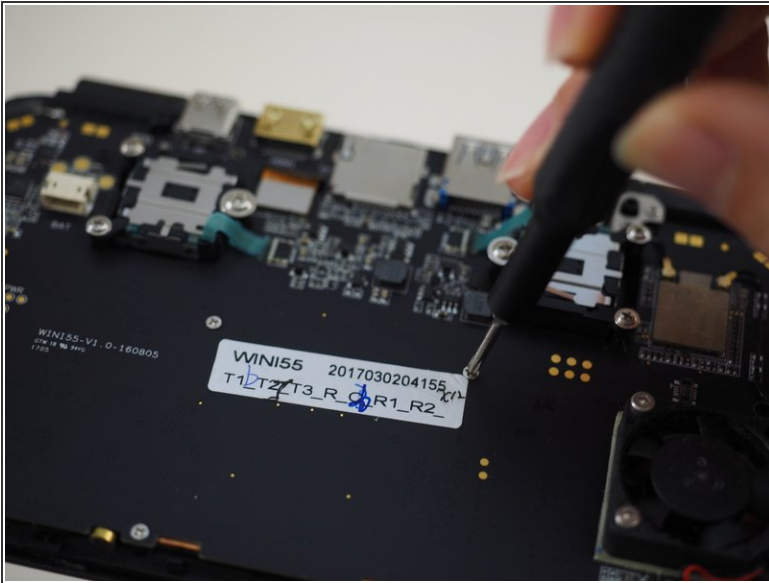
- Remove the case screws

Step 2 — Remove case



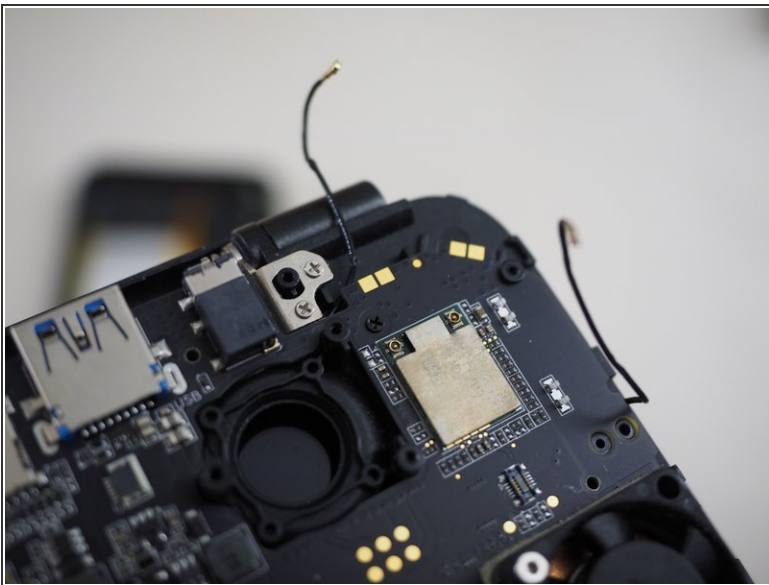
- There is a small space beside the keyboard, insert the pick and remove the claw
- As you open the device, you can see that the flexible cable and the battery cable are connected. Then unplug the connector.

Step 3 — Remove screws on the logic board



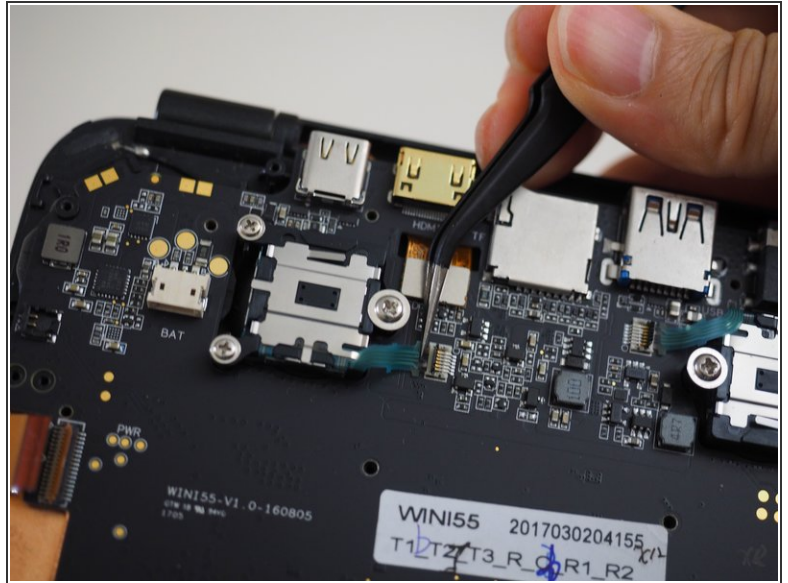
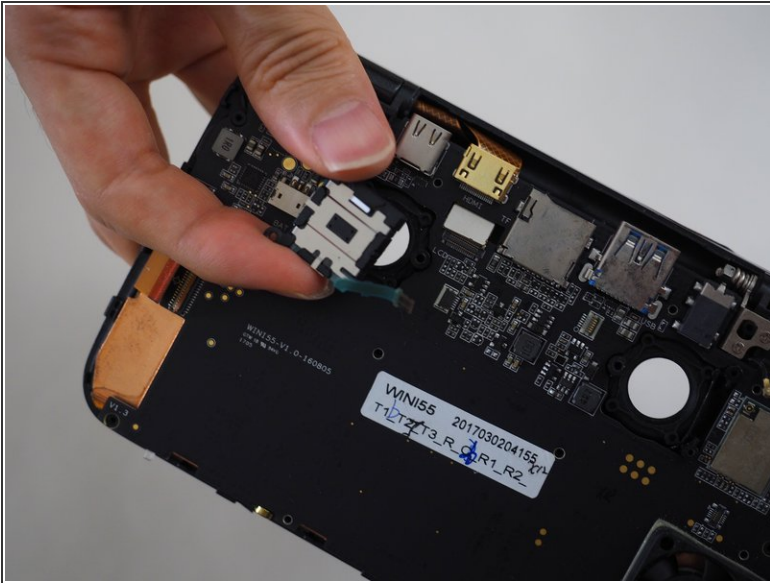
- Remove screws on the logic board.
- Because some black threads are mixed, do not forget to remove

Step 4 — Remove the wifi connector on the logic board



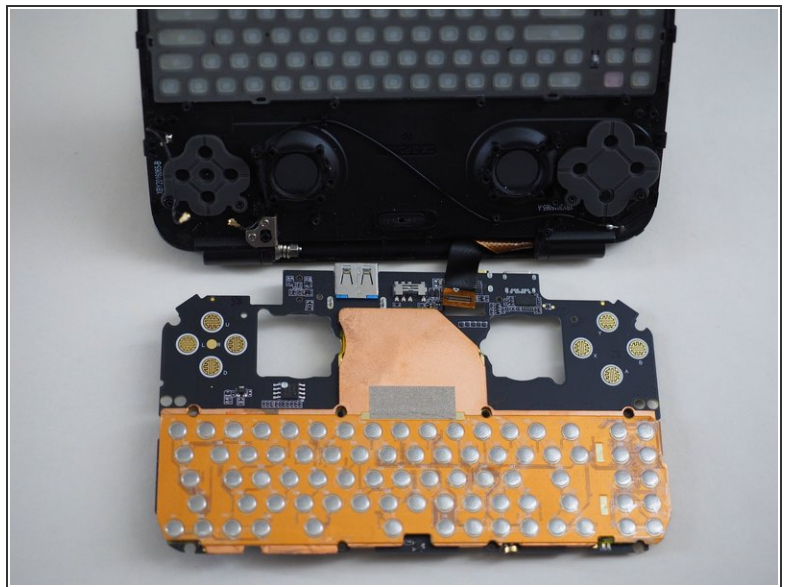
- Remove Wi-Fi antenna cable and LCD connector

Step 5 — Remove the joystick



- Remove the screws of the joystick and remove the flex cable from the connector.
- Then, it is ready to pull logic board out of the case.

Step 6 — Replace the silicone pad



- You can access the silicone pad by removing the logic board.
- Replace a sticky silicon pad

To reassemble your device, please follow these steps in reverse order.

This document was last generated on 2019-07-17 09:34:10 AM.