



Samsung Epic 4G Power Button Replacement

Installing a new power button into your Samsung Epic 4G requires little experience and minimal phone disassembly.

Written By: Andrew Cunningham



INTRODUCTION

This guide details how to install a new power button into your Samsung Epic 4G. Directions are provided for both disassembly and reassembly.

TOOLS:

- [Phillips #000 Screwdriver](#) (1)
 - [Spudger](#) (1)
-

Step 1 — Phone Case



- Turn off the phone using the "Power Button" located on the left side of the phone.
- Slide your fingernail along the edge of the device and pull at the plastic backing as shown in the figure.
- ⓘ While pulling at the backing, you will hear a snap. This means it is coming off the phone.

Step 2



- After hearing the snap, pull at the plastic backing gently to remove it.

Step 3 — Battery



- Remove the battery from the device by pulling up on the battery edge.

Step 4 — Removing the Memory Card:



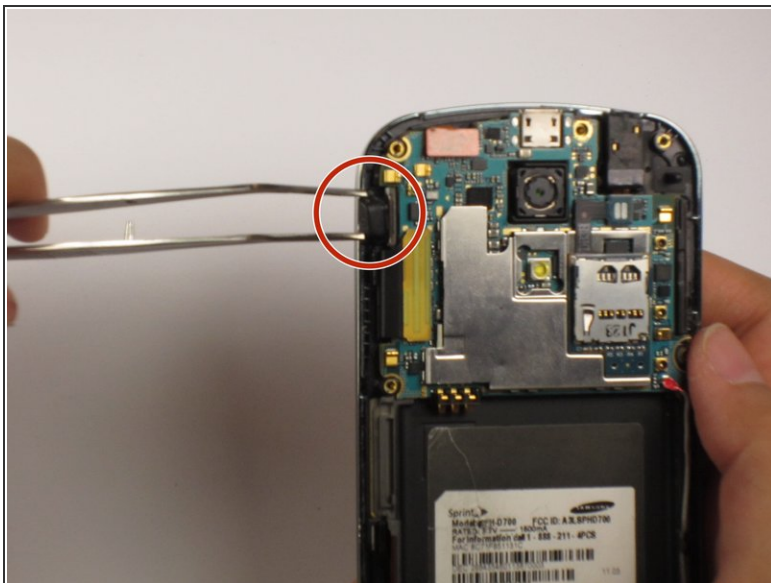
- Remove the memory card from the device by gently sliding it out of its holder.

Step 5 — Removing the Back Housing



- Remove the seven screws from the back of the phone using the Phillips screwdriver.
- Separate the back housing from the silver trim around the phone using a nylon spudger.
- ⓘ While separating the two pieces, most of the buttons (including the power button) will fall out.

Step 6 — Removing the Power Button



- If it did not fall out in the previous step, remove the power button using tweezers.
- ⓘ At this point, you can replace the button with a new one.

To reassemble your device, follow these instructions in reverse order.

This document was last generated on 2019-08-24 09:30:00 PM.