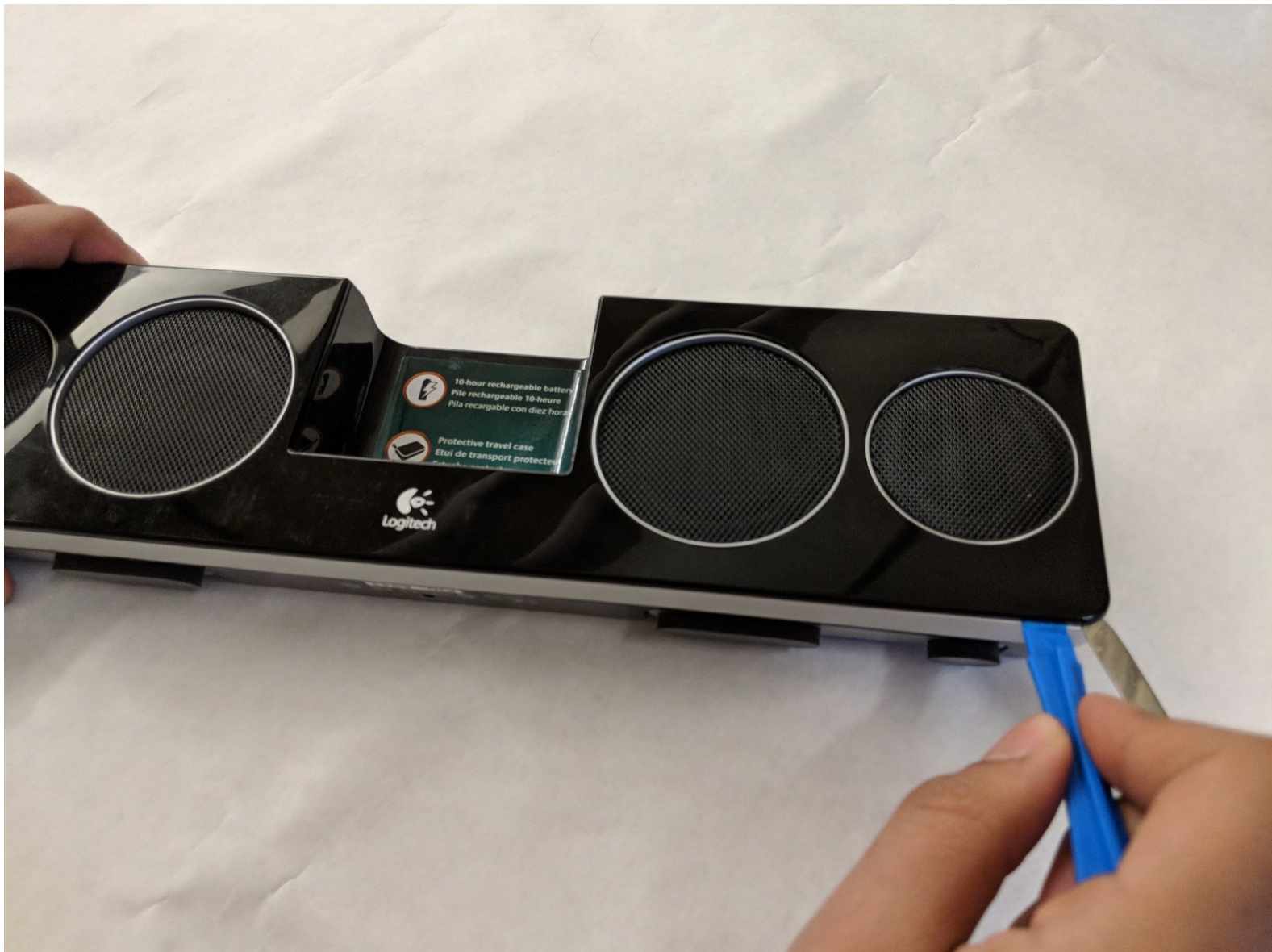




Logitech Pure-Fi Anywhere 2 Inner Speaker Cones Replacement

This guide will demonstrate how to replace inner speaker cones for Pure-Fi Anywhere 2 (Both side)

Written By: junyi yang



This document was generated on 2019-09-22 06:04:37 PM (MST).

 **TOOLS:**

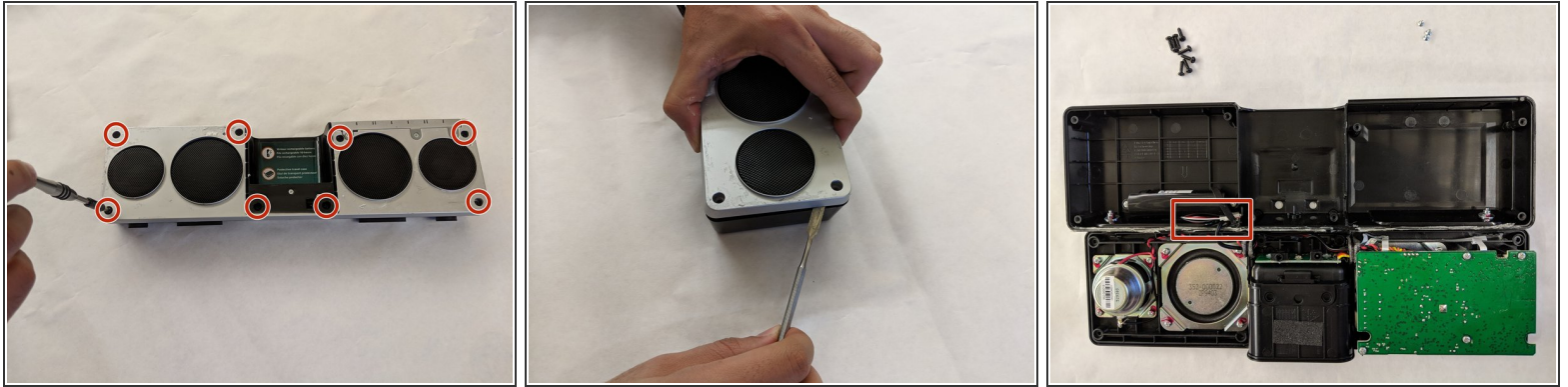
- [54 Bit Driver Kit](#) (1)
 - [iFixit Opening Tools](#) (1)
 - [Metal Spudger](#) (1)
-

Step 1 — Inner Speaker Cones



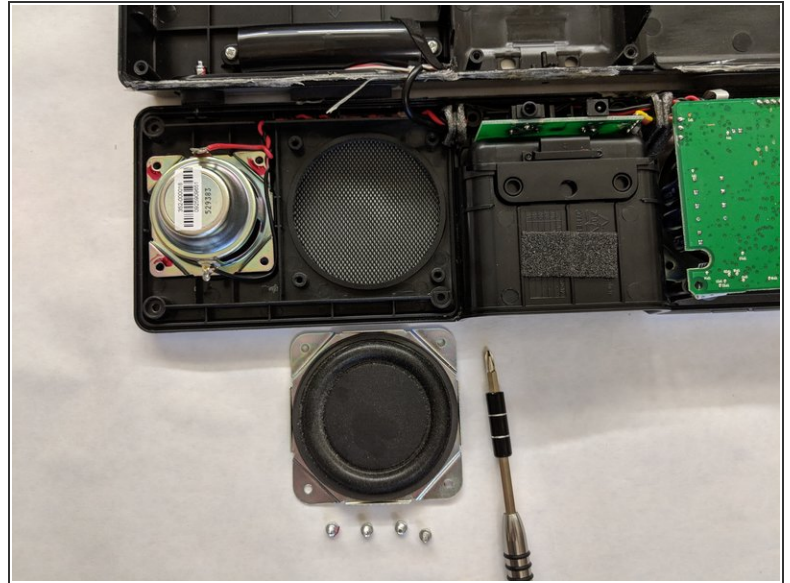
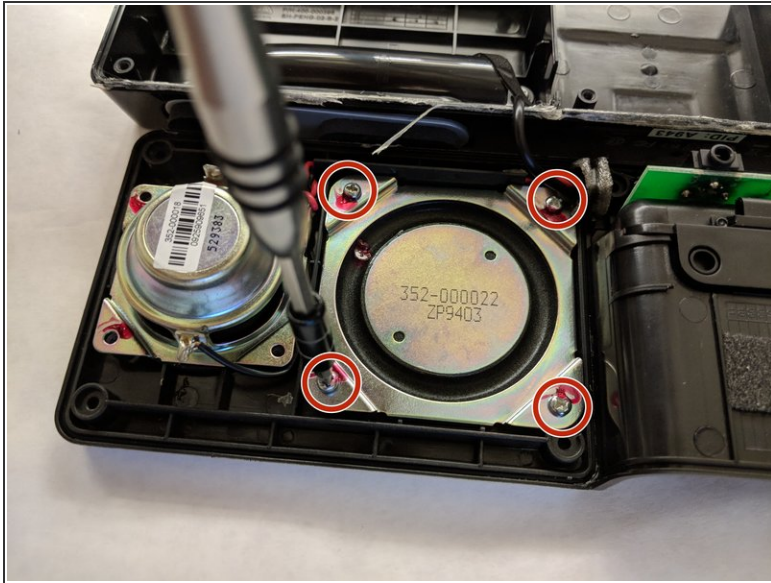
- To remove the plastic cover. You want to use the plastic opener and starting with corners.
- Then insert the metal spudger in the opening and slowly move the metal spudger along all sides of the cover.
 - ⚠ **Caution:** Metal spudger can damage the internal components of the device such as the motherboard. Make sure to use it carefully in order to avoid any unnecessary damages.
- Make sure the metal spudger is inserted deep enough as the cover is glued to the device.
 - ⚠ Carefully remove the cover as it can be very fragile

Step 2



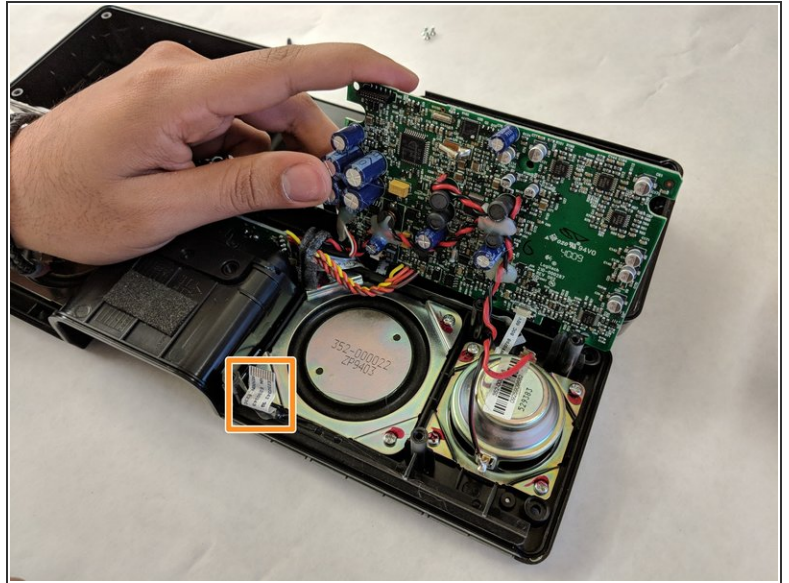
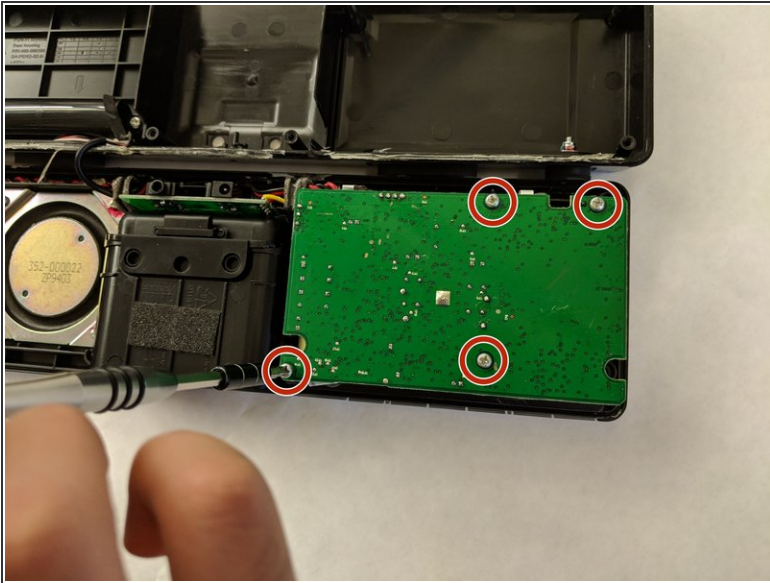
- Remove eight 10.5 mm Phillips #1 screws from the cover.
- Insert a metal spurger at the corner to help loosen the cover.
 - ⓘ There is still glue sticking the front cover and the back cover together.
- Starting with corners, lift up the cover slowly and carefully.
 - ⚠ Do not pull too hard when removing the cover. There are wires connecting between the battery and the circuit board.

Step 3



- Identify the speaker cover, and remove four 4.5 mm Phillips #1 screws.
- Lift up the cone. It should be removed very easily by hand.

Step 4



- Remove four 5.2mm Phillips #1 screws that are securing the circuit board.
- Unplug the connecting wire from the circuit board. Carefully lift up the circuit board.
- Same as step 3, remove four 4.5 mm Phillips #1 screws from the speaker cone.

To reassemble your device, follow these instructions in reverse order.