



Vanmoof No 3 Light Battery Replacement

Replace the rechargeable batteries in a Vanmoof Bike front or rear light,

Written By: Martin Hampton



INTRODUCTION

Vanmoof make the world's most stylish urban bike with inbuilt solar powered lights. After a few years the light's NiCad batteries won't hold their charge so it's time to replace.

You can buy replacements but Vanmoof won't ship to many countries (like Australia) so you'll need to fix them eventually.

The most difficult part is getting the batteries

- You'll need two "2/3 AAA" NiCad batteries per light
- Get the ones with solder tabs
- Get 4 - for the front and rear lights
- ebay is cheapest - these are the ones that I brought <https://www.ebay.com.au/itm/4-pcs-2-3-AA...>

Batteries were less than \$4 for four, so it's of course much cheaper to fix than replace - and better for the environment.



TOOLS:

- [Soldering Iron](#) (1)



PARTS:

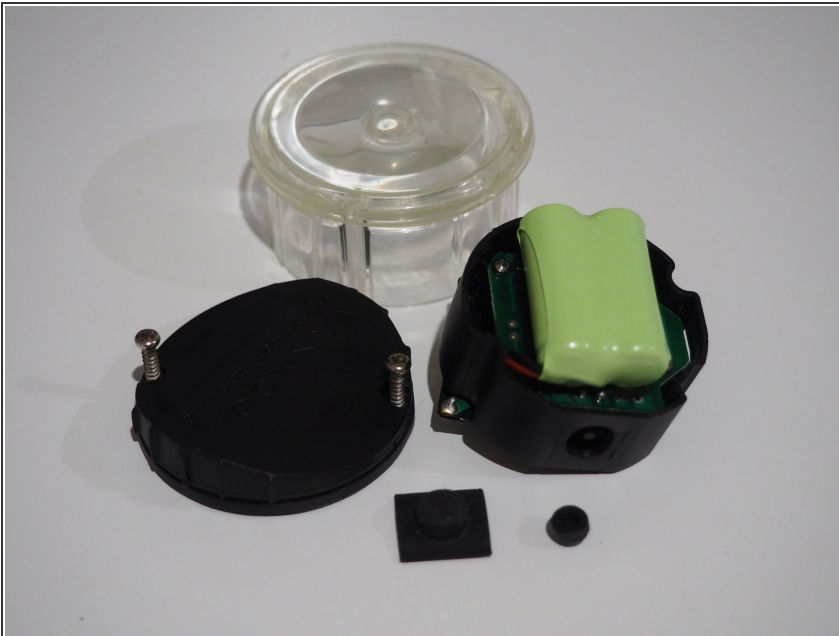
- [Two 2/3 AAA NiCad rechargeable batteries](#) (1)

Step 1 — Battery



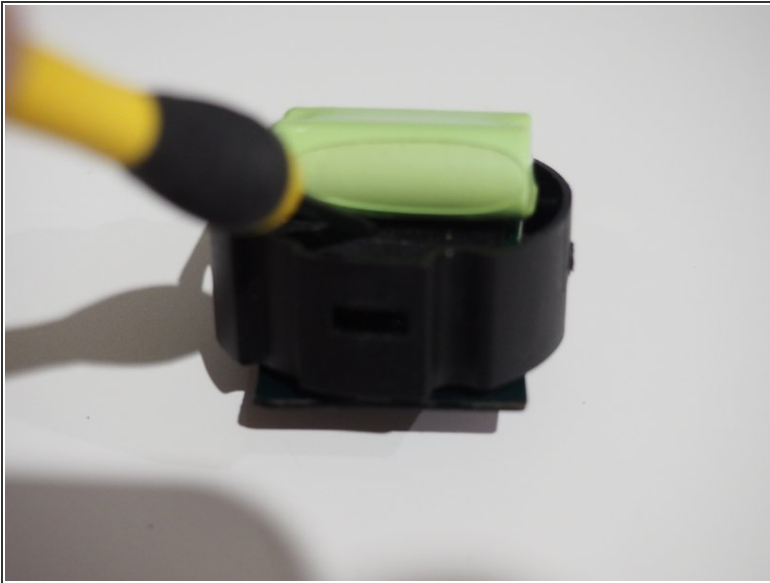
- Buy two, "2/3" AAA NiCad rechargeable batteries. Better still get four so you can replace the batteries in both lights.
- Get the batteries with solder tabs

Step 2 — Disassemble the light



- Nothing to it really - just remove the 2 cross point screws

Step 3 — Remove the battery



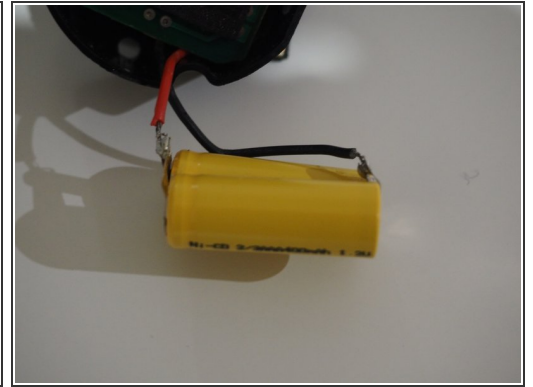
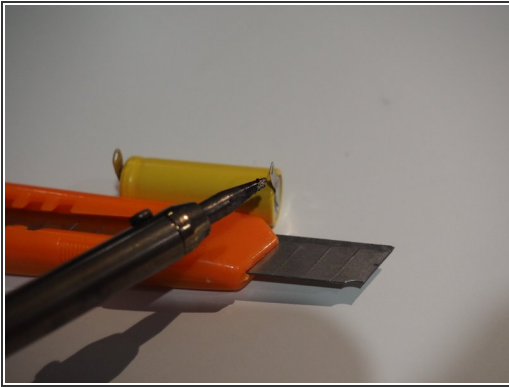
- Use a flat blade screw driver to pull the battery from the adhesive tape.
- Remove the heat shrink plastic joining the batteries

Step 4 — Unsolder the battery



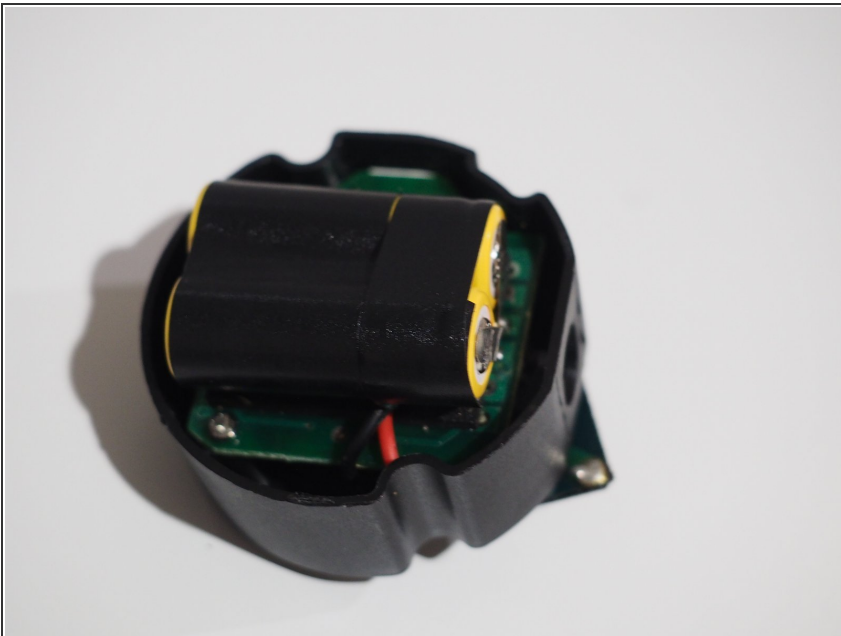
- Unsolder the wires

Step 5 — Solder the new battery



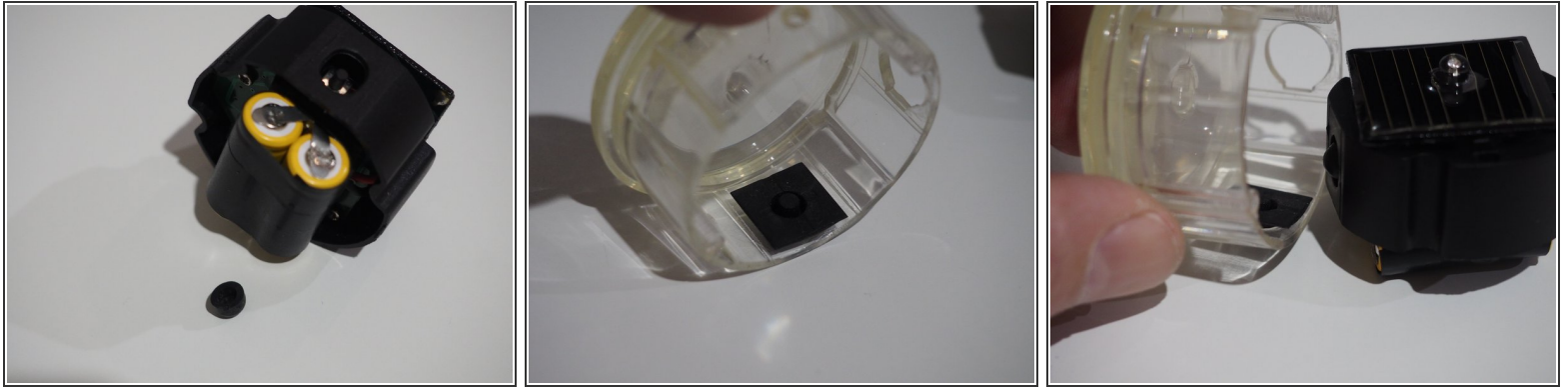
- Tin the battery tabs
- Join together with tape. You'll remove this later. Both +ve ends are joined
- The red wire goes on the end of the battery that has a ridge.

Step 6 — Join the batteries



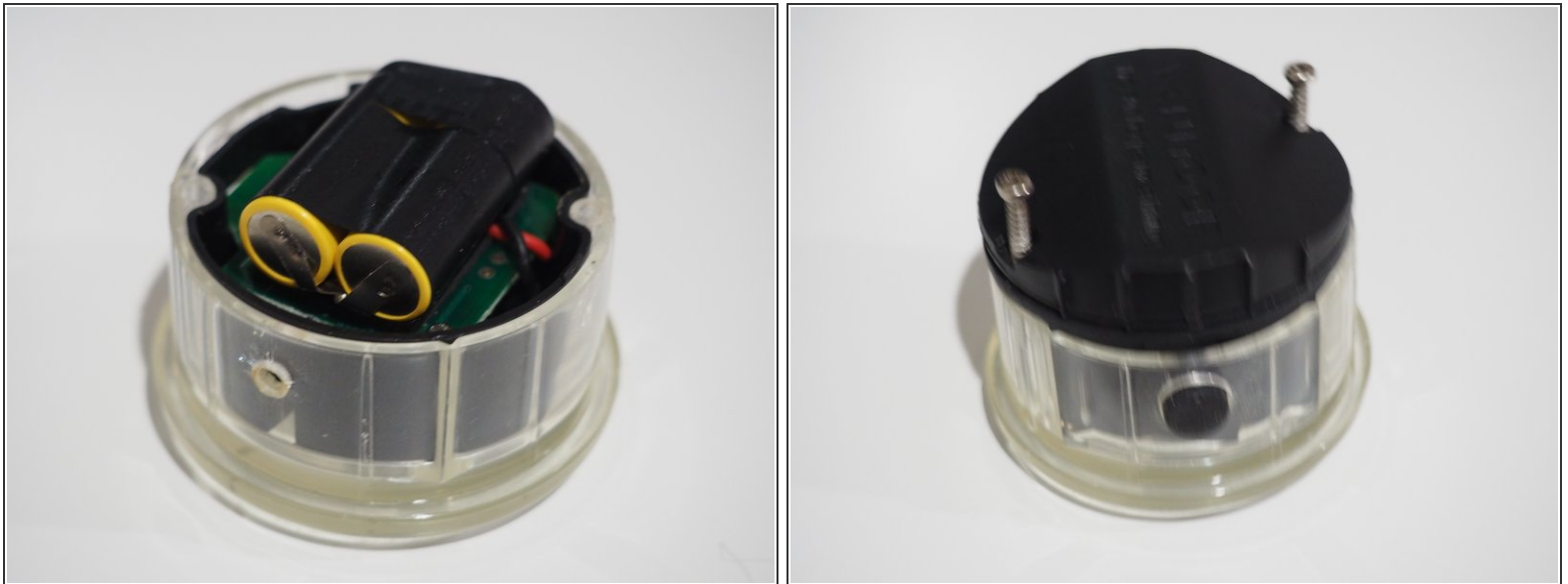
- Remove the temporary tape
- Fold the tabs inwards
- Cover with 2 pieces of insulation tape. The wires will come out of the middle, between the pieces of tape

Step 7 — Reassemble



- Put the small black cup back on the switch. The dome goes outwards.
- Put the outer switch in the lense. It goes in the smaller hole
- The black body will be flush when it's pushed together.

Step 8 — Reassemble 2



- Test the light turns on
- Screw the back plate to the lense.

To reassemble your device, follow these instructions in reverse order.

This document was generated on 2020-12-02 08:20:22 PM (MST).

