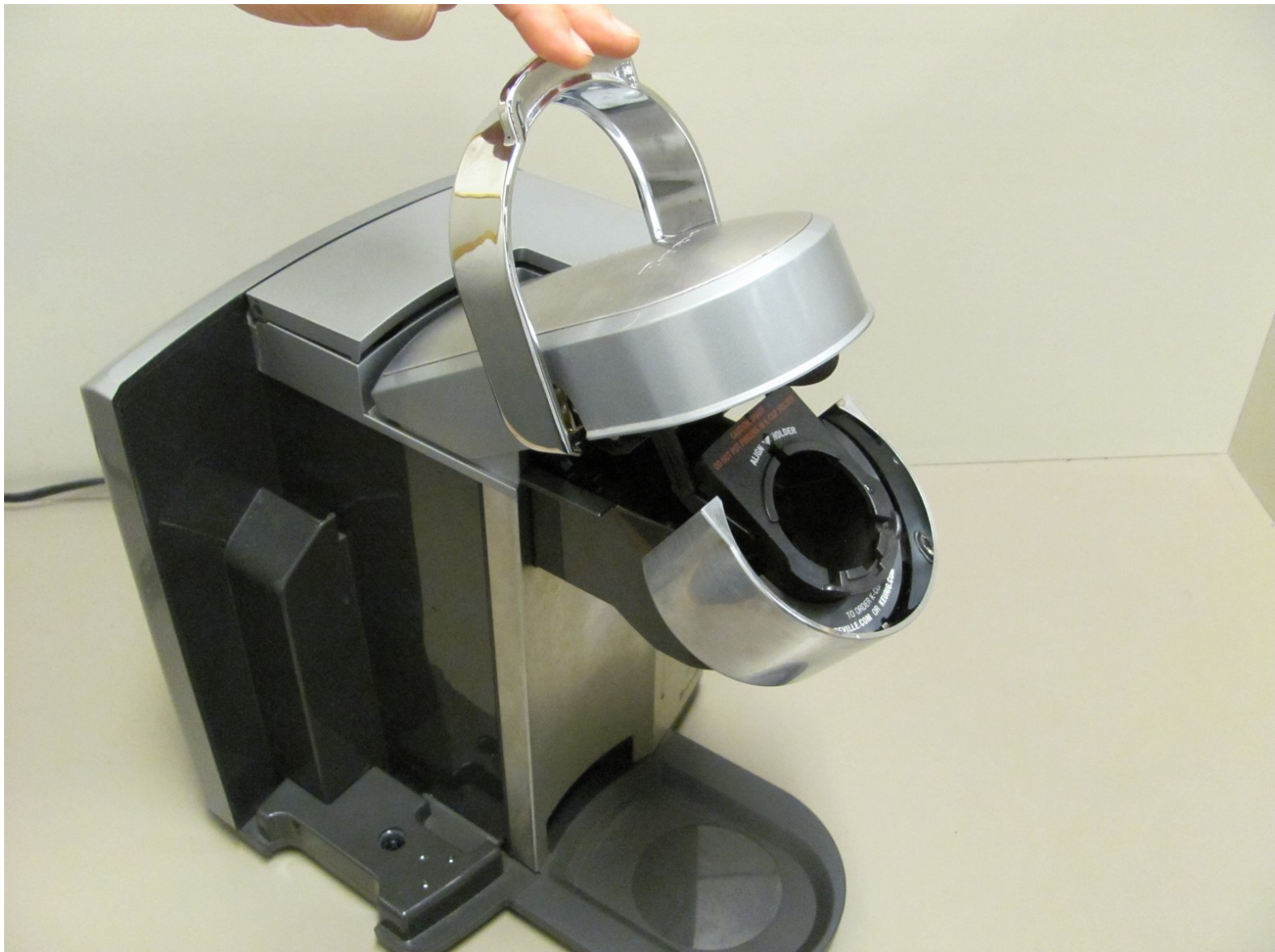




# Disassembling Breville BKC600XL Coffee Brewer Head

This guide explains how to disassemble the Breville BKC600XL coffee brewer head.

Written By: Antonio



---

## INTRODUCTION

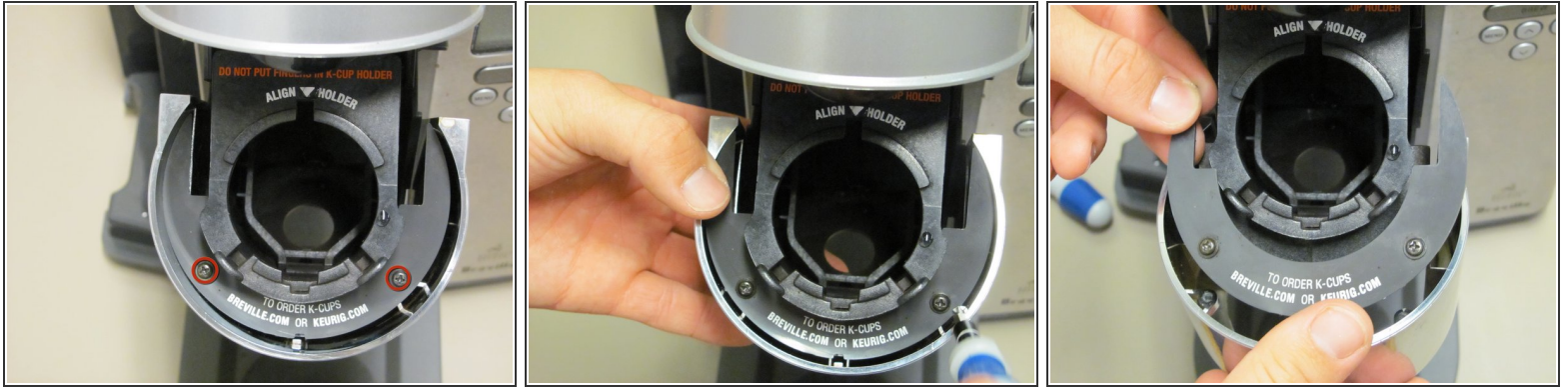
This guide explains how to disassemble the Breville BKC600XL coffee brewer head.

---

### TOOLS:

- [1.5mm Hex Screwdriver](#) (1)
  - [Phillips #0 Screwdriver](#) (1)
-

## Step 1 — "Bottom" Black Shell Piece



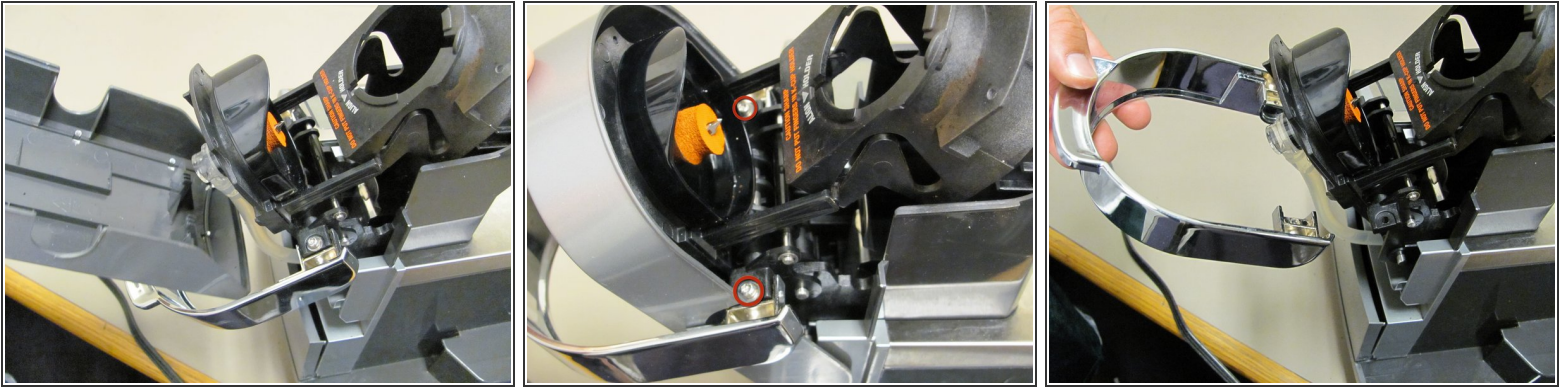
- Remove the two 12mm black Phillips screws using a Phillips #0 screwdriver.
- ☞ Reminder for reassembly; This bottom piece is first to be screwed back on.

## Step 2 — "Top" Black Shell Piece



- Remove the two 12mm Phillips screws using a Phillips #0 screwdriver.

### Step 3 — Silver Casing



- Remove the grey plastic casing.
- Remove the two 12mm hexagonal screws using a 1.5mm hex screwdriver.

To reassemble your device, follow these instructions in reverse order.