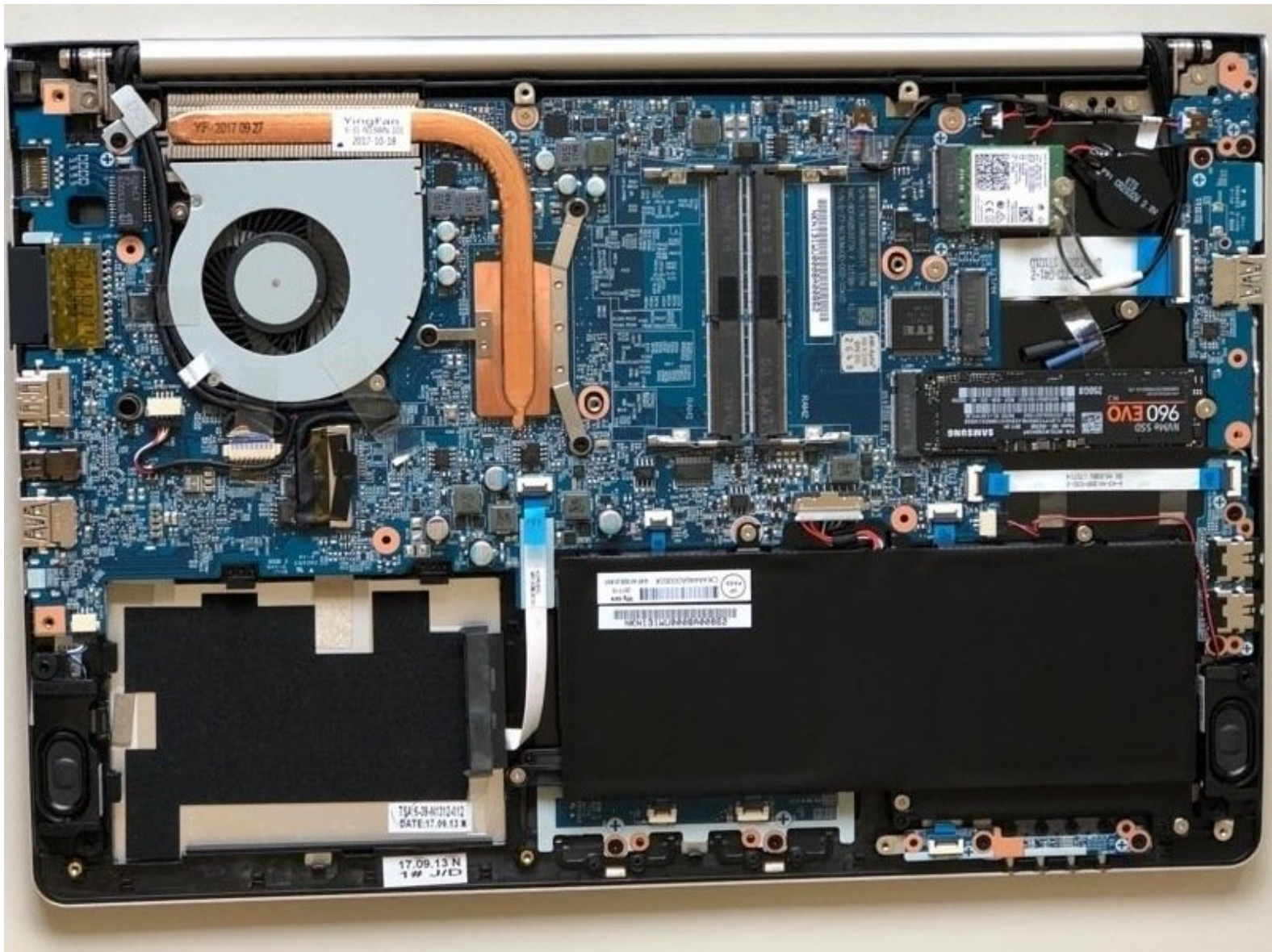




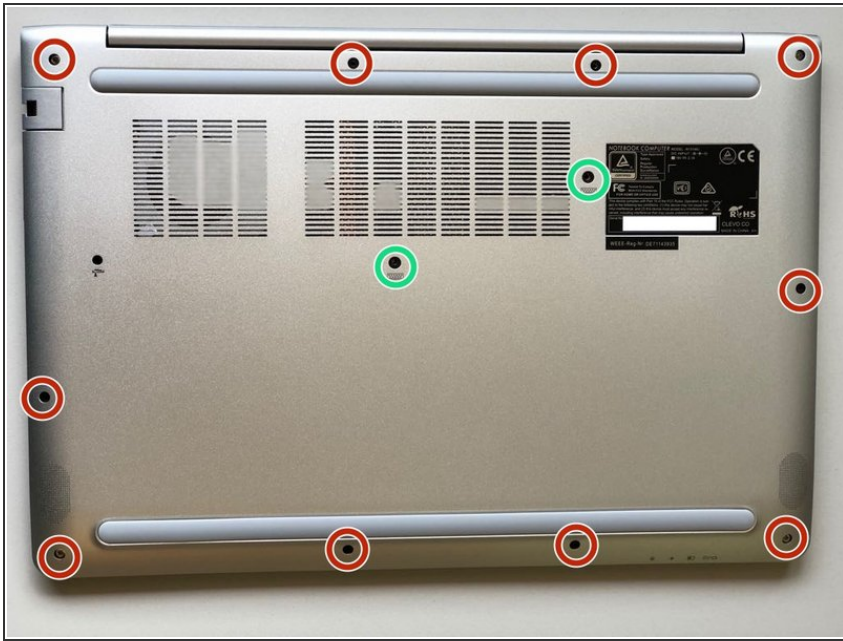
# N131WU Laptop Access to main components

To access the main components of this laptop

Written By: Felice Suglia



## Step 1 — Remove the Screws



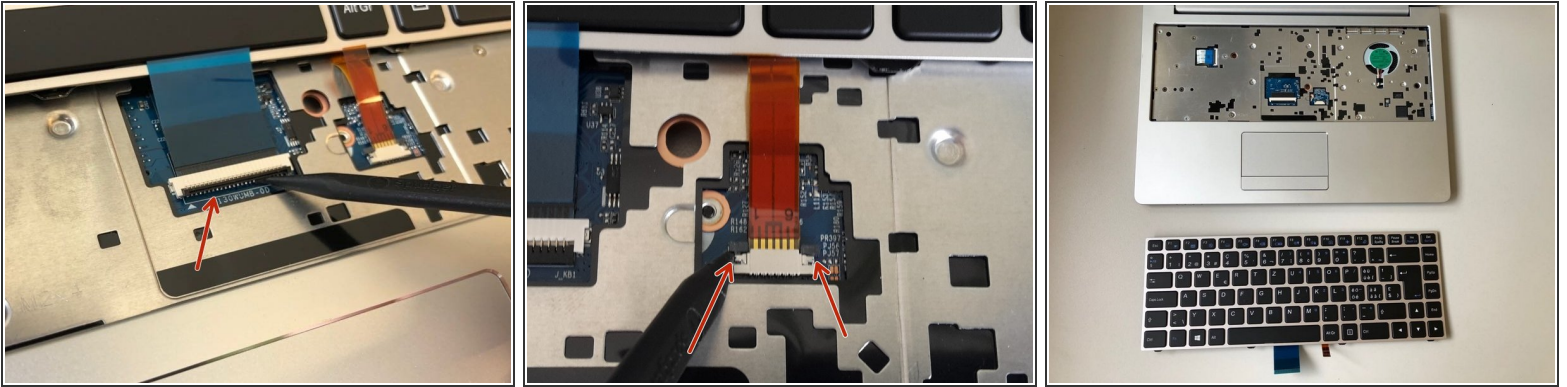
- Remove the case screws (red) and the keyboard screws (green).
- ⓘ Be sure not to lose these screws. You will need them to reassemble your laptop.

## Step 2 — Remove the Keyboard



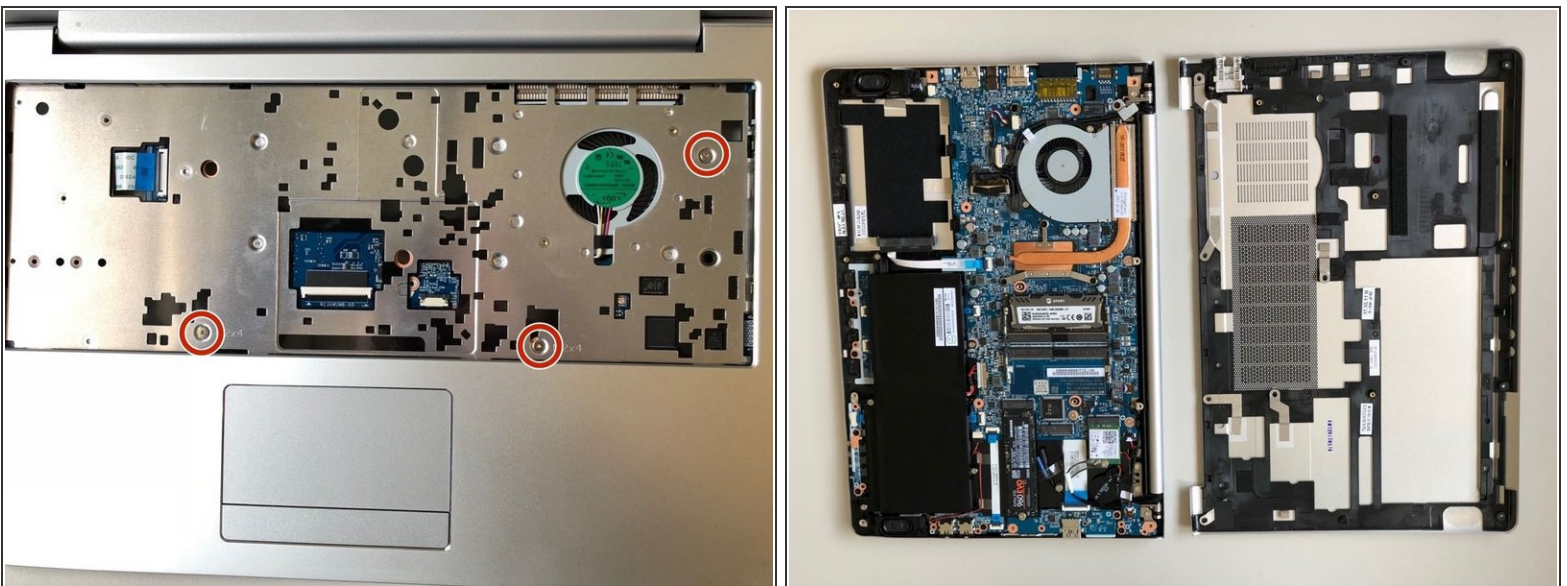
- Using the hole provided under the case (see picture), push the keyboard out using a thin screwdriver or some other solid object.

### Step 3 — Remove Keyboard Connections



- (Blue Cable) Push up on the thin black portion on the connector and gently pull out the blue ribbon cable until it comes out.
- (Orange Cable) Remove the orange cable by sliding the gray part of the connector towards the screen, then gently pull on the ribbon cable.

### Step 4 — Remove the upper screws



- Unscrew the three screws that were under the keyboard. Be sure to hold onto these.
- After these are removed, you can now remove the lower part of the case from the rest of the computer.

To reassemble your laptop, follow the instructions in reverse.