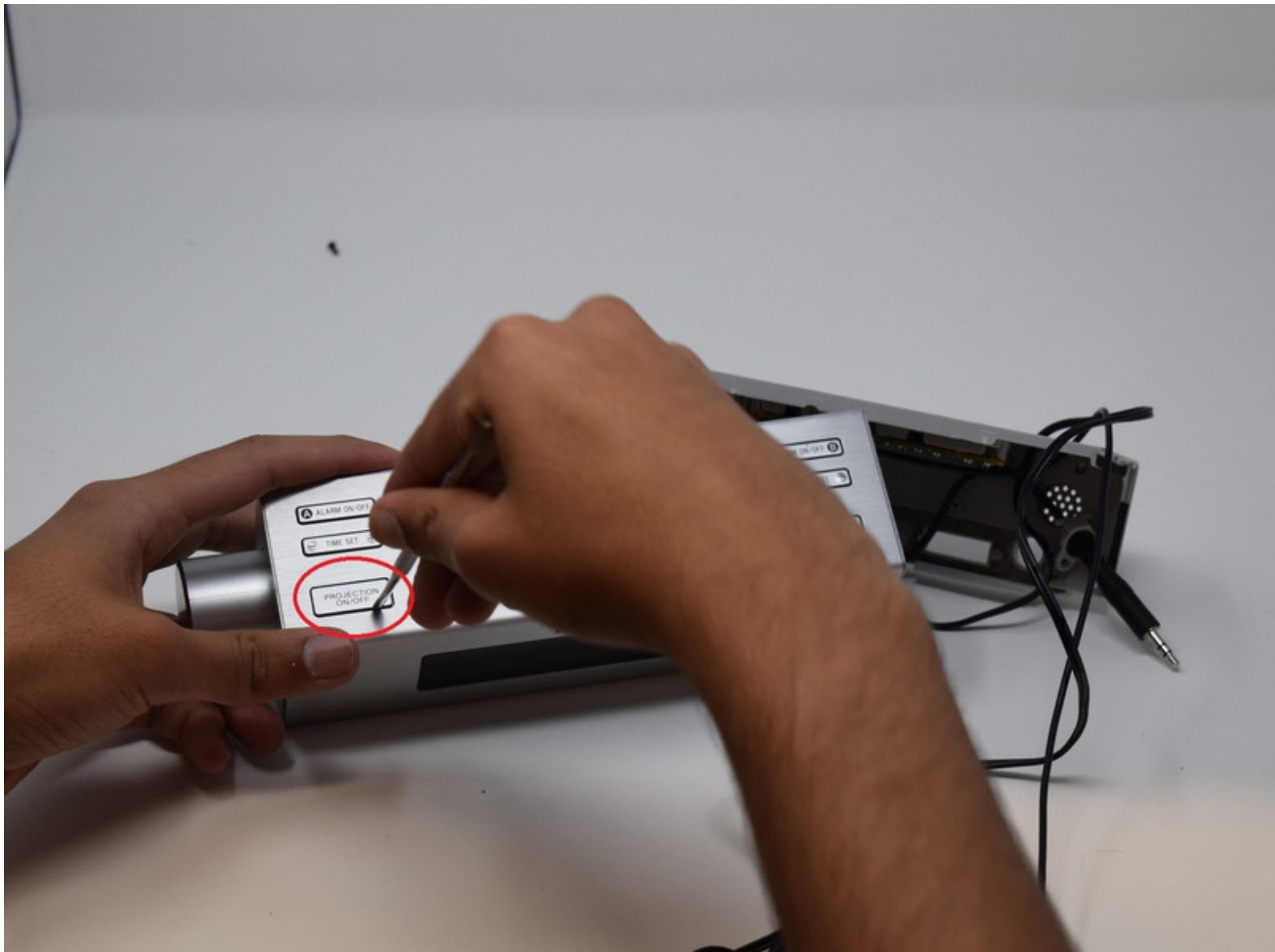




# Sony Dream Machine ICF-C717PJ Buttons Replacement

This guide is intended to help users solve problems related to faulty/inactive buttons.

Written By: Nimo Ahmed



## INTRODUCTION

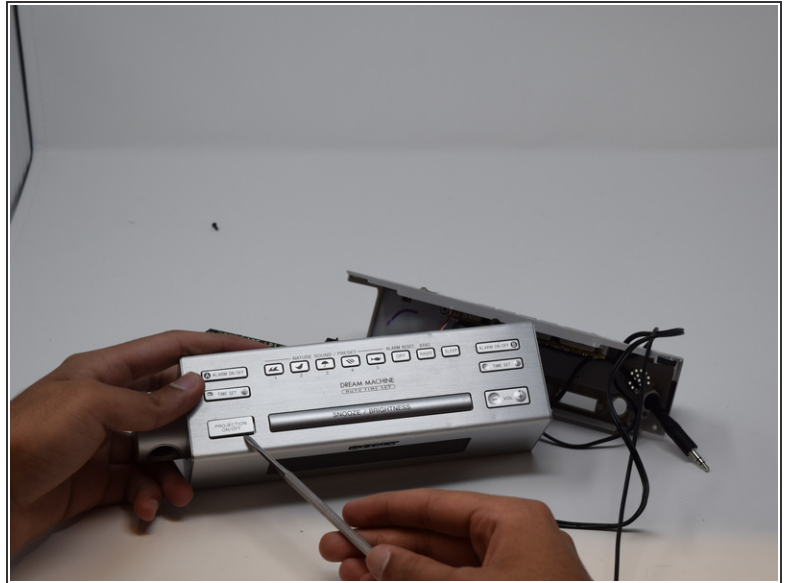
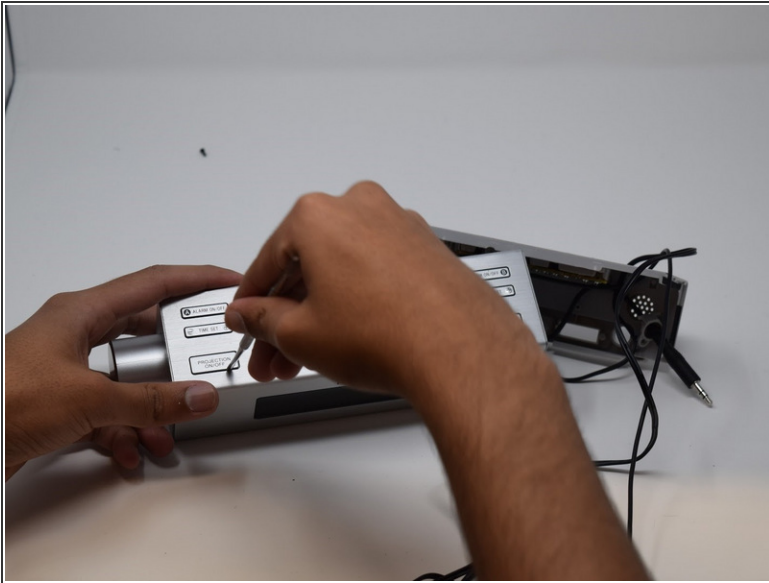
If the buttons on the device do not work, refer to this guide. Please see the Sony Dream Machine ICF-C717PJ Troubleshooting page: [Sony Dream Machine ICF-C717PJ](#) to eliminate other possible issues before tinkering with the buttons. This guide will help to assist you in fixing the buttons on the Sony Dream Machine ICF-C717PJ.

---

### TOOLS:

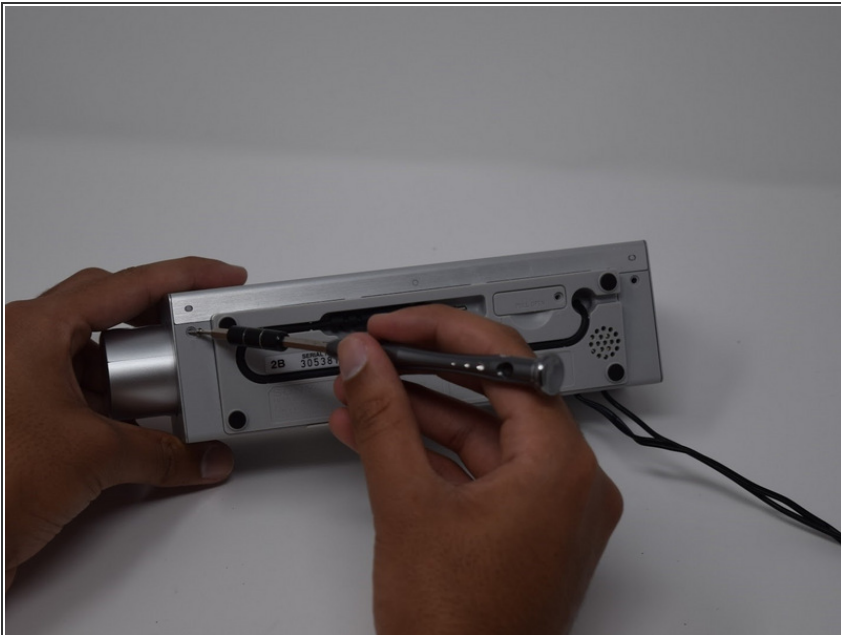
- [Phillips #0 Screwdriver](#) (1)
-

## Step 1 — Buttons



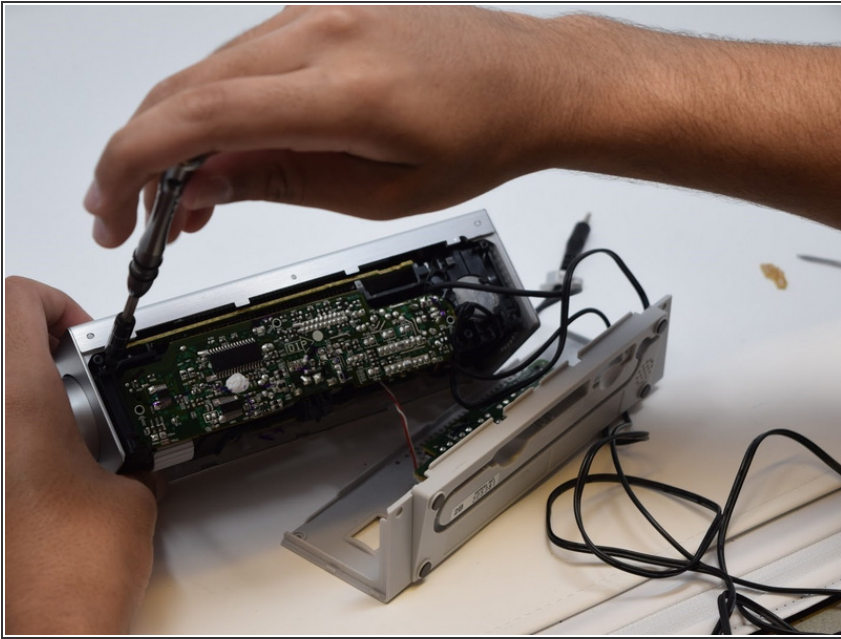
- Gently use a flat head screwdriver in the gaps between the button and device body to loosen them from their positions.

## Step 2



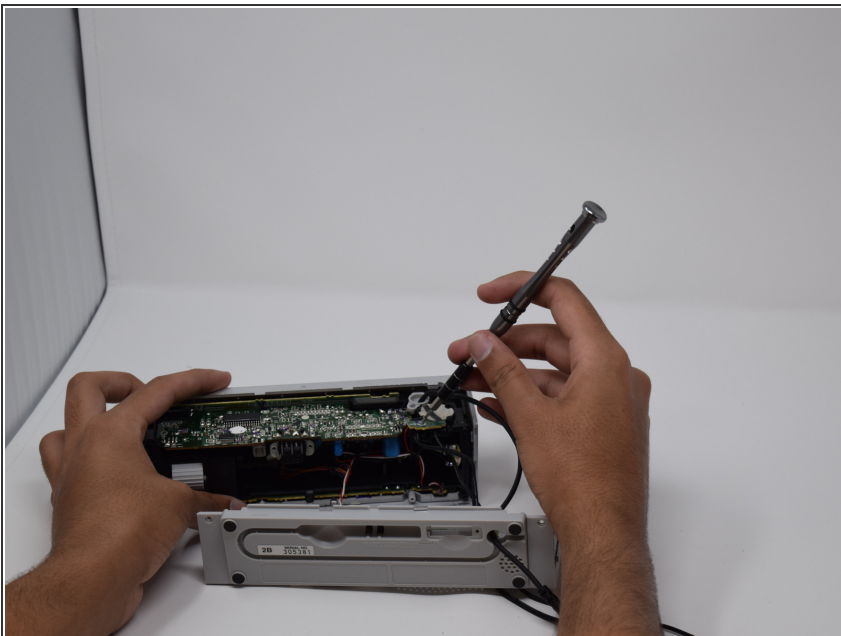
- Remove the back cover of the device by unscrewing all screws and prying it open.

### Step 3



- Using a small tool, push the buttons outward by pressing on them firmly until they pop out of their place.

### Step 4



- Insert the new button from the inside of the device, pushing it towards the front with gentle force until it locks into place.

To reassemble your device, follow these instructions in reverse order.