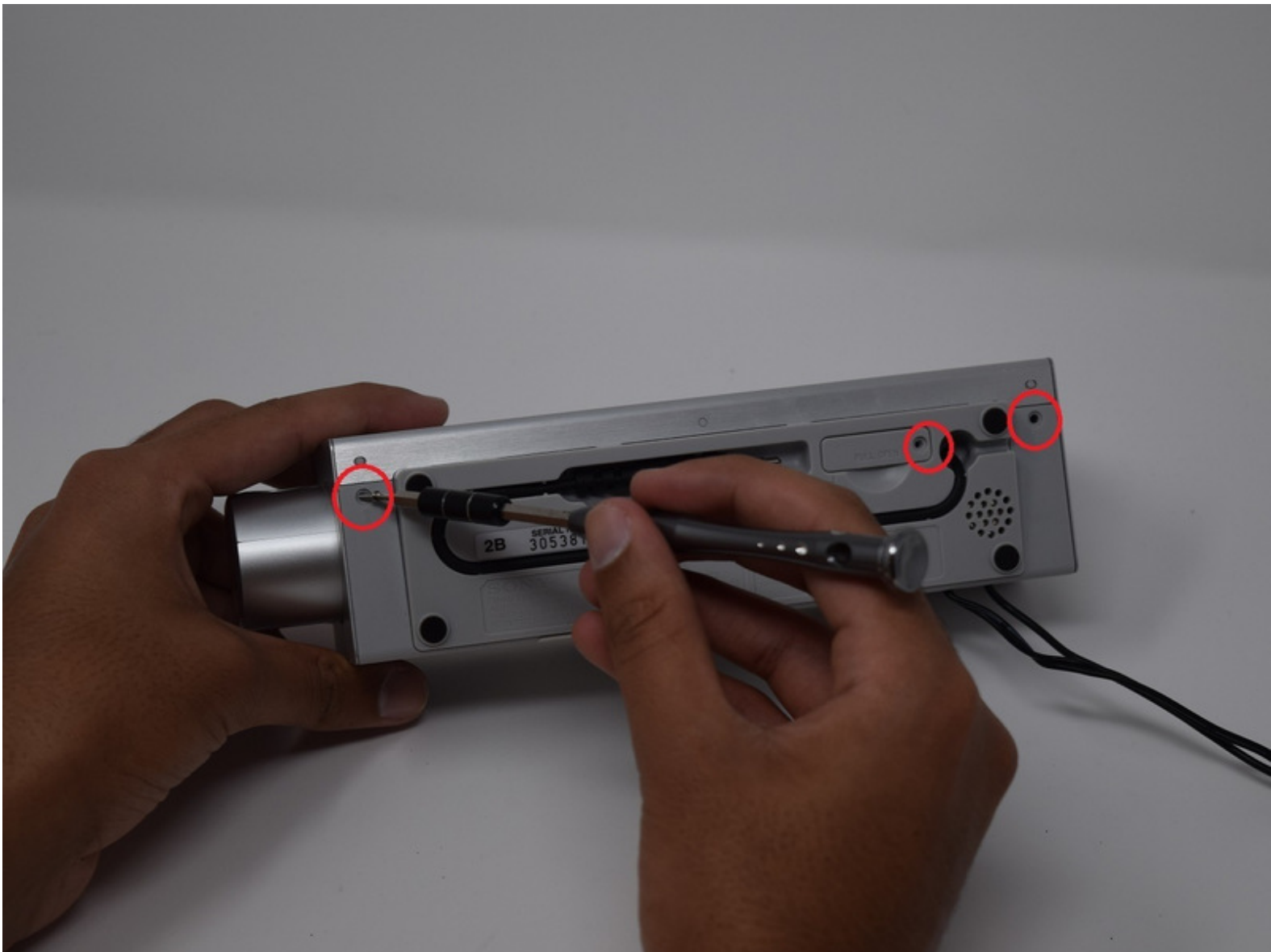




# Projector Adjustment

This guide is intended to help users resolve issues with the projector.

Written By: Gurleen Powar



## INTRODUCTION

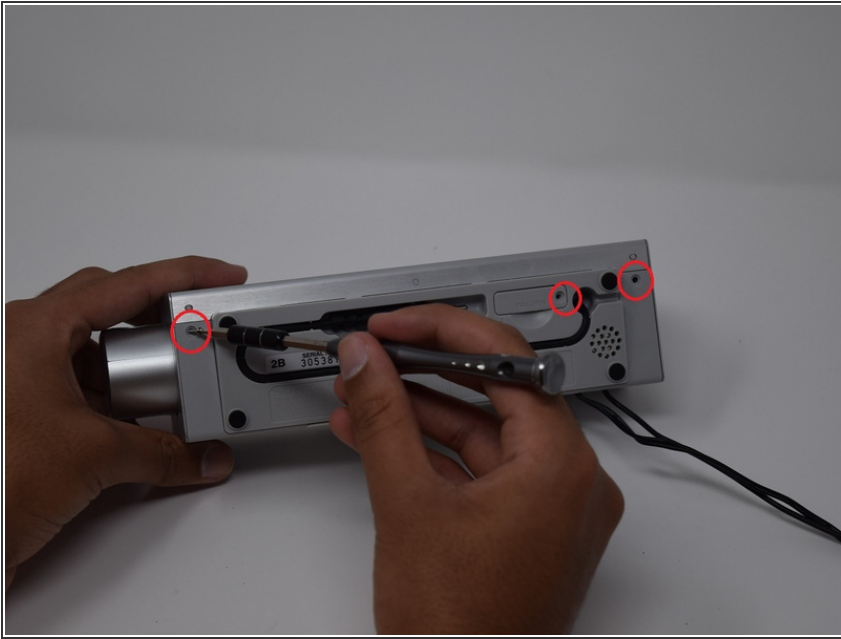
This guide is intended to help users resolve issues with the projector. Please see the Sony Dream Machine ICF-C717PJ Troubleshooting page: [Sony Dream Machine ICF-C717PJ](#) to eliminate other possible issues before you begin. This guide will help assist you in repair the issues impacting the clarity of the projection display.

---

### TOOLS:

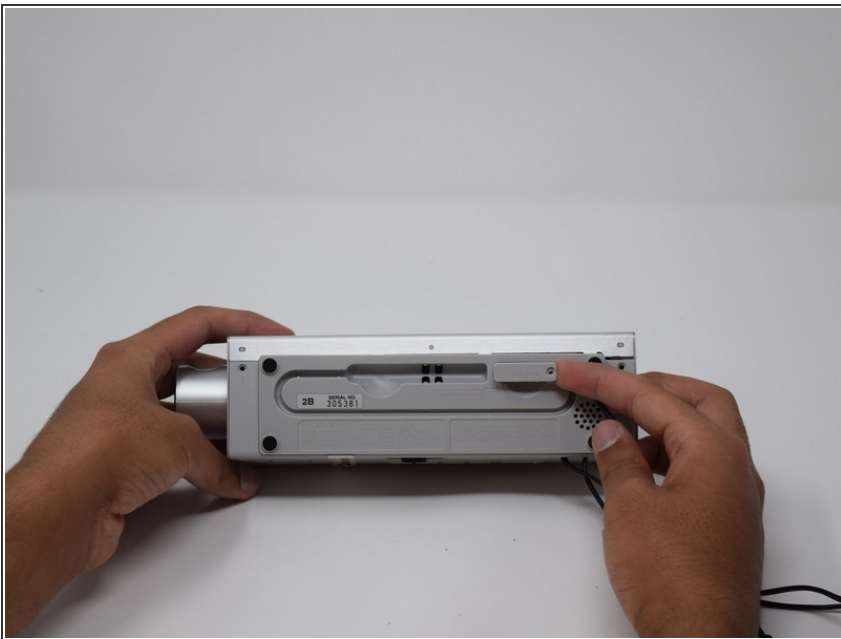
- [Phillips #0 Screwdriver](#) (1)
-

## Step 1 — Projector Adjustment



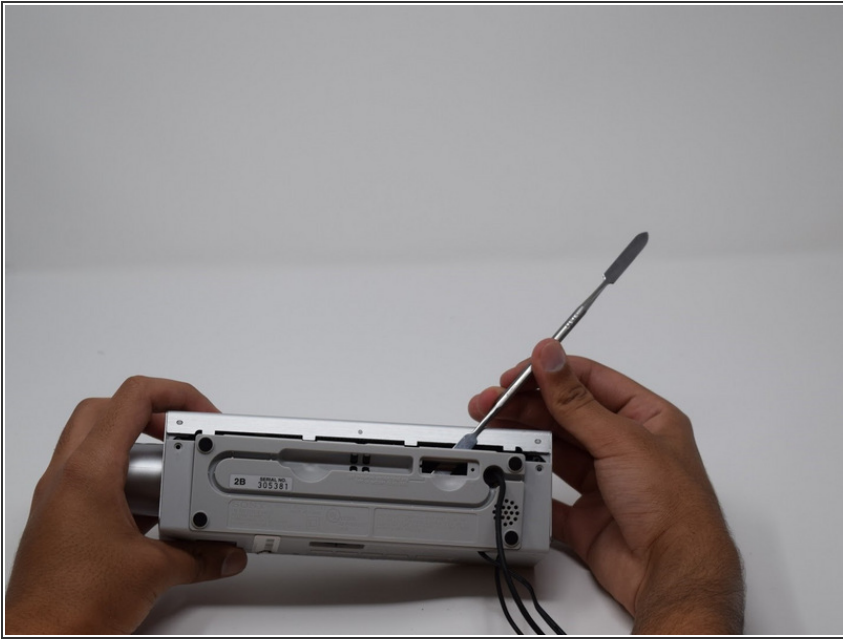
- Remove the screw from the backside cover of the Sony Dream Machine with a Phillips Screwdriver.

## Step 2



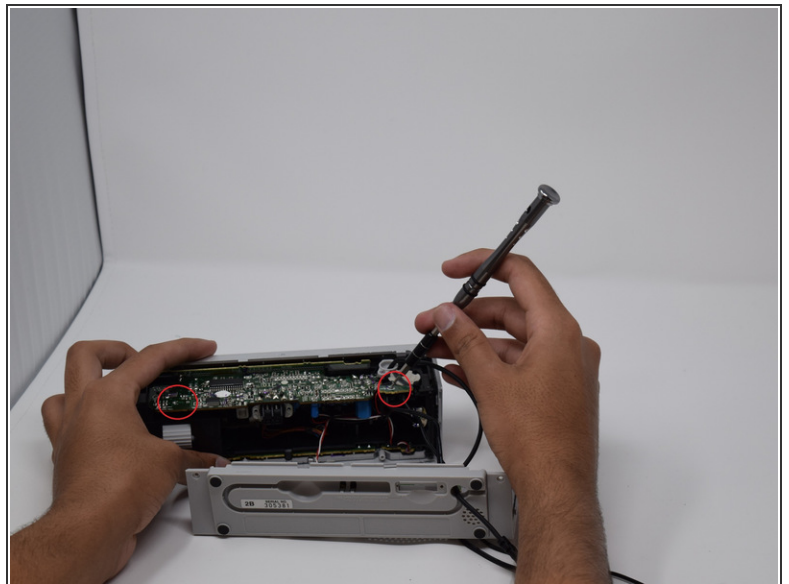
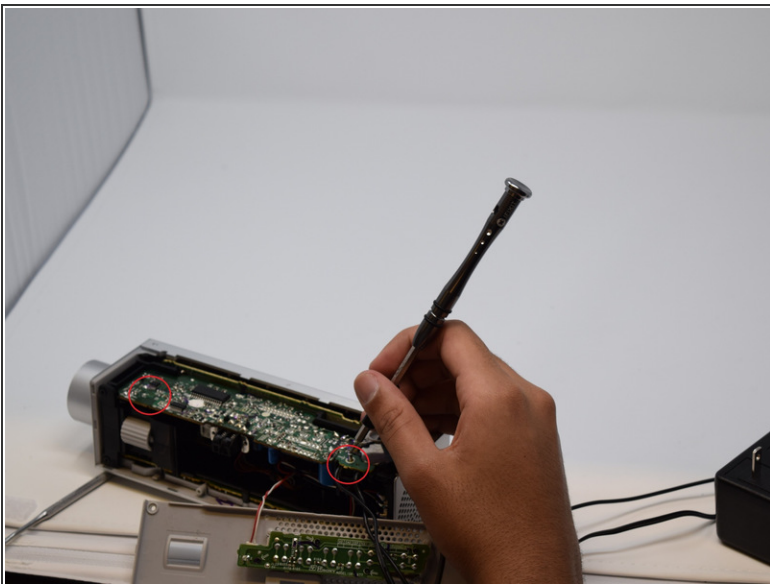
- Remove the battery cover tab.

### Step 3



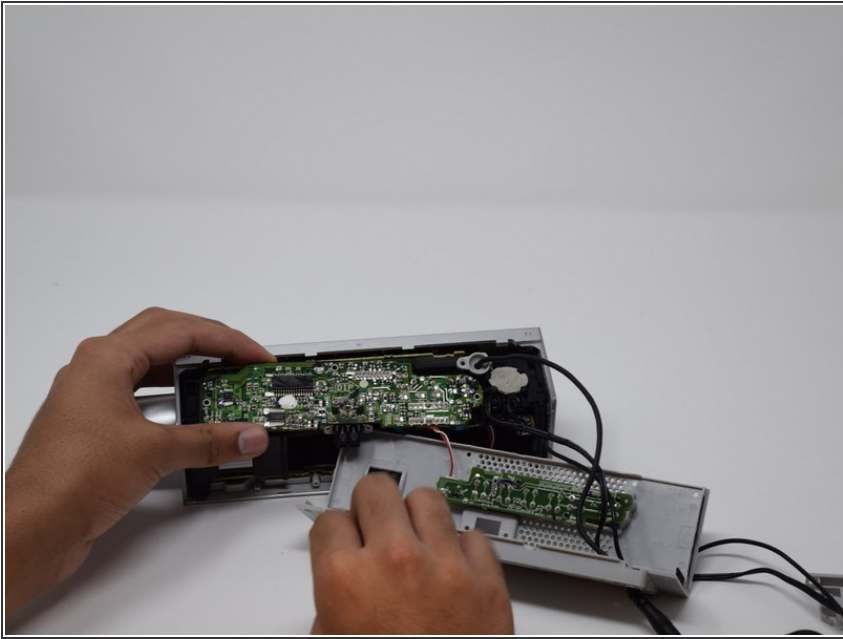
- Remove the backside cover of the device, pry open with a screwdriver if necessary.

### Step 4



- Remove screws from motherboard, in order to detach it.

## Step 5



- Pull motherboard out with your hands.

## Step 6



- Remove paper tab from its slot and re-insert it.