



# Motorola W490 SIM Card Replacement

This guide will help you locate, repair, or replace the SIM card.

Written By: Will Edwards



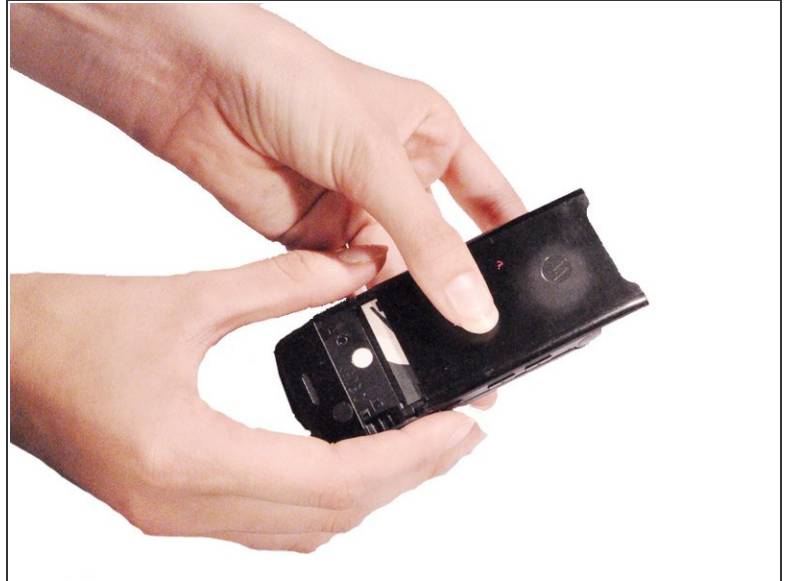
**TOOLS:**

- [iFixit Opening Tools](#) (1)

**PARTS:**

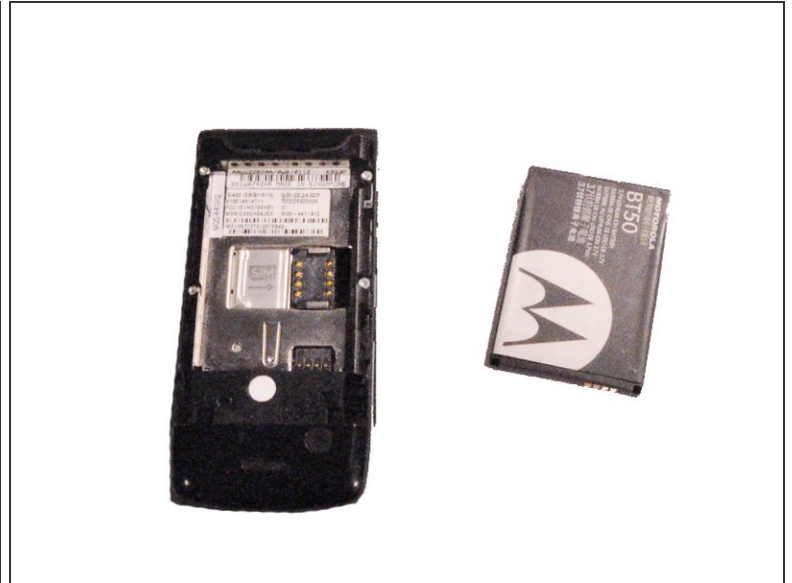
- [SIM Card](#) (1)
- [Motorola W490 Phone Case](#) (1)

## Step 1 — Phone Casing



- Pick up the cell phone with the back facing towards you.
- Push down on the silver tab located at the top center of the back of the Motorola W490 cellphone.
- While pushing down on the silver tab, slide the back cover towards the silver tab. Remove the back cover.

## Step 2 — Battery



- Remove the battery by pulling the battery from the top corners labeled "Pull Here" located on either side of the top of the battery.
- Set the battery aside.

## Step 3 — SIM Card



- Use a plastic opening tool to make a gap between the SIM card and the phone.
- Use your thumb and index finger to pull the SIM card from the phone.

To reassemble your device, follow these instructions in reverse order.