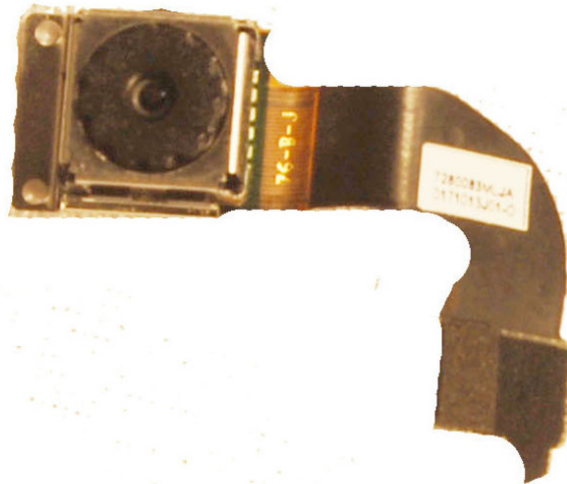




Motorola W490 Camera Replacement

This guide allows the user to safely install the camera.

Written By: Will Edwards



 **TOOLS:**

- [T5 Torx Screwdriver](#) (1)
 - [iFixit Opening Tools](#) (1)
 - [Tweezers](#) (1)
-

Step 1 — Camera



- Open the phone so that the keypad and screen are facing up.

Step 2



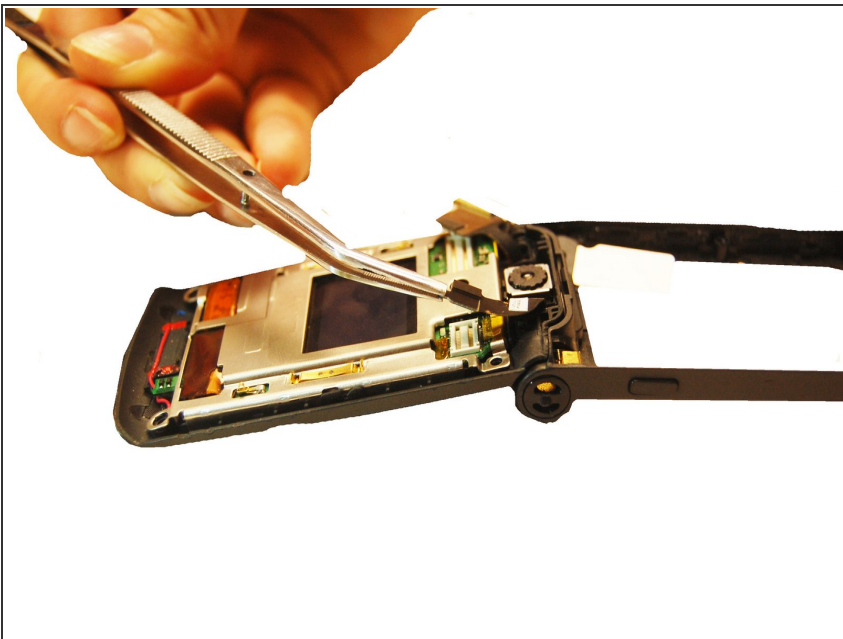
- Use the blue plastic opening tool to pry off all four of the rubber stickers from the upper inside face.

Step 3



- Use the Torx T5 screw driver head to remove the four 5.4 mm screws from the upper inner face.

Step 4



- Once the screws and upper casing have been removed, locate where the camera attaches to the upper circuit board and detach it using a pair of tweezers.

To reassemble your device, follow these instructions in reverse order.

This document was last generated on 2019-07-19 07:24:43 AM.