



# Disassembling Black and Decker BL3000S Blender Base

Disassemble blender base.

Written By: Andrew



---

## INTRODUCTION

As a first step to clean, maintain, or install new parts (excluding the blender blades) for the Black and Decker BL3000S the blender base must be taken apart. This guide will provide step by step instructions of how to perform this task.

---

### TOOLS:

- [Phillips #1 Screwdriver](#) (1)
  - [Flathead 3/32" or 2.5 mm Screwdriver](#) (1)
  - [TA20 Screwdriver](#) (1)
-

## Step 1 — Blender Base



- i** Before disassembling the blender base, make sure the blender is disconnected from any power outlet.
- Lift the jar straight up from the base without tilting the jar.

## Step 2



- Remove the top three 1/4 inch base screws using a Philip's head screwdriver.

### Step 3



- Remove the two base leg covers next to the power cord using pliers or a flat-head screwdriver.

**(i)** This provides access to the base screws beneath.

### Step 4

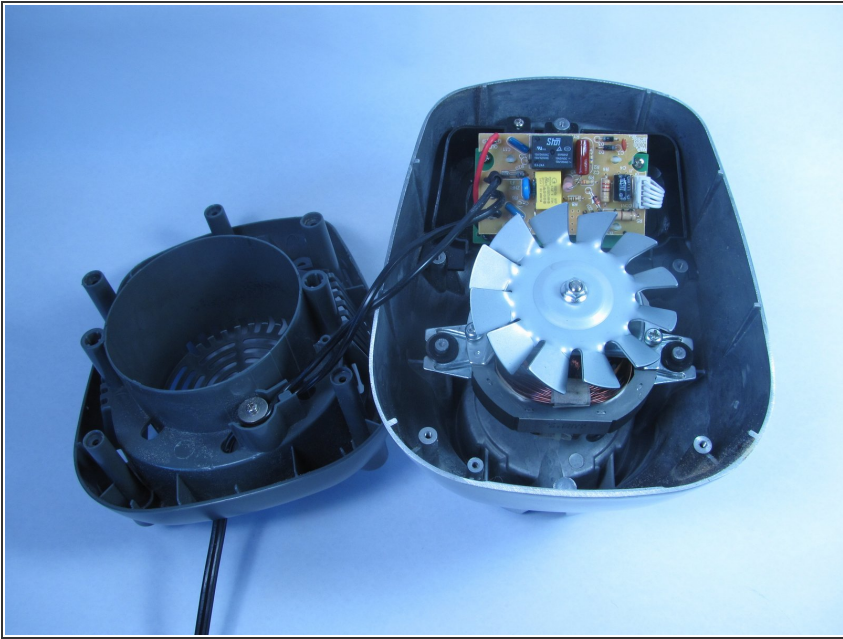


- Remove the following screws that secure the top and bottom halves of the base.
  - One 1/4 Phillips screw
  - One TA-20 screw

**(i)** Both screwdrivers must have a minimum of a three inch shank (length).

**(i)** Screwdrivers with extenders will not fit down the access holes.

## Step 5



- Lift the top half of the base from the bottom half of the base to reveal the internal mechanism.

To reassemble your device, follow these instructions in reverse order.