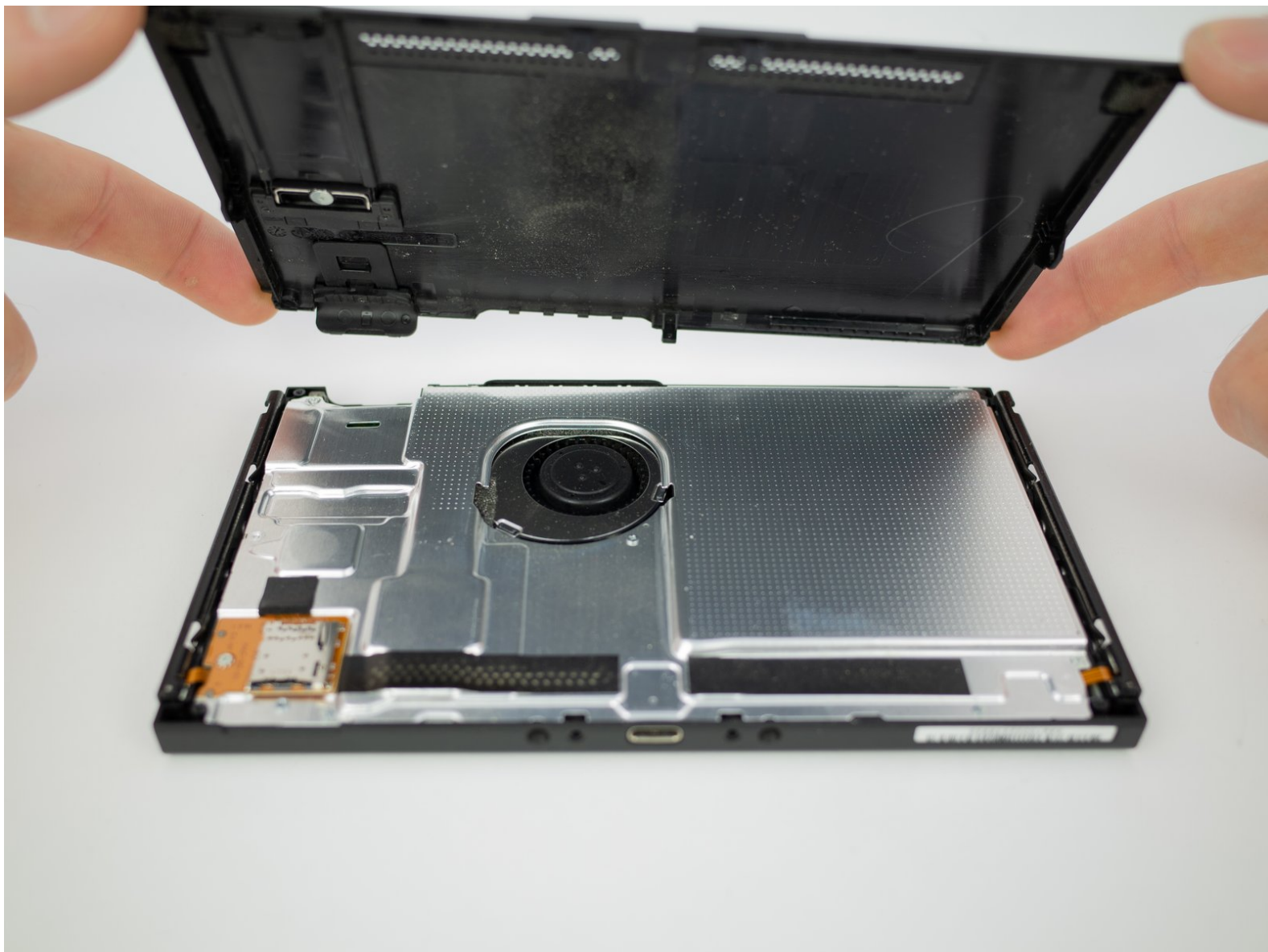




# Nintendo Switch Rear Panel Replacement

A free guide showing how to replace or remove the rear panel on a Nintendo Switch gaming console.

Written By: Blake Klein



## INTRODUCTION

Follow this guide to remove the rear panel from a Nintendo Switch.

A single screw is hidden underneath the kickstand.



### TOOLS:

- [Tri-point Y00 Screwdriver](#) (1)
- [JIS #000 Screwdriver](#) (1)



### PARTS:

- [Nintendo Switch Rear Panel](#) (1)

## Step 1 — Rear Panel



- Remove the four 6.3 mm Tri-point Y00 screws from the rear panel.

## Step 2



- Remove the single 6.1 mm Phillips #000 screw from underneath the kickstand.

### Step 3



- Remove the two 2.7 mm Phillips #000 screws from the bottom of the device.

### Step 4



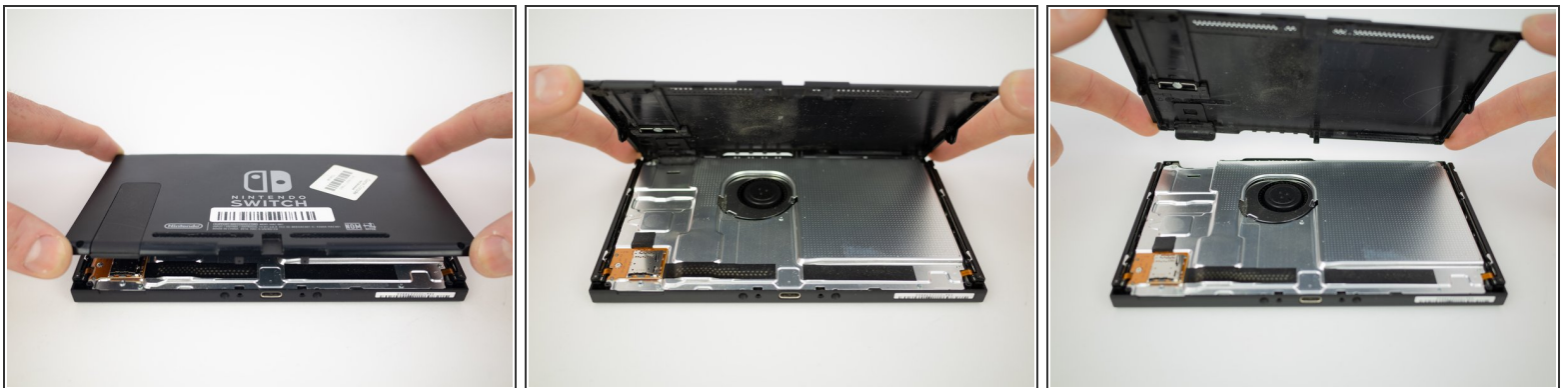
- Remove the single 2.7 mm Phillips #000 screw from the top of the device.

## Step 5



- Remove the single 3.8 mm Phillips #000 screw from the right Joy-Con rail.
- Remove the single 3.8 mm Phillips #000 screw from the left Joy-Con rail.

## Step 6



- Pull the rear panel up and off of the device.

To reassemble your device, follow these instructions in reverse order.