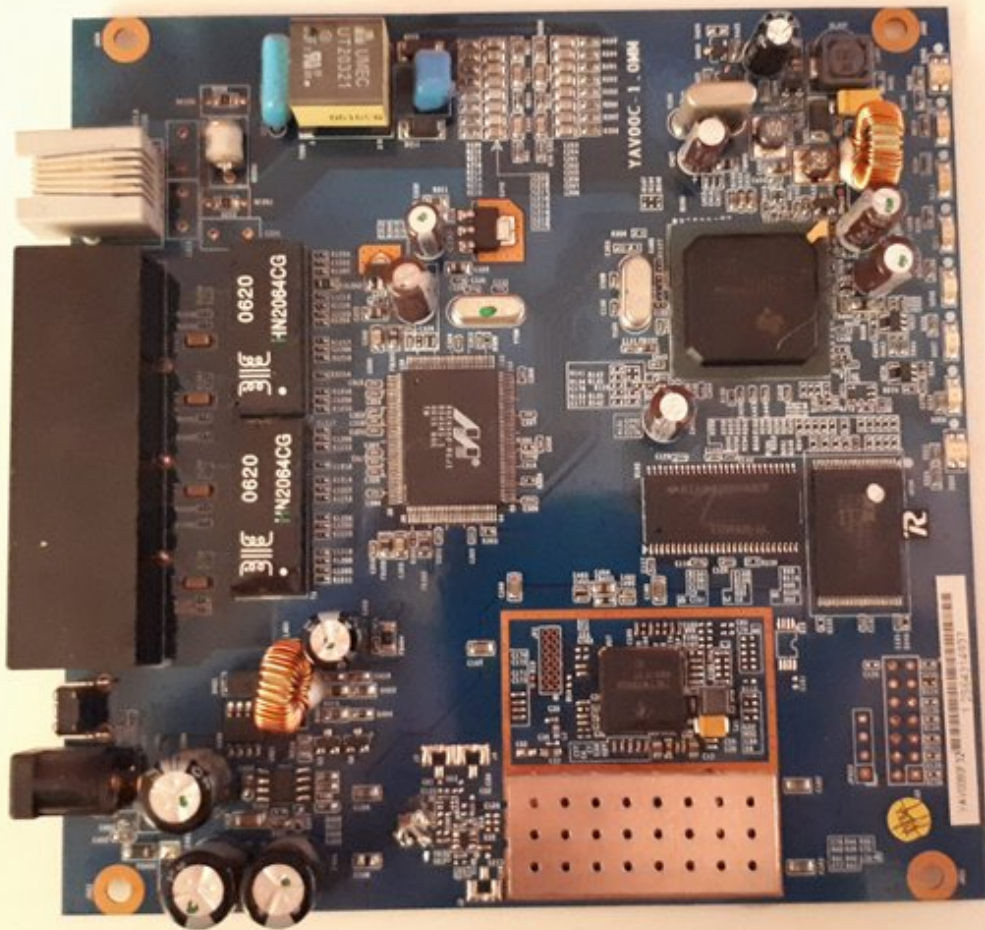




# Linksys WAG200G Teardown

This guide will show the teardown of a Linksys WAG200G.

Written By: knipwim



---

## INTRODUCTION

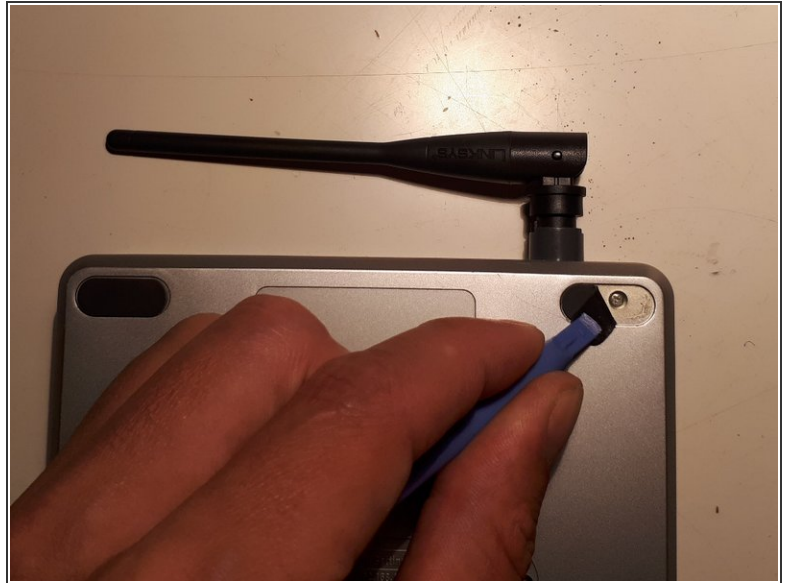
This guide will show the teardown of a Linksys WAG200G gateway.

---

### TOOLS:

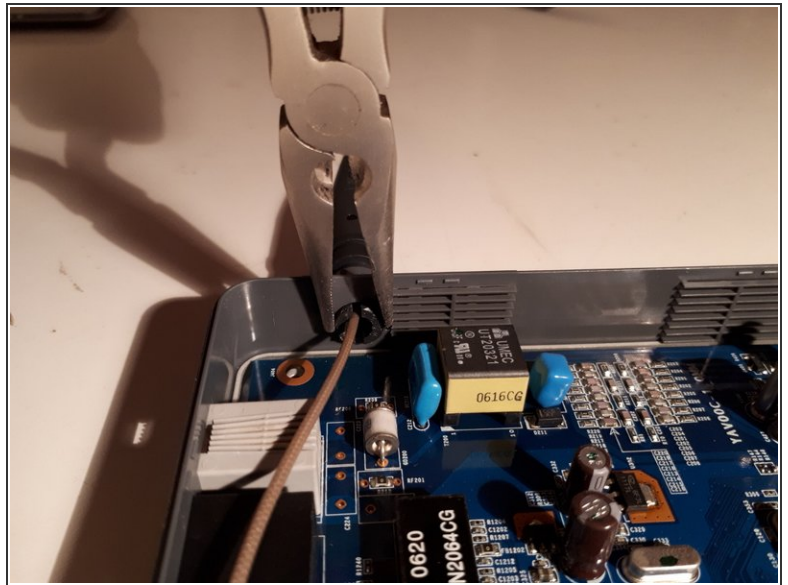
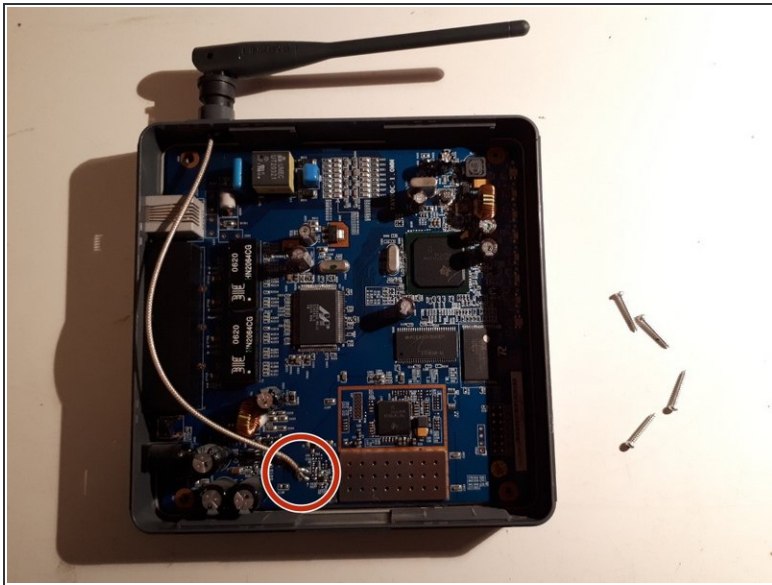
- [Phillips #00 Screwdriver](#) (1)
  - [iFixit Opening Tools](#) (1)
  - [Small Chain Nose Pliers](#) (1)
-

## Step 1 — open up the router



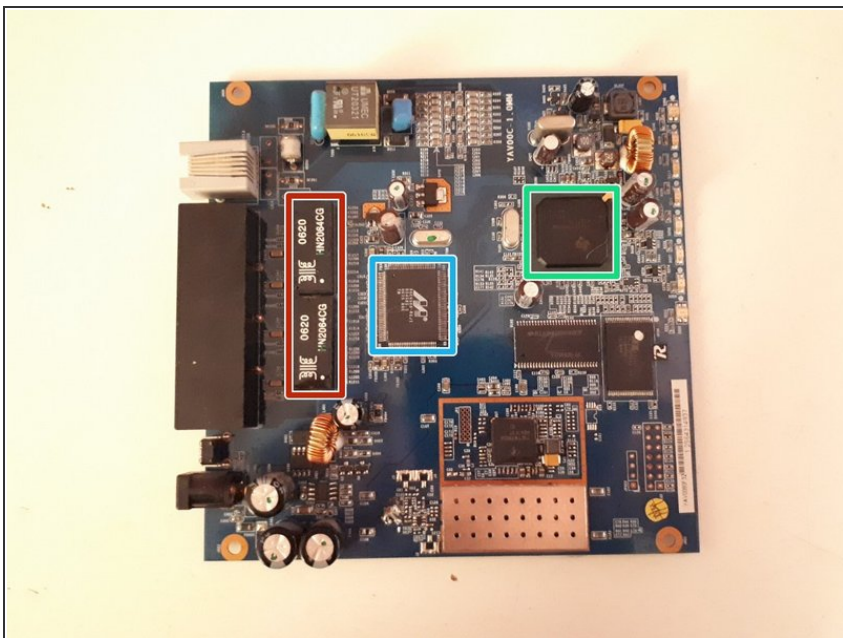
- Turn the router with the bottom facing upwards and locate the 4 feet.
- Use your nails or the opening tool to pry away each foot to reveal a screw, and unscrew each one.
- The front of the case can be disconnected from the backside now.

## Step 2 — remove the antenna



- The antenna cable is soldered to the board. It can be unsoldered or just cut.
- Use the pliers to make the underside of the antenna smaller so it can fit through the case hole, and at the same time, pull the antenna itself.

## Step 3 — remove the board from the case



- The board can now be removed from the case easily.
- 10/100 Base-T Dual Port Transformer: HN2064CG
- CPU: TNETD7200ZDW
- 10/100 Ethernet Switch : 88E6060-RCJ1

