



iHome iH3L Batteries Replacement

How to replace the batteries in an iHome iH3L if dead and/or corroded to bring the power back to your iHome.

Written By: Brittany Holloway



INTRODUCTION

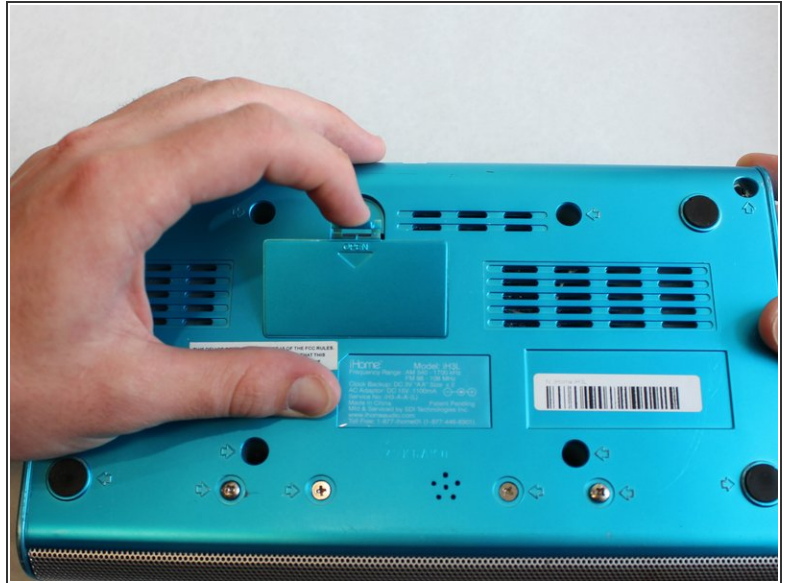
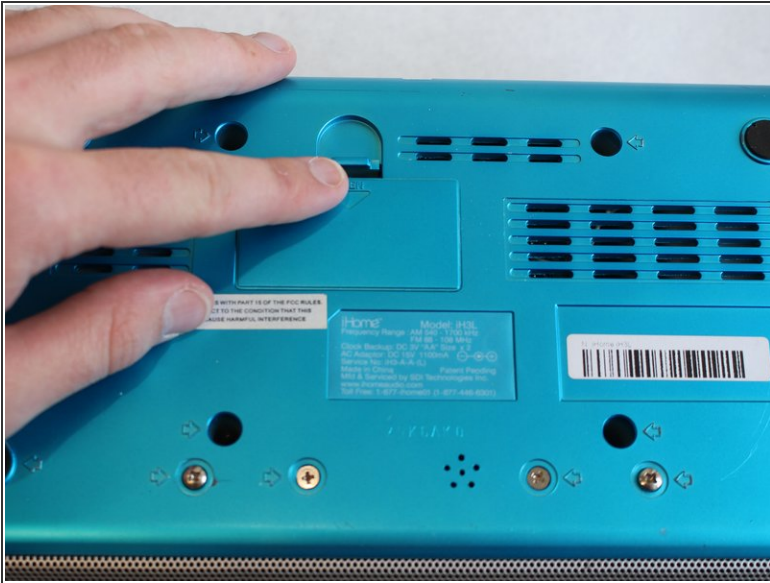
The batteries found at the bottom of the iHome has no power leading to the device powering on, these are backup batteries. If the batteries are corroded, please be careful and keep the corrosion away from your eyes and mouth as it can be dangerous.



PARTS:

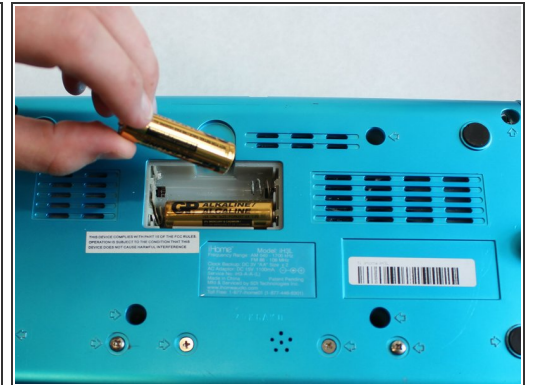
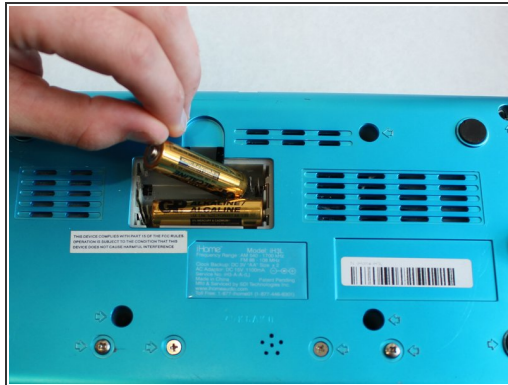
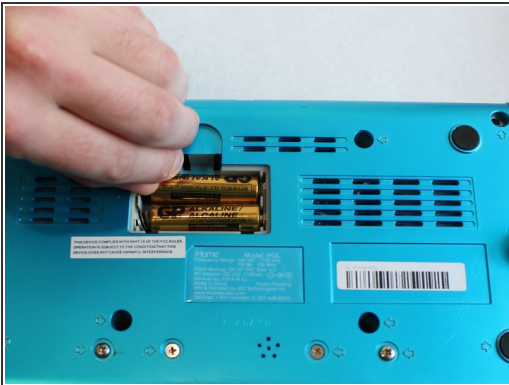
- [AA Battery](#) (2)
Any brand
-

Step 1 — Batteries



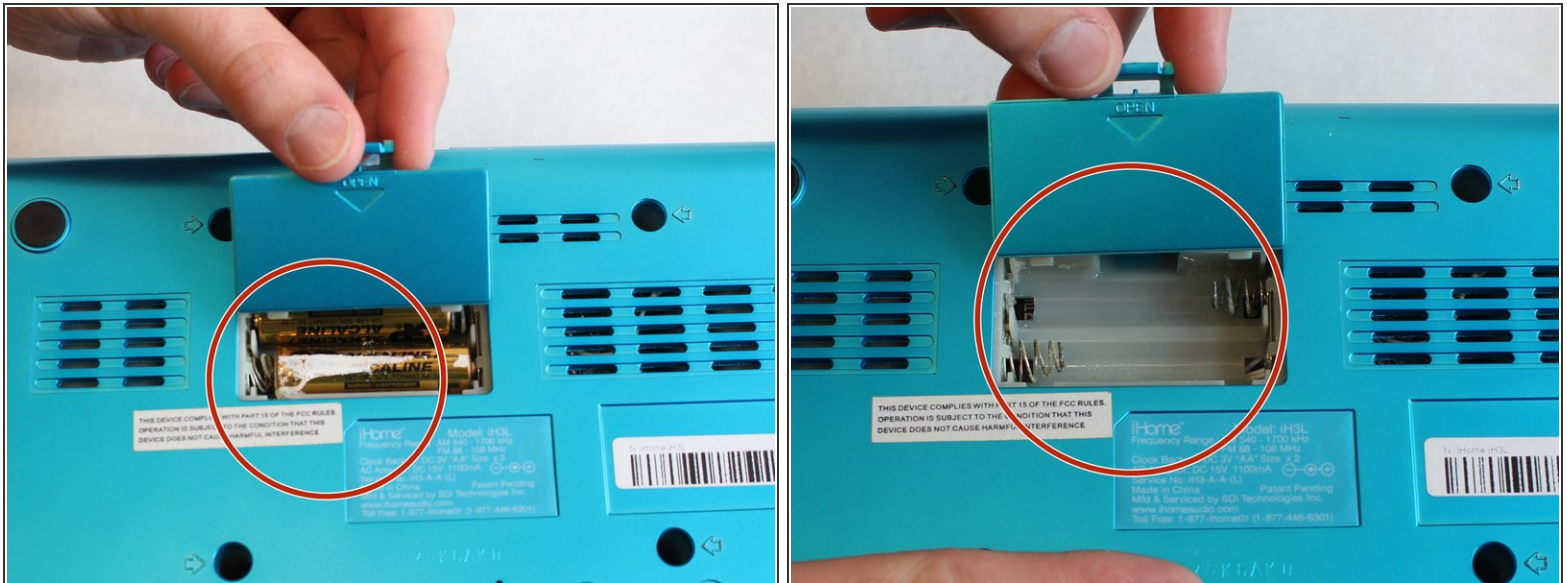
- Using your finger, pry the tab on the battery cover to remove the battery cover on the back of the iHome to access the batteries.

Step 2



- With the battery panel off, remove the batteries. Use your hands or a plastic spudger to remove the batteries.

Step 3



- When removing the batteries make sure to remove corrosion. Wear gloves when removing corrosion and use proper disposal.
- ⚠ Make sure to avoid contact with your eyes or mouth as it can cause irritation and lead to other problems.**

To reassemble your device, follow these instructions in reverse order.

This document was last generated on 2019-09-15 01:08:15 PM.