



Sony Xperia L2 LTE Battery Replacement

Replace a faulty battery to extend the life of your Sony Xperia L2 LTE.

Written By: Carrie Schmitt



INTRODUCTION


This guide will take you step by step through the process of replacing your Sony Xperia L2 battery. This guide will help those who have a dead or faulty battery to extend the life of your phone. If your phone is overheating, not powering on, or not charging properly, replacing the battery may fix those problems.

TOOLS:

- [T4 Torx Screwdriver](#) (1)
-

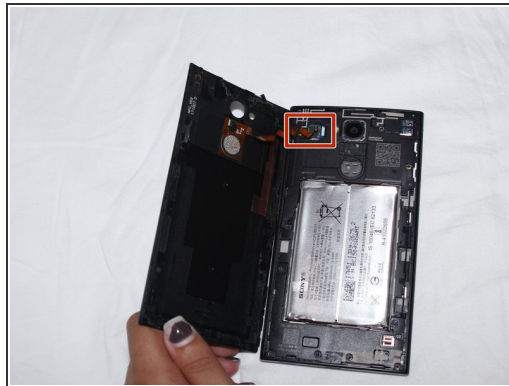
Step 1 — Battery




 Before disassembling the battery, power off your Sony Xperia L2 LTE.

- Remove SIM card tray.

Step 2



- Use the plastic opening tool to pry the back case of the phone off.

 The fingerprint sensor is connected to the motherboard.

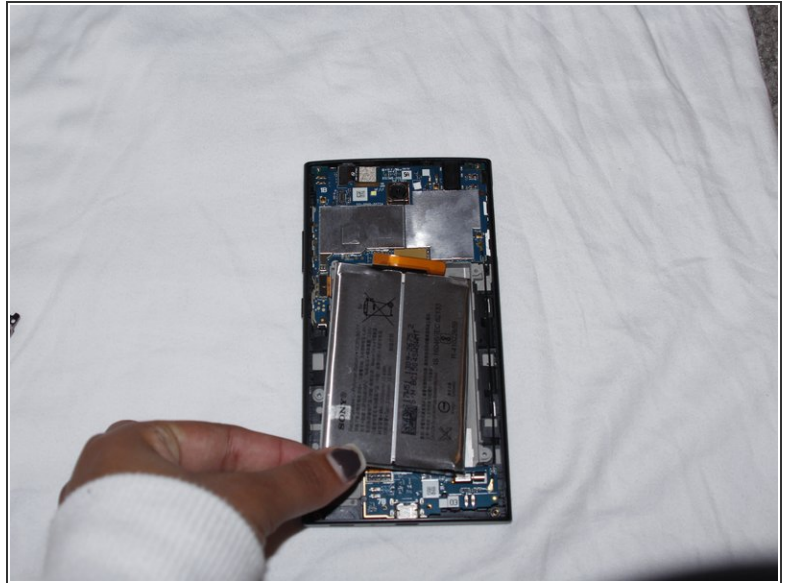
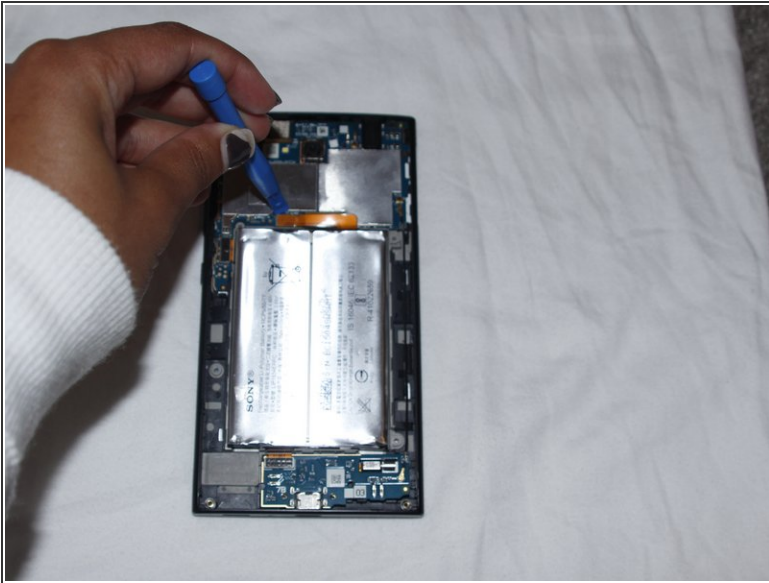
- Disconnect the fingerprint sensor.

Step 3



- Unscrew all 10 screws from the top and bottom portion of the phone using a T4 Torx screwdriver.
- Use the plastic opening tool to remove the unscrewed top and bottom portion of the phone.

Step 4



- Disconnect the battery cable from the motherboard.
 - Pry up the battery and remove it from the device.
- i** Battery may have adhesive that needs to be removed prior to removing the battery.
- !** Be careful not to jab the battery with any sharp tools. A punctured battery may leak dangerous chemicals or catch fire.

To reassemble your device, follow these instructions in reverse order.