



# Interior door panel removal

How to get the interior door panel off

Written By: Arthur Hopkins



---

## INTRODUCTION

2005 Pontiac GRAND AM How to remove Interior door panels

---

### TOOLS:

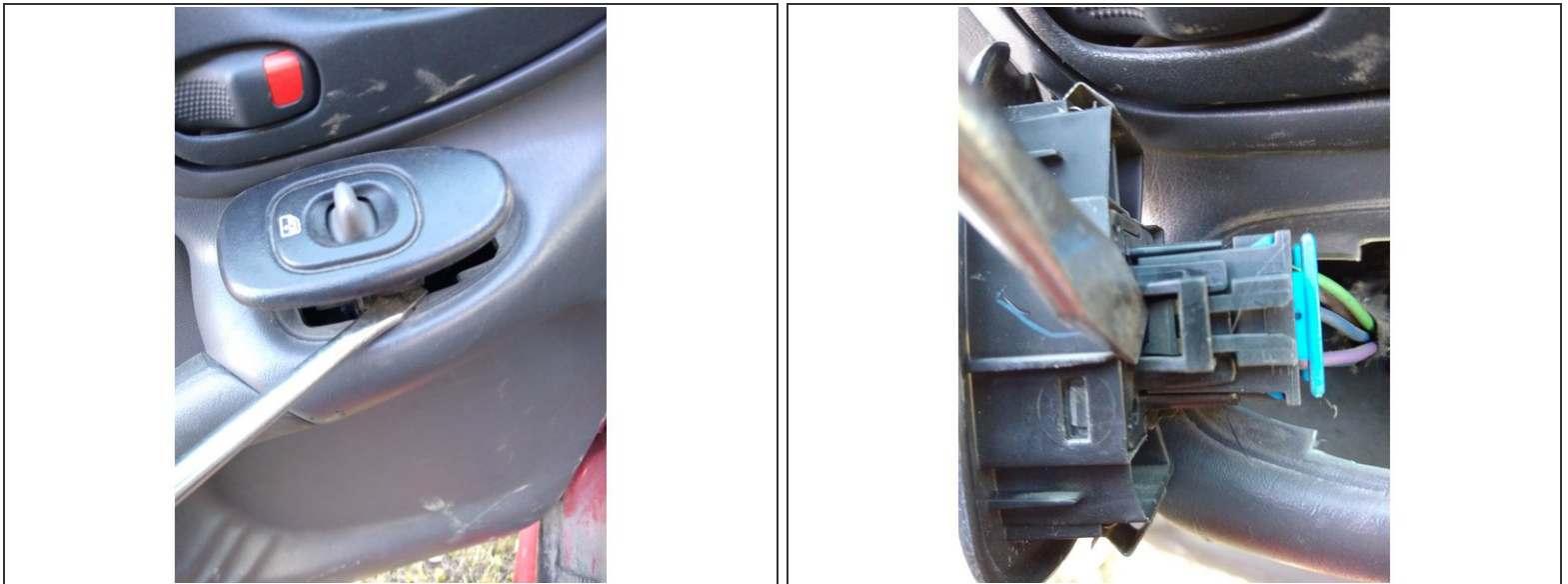
- [Flathead Screwdriver](#) (1)
-

## Step 1 — Interior door panel removal



- Remove Phillips head screw from inside the door handle (pic #2)
- And from inside the arm rest handle. The screw may not come out but get it loose (pic#3)

## Step 2 — Remove window switch



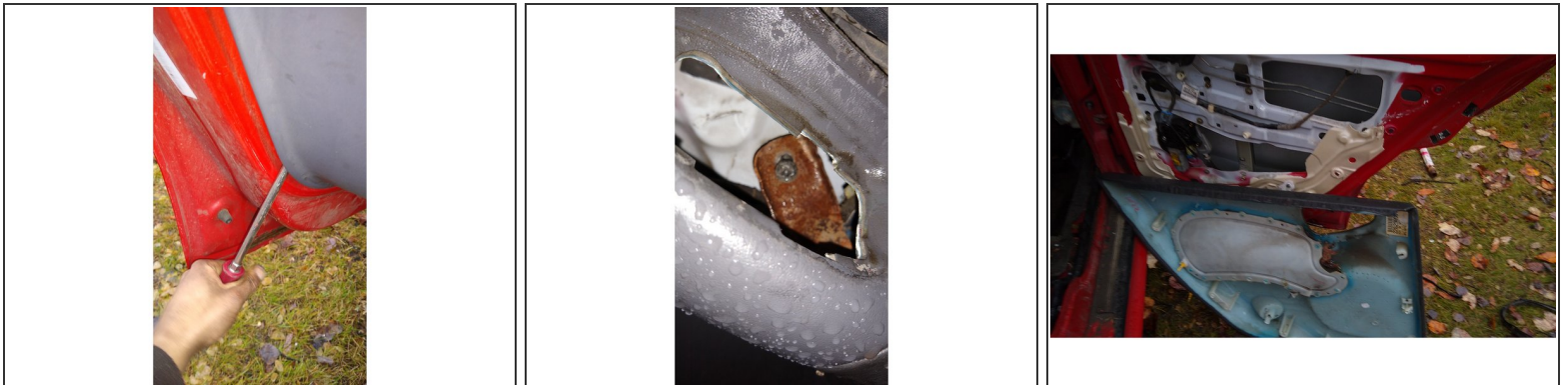
- With flat head or small pry bar pop the switch up
- Now use flat head to push the tab on the molex plug. Pops out.

### Step 3 — Door handle trim + Reflector



- With your pry tool remove the outer trim on the inside door handle
- With your same pry tool pop off the red Reflector at the bottom of the door

### Step 4 — Panel off



- With pry bar go a around the outer edge of the trim of the panel where it meets the door and pry out words continue doing this all the way around the door until it pops almost completely off
- Now where the handle was look inside you'll see his screw Phillips head that needs to be loosened and the panel will come off (pic2)

This document was last generated on 2019-07-10 09:34:00 AM.