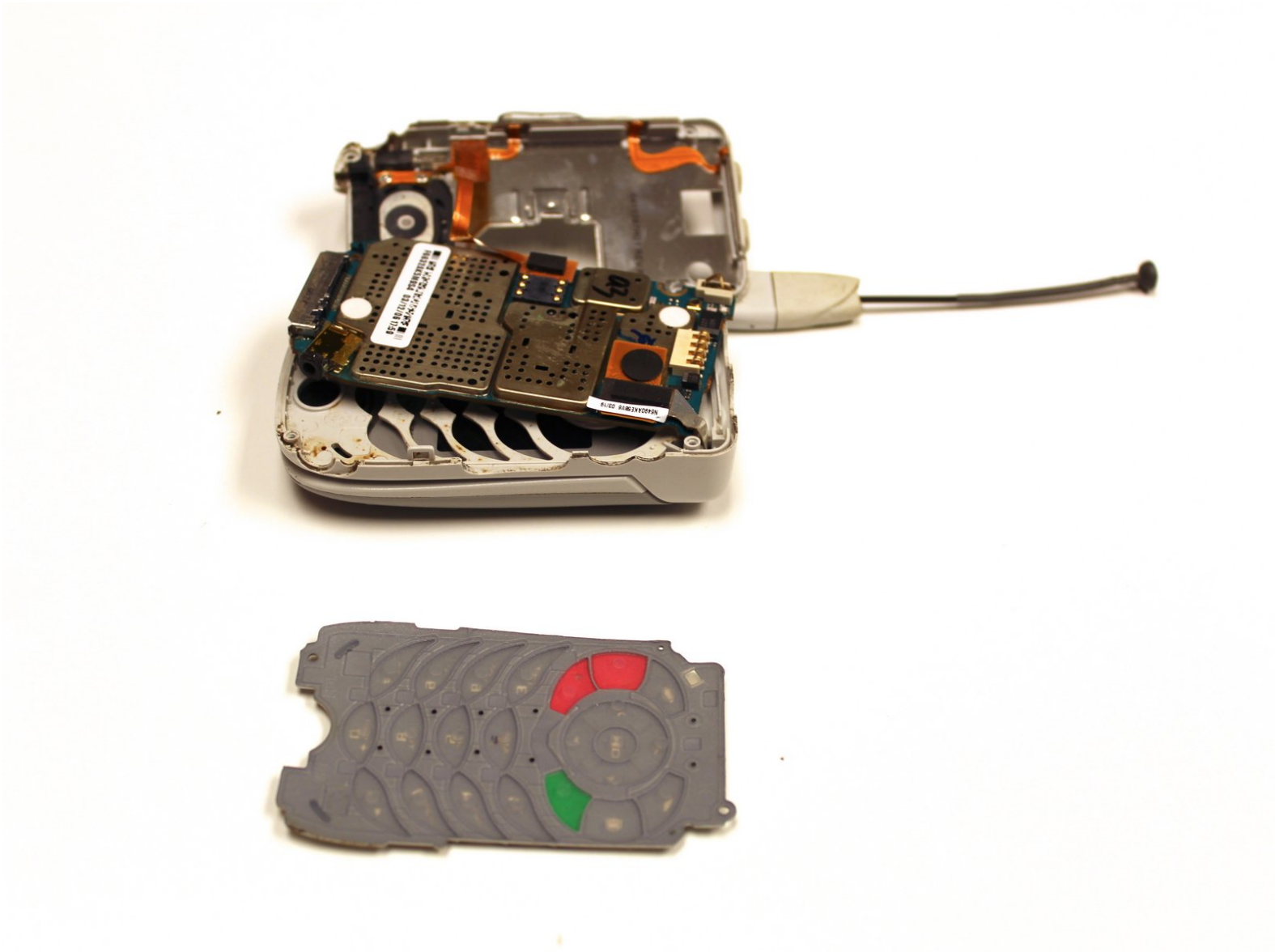




Motorola i450 Boost Mobile Keypad Replacement

This guide provides instructions for removal and replacement of the keypad.

Written By: Garrison Stevens



INTRODUCTION

The keypad protects the phone's interior while enabling the user to input commands into the phone.

TOOLS:

- [Anti-Static Project Tray](#) (1)
 - [Spudger](#) (1)
 - [T5 Torx Screwdriver](#) (1)
 - [T6 Torx Screwdriver](#) (1)
-

Step 1 — Back Cover



- Place the phone on a flat surface with the front facing down.
- Insert your finger under the gray plastic cover at the bottom end of the phone.
- Lift the cover off the phone.

Step 2 — Battery



- Place your thumb in the notch in the lower left corner of the battery compartment.
- Lift the battery up and away from the phone.
- Remove the battery.

Step 3 — SIM Card



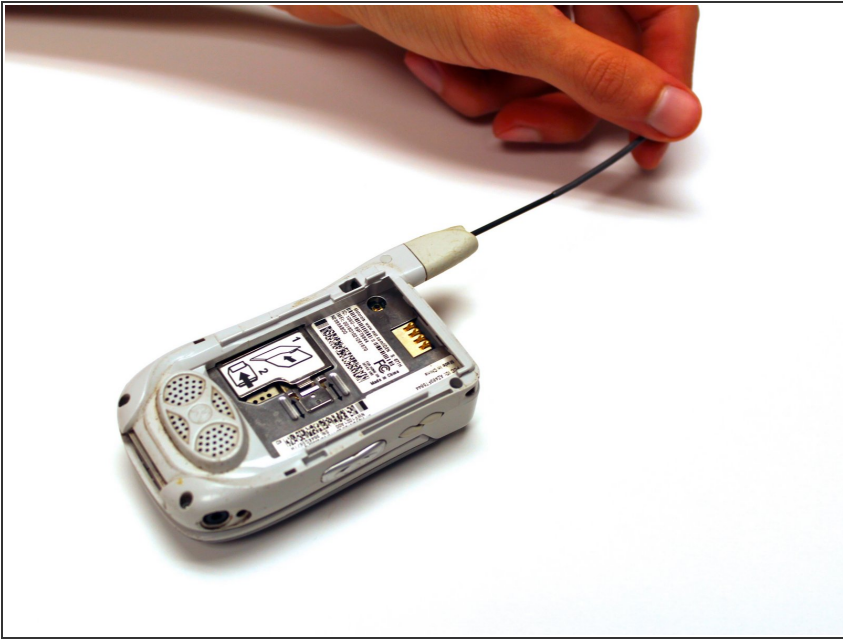
- Locate the metal slider that holds the SIM card in place.
- Push the slider away from the metal flap which contains the SIM card. The flap will pop up.

Step 4



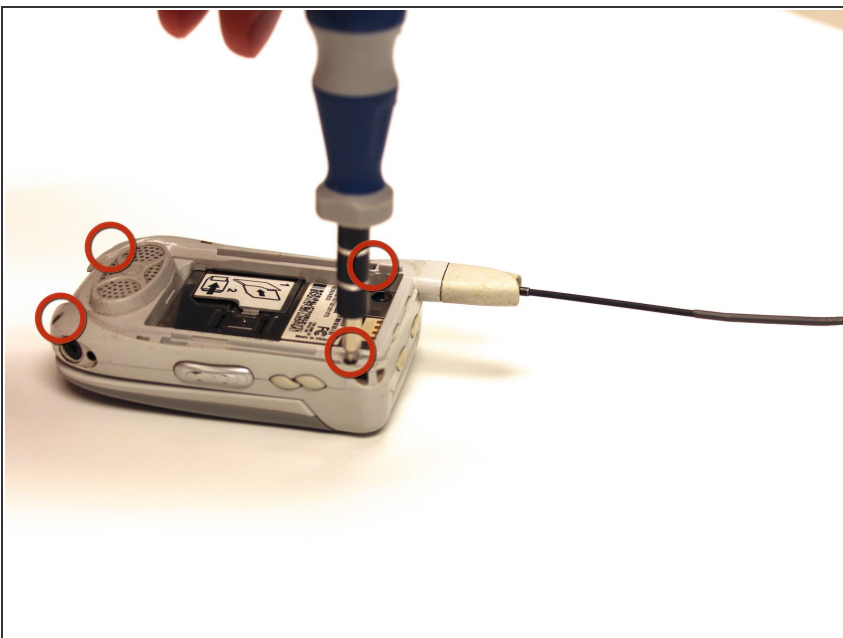
- Lift the metal flap to gain access to the bottom of the SIM card.
- Remove the SIM card by sliding it out parallel to the bottom of the flap.

Step 5 — Circuit Board



- Extend the antenna.

Step 6



- Remove the four 4.8 mm Torx T6 screws from the corners of the back of the phone.
- ⓘ If the antenna is not fully extended, the top left screw will not be accessible.

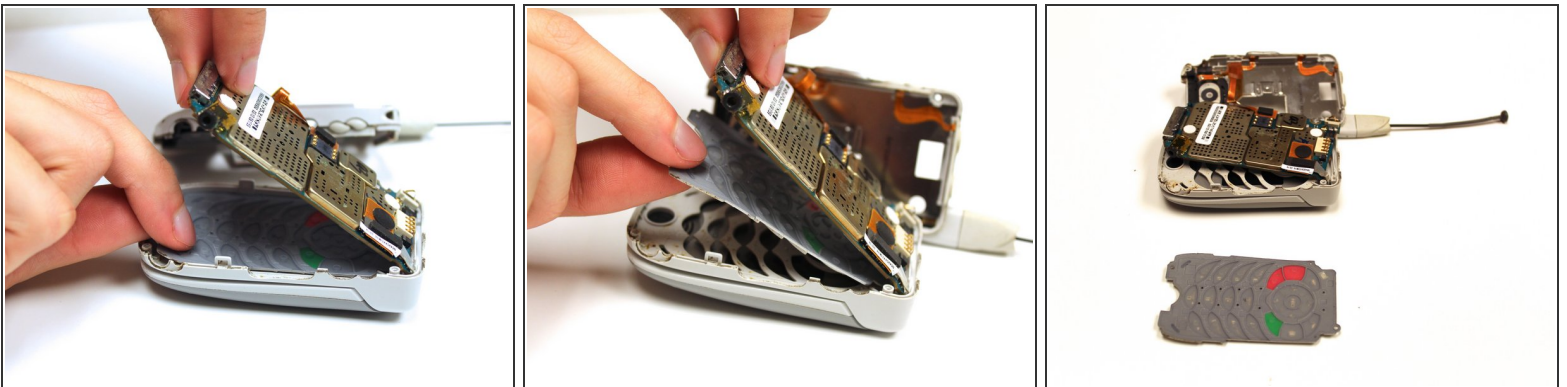
Step 7



- Gently lift off the back half of the phone and set to the side.

⚠ Permanent circuit connections prevent the cover from completely separating from the phone. Do not attempt to disconnect these circuits.

Step 8 — Keypad



- Gently lift the end of the circuit board farthest from the phone hinge.

⚠ The circuit board is permanently connected to the phone casing at the end nearest to the hinge.

- Grasp the keypad at the bottom of the phone, raise it, and pull it away.

To reassemble your device, follow these instructions in reverse order.