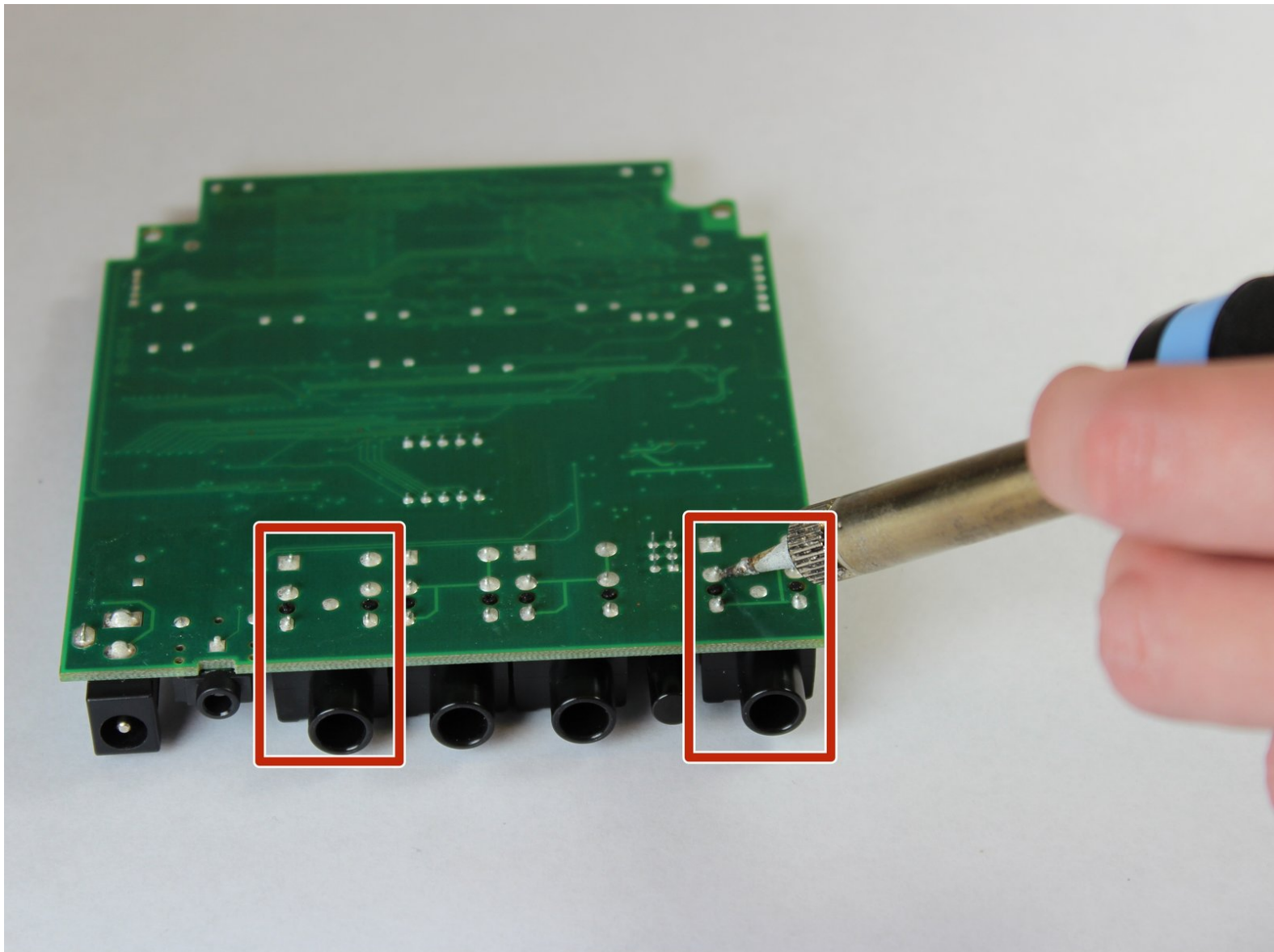




DigiTech RP70 Input/Output 1/4" Ports Replacement

This is the guide to replace any of the three input/output jacks on the RP70.

Written By: Elijah Smith



INTRODUCTION

If the input/output port is broken this guide will teach you how to remove the broken component for replacement.

TOOLS:

- [Phillips #0 Screwdriver](#) (1)
 - [Soldering Iron](#) (1)
-

Step 1 — Motherboard



! Unplug the device from its AC power adapter; unplug anything connected to the input/output jacks.

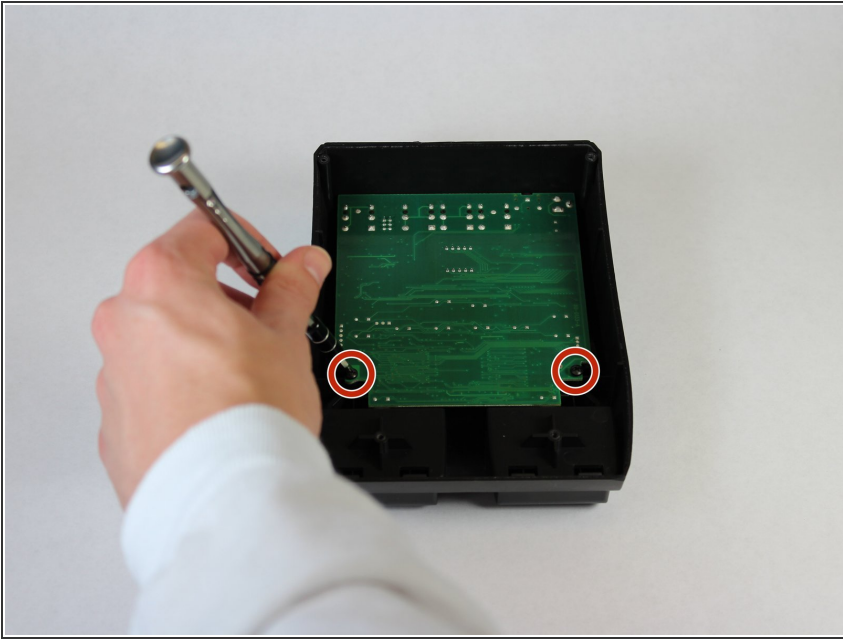
- Remove the four 8mm Phillips #0 screws located on the back panel.

Step 2



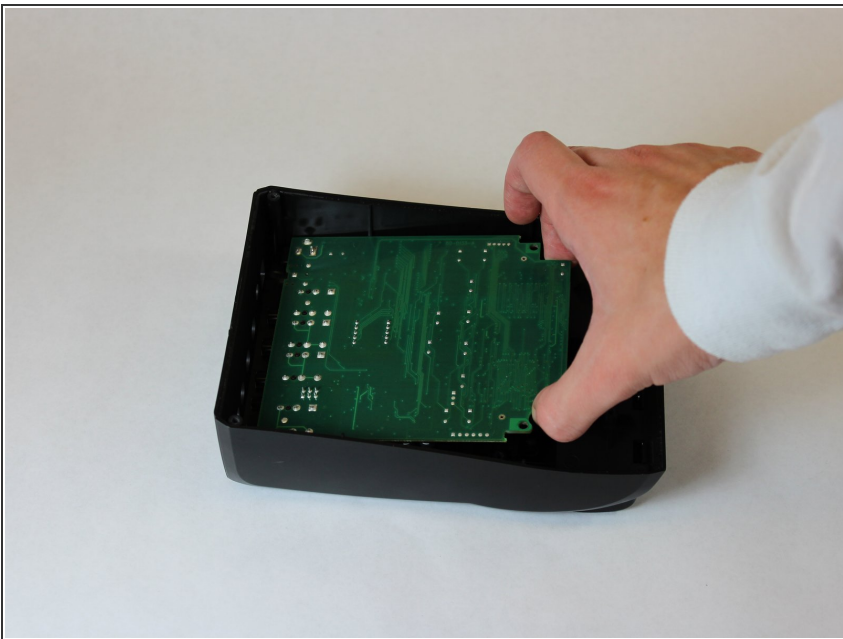
- Remove the back panel to expose the motherboard.

Step 3



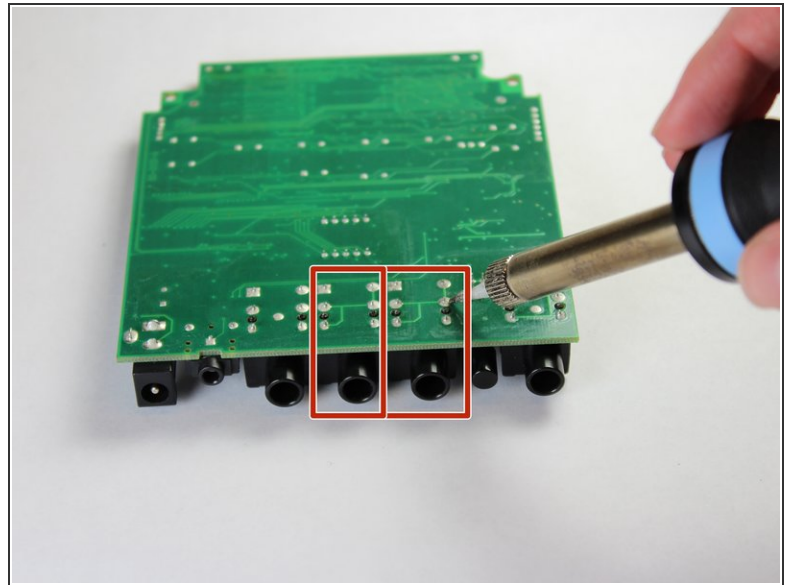
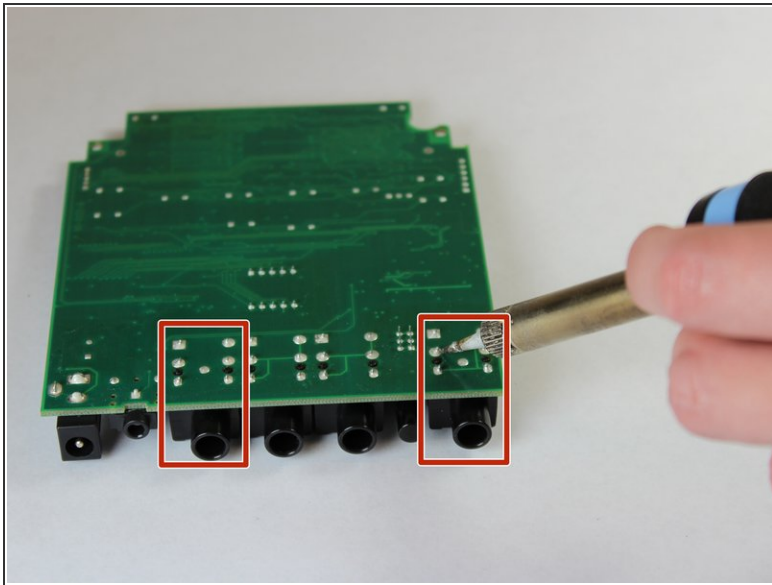
- Remove the two 11mm #0 Phillips screws located at the bottom of the motherboard.

Step 4



- Lift the indented end of the motherboard opposite the input/output jacks. Then, pull away from the input/output jacks to slide the motherboard out of the casing.

Step 5 — Input/Output 1/4" Ports



- [Desolder](#) the back of the motherboard where the damaged input/output port is located.

To reassemble your device, follow these instructions in reverse order.

This document was last generated on 2019-07-16 07:25:47 PM.