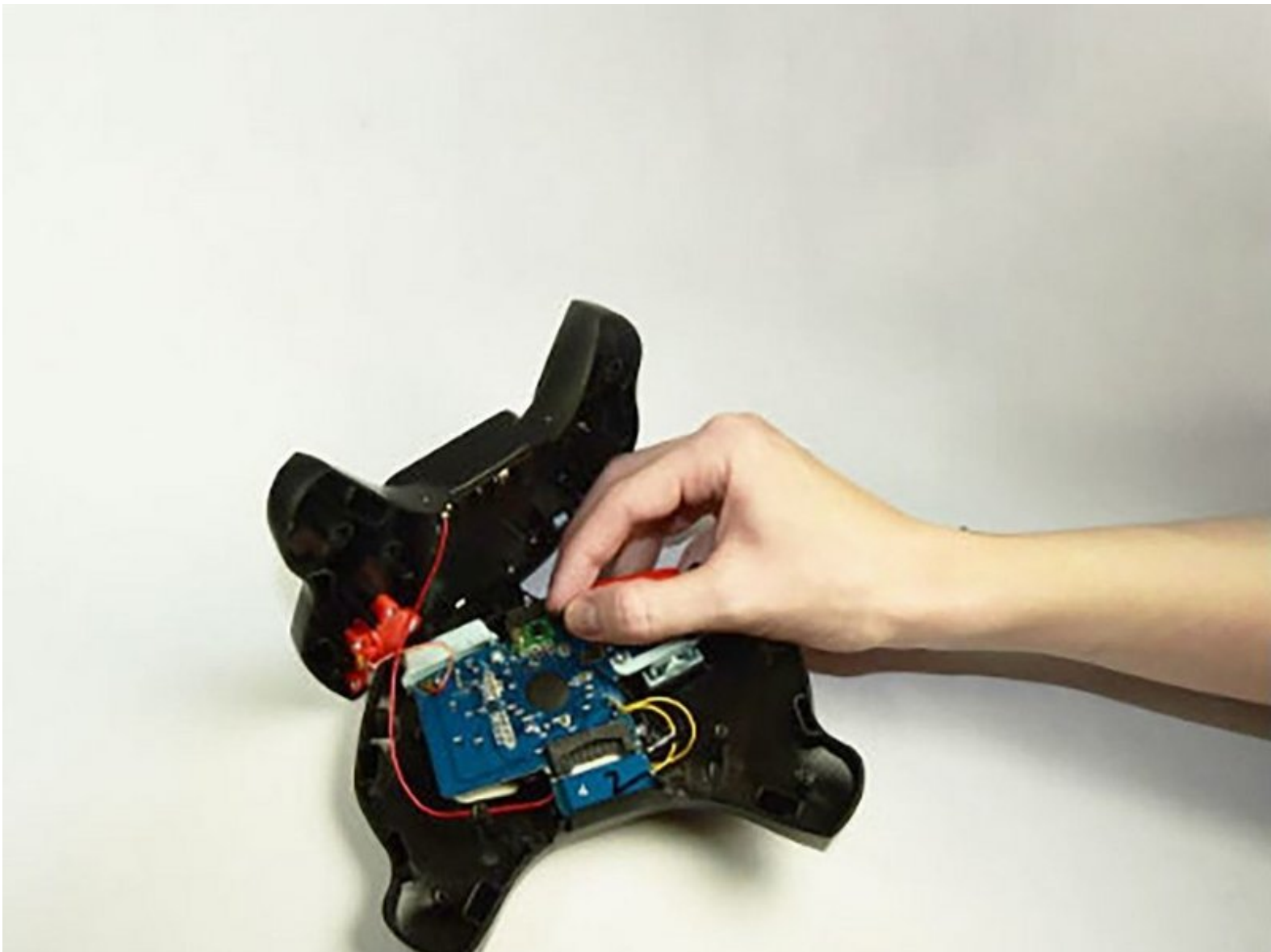




Hot Wheels AI Intelligent Race System Controller Transmitter Replacement

Step by step guide to replacement of malfunctioning controller transmitter in Hot Wheels Race System.

Written By: Luke Marshall



INTRODUCTION

Your Hot Wheels AI Intelligent Race System controller may fail to respond or lag, even when the cars are working perfectly. You will need a #J1 Philips head screw driver for repairs. Be cautious when removing casing as wires are prone to disconnecting or breaking. Use caution when removing circuits as wires can get stuck and circuits can be damaged.

TOOLS:

- [JIS #1](#) (1)

Step 1 — Controller Transmitter



- Locate and remove the six screws on the back of the controller. Remove screws with a #J1 Philips head screwdriver.

Step 2



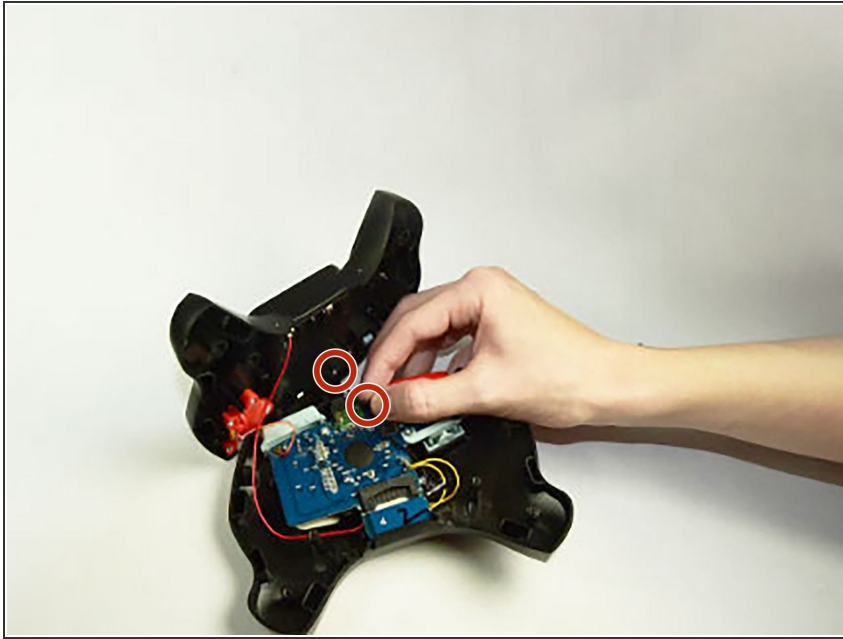
- With the controller facing down remove the top casing from the bottom. Do this by popping the casing lose which will expose the inside circuits.

Step 3



- With the circuits exposed locate the transmitter at the top of the controller. It is green hue in comparison to the rest of the blue circuits. Check the transmitter for damage or disconnected wires.

Step 4



- If transmitter has broken or has disconnected wires it may need replacement. Wires can easily break loose from the transmitter. The wires can easily be reinserted by sticking the wire back into its original slot.

Step 5



- If the transmitter is damaged, replace it by sliding the circuit down from its slot. Check for damage or burned out circuit.
- Replace transmitter circuit with a new one by reinserting it into the original slot.

To reassemble your device, follow these instructions in reverse order.