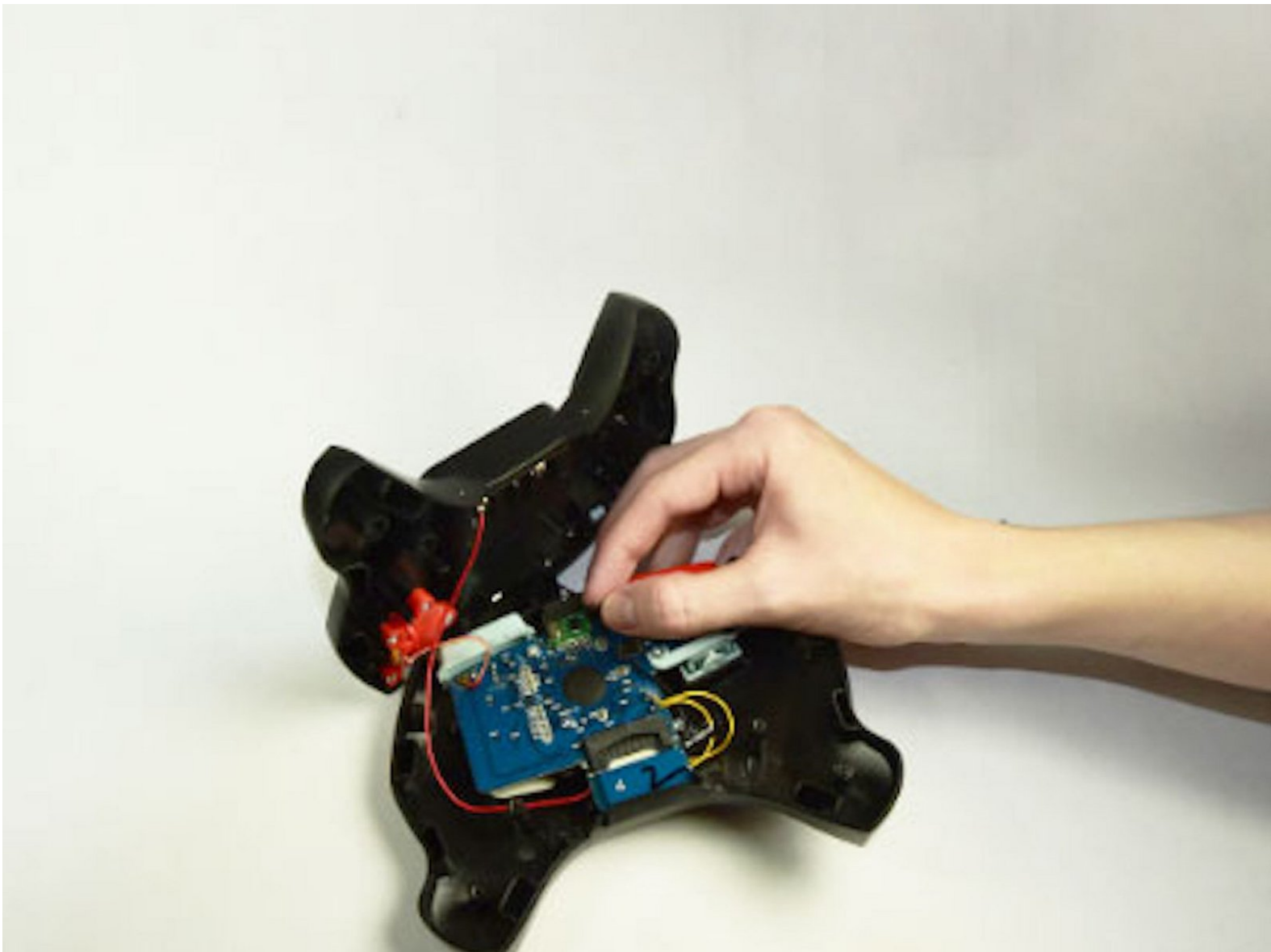




Hot Wheels AI Intelligent Race System Wire Replacement

Guide to replacement of broken or disconnected wires in malfunctioning Hot Wheels Race System Controller.

Written By: Luke Marshall



INTRODUCTION

The Hot Wheels Race System Controller may become unresponsive due to broken or disconnected wires. Heavy use or dropping can cause these disconnections. These wires may need to be reconnected or replaced. Take care when opening the controller as more wires could break.

TOOLS:

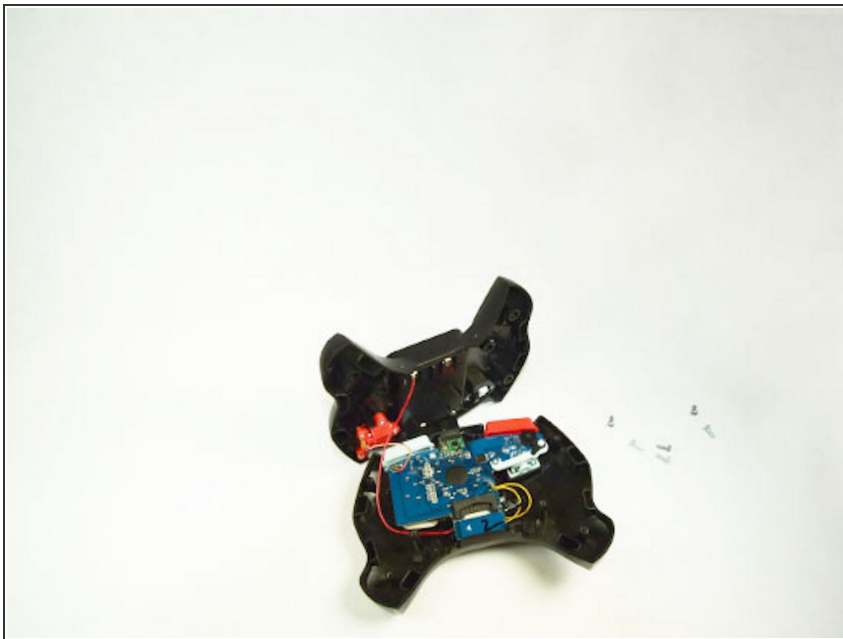
- [JIS #1](#) (1)
-

Step 1 — Controller Wires



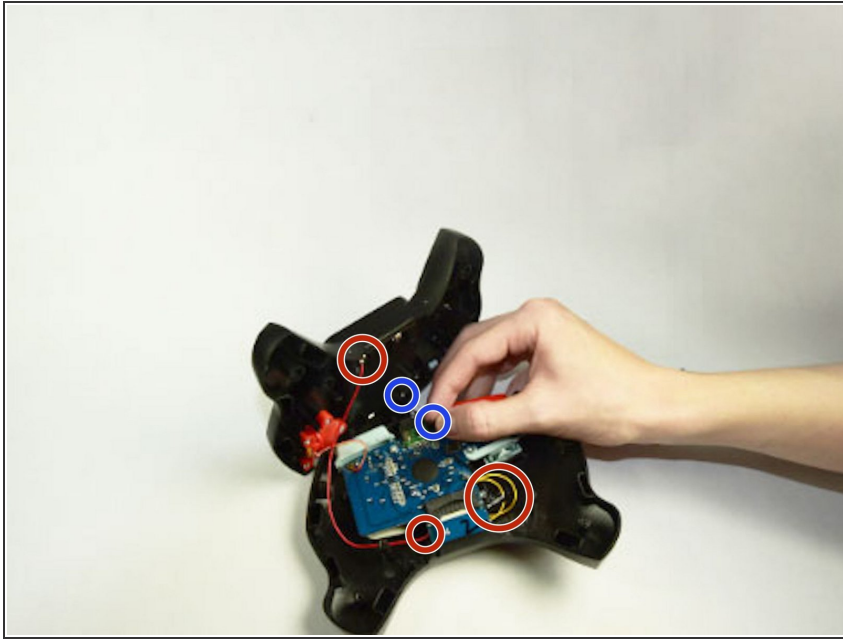
- Remove the six screws located on the back of the controller using a JIS #1 screwdriver.

Step 2



- Pop the front of the controller casing from the back and carefully lay the controller out with circuits exposed.

Step 3



- Check all wires for disconnections. They are color coated red, black, orange, and yellow. If wires are disconnected they can easily be reinserted as shown in photos.
- Some wires may require soldering which can be done with a soldering iron. The wire marked in red may need to be soldered but can sometimes be reattached.

To reassemble your device, follow these instructions in reverse order.