



Hot Wheels AI Intelligent Race System Controller Buttons Replacement

Guide to replacement of Hot Wheels Intelligent Race System controller buttons.

Written By: Luke Marshall



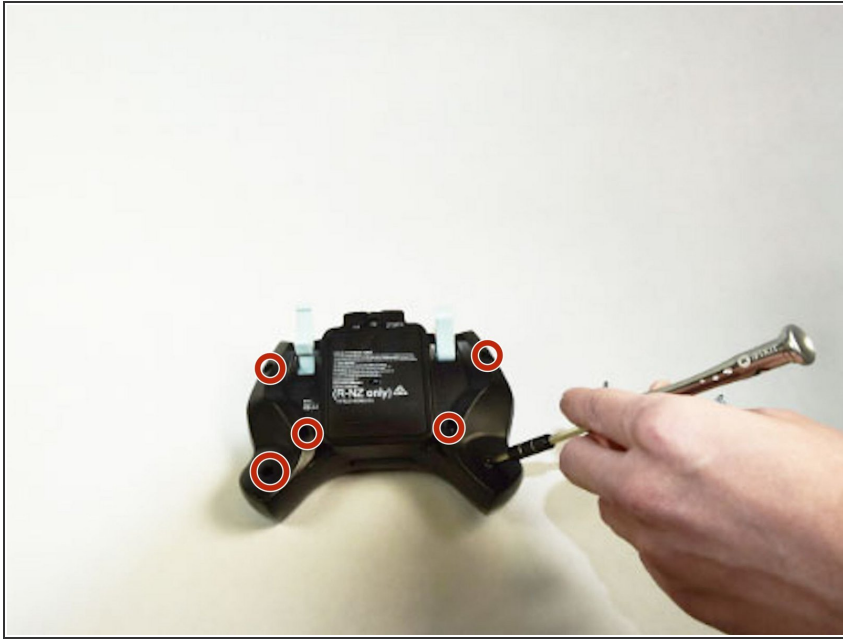
INTRODUCTION

The Hot Wheels AI Intelligent Race System may experience jammed or broken buttons on the controller. Be careful when disassembling the controller as wires can break or circuits can be damaged.

TOOLS:

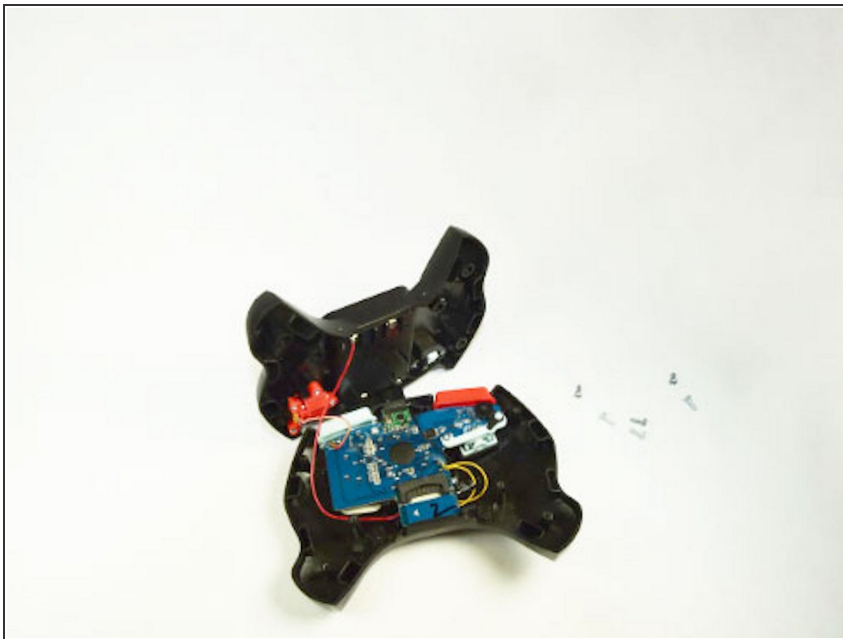
- [JIS #1](#) (1)

Step 1 — Controller Buttons



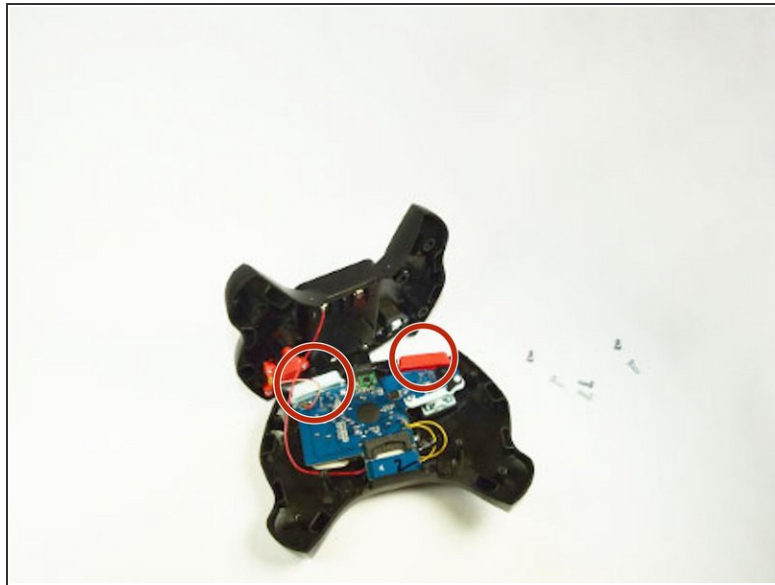
- Remove the six screws located on the back of the controller using a #J1 JIS head screwdriver.

Step 2



- Pop the front of the controller casing from the back and carefully lay the controller out with circuits exposed.

Step 3



- Locate controller buttons at the top of the controller. They are blue and red. Check for debris that may be jamming buttons or broken buttons.

Step 4



- If buttons are jammed or broken easily remove them by snapping them up and out of place. Replace buttons with new ones or clear debris and clean buttons.

To reassemble your device, follow these instructions in reverse order.

This document was last generated on 2019-07-20 01:23:41 AM.