



Dell Inspiron 15-7547 Hard Drive Replacement

The guide shows the process of disconnecting the Dell Inspiron 15-7547's hard drive.

Written By: Isaac Brooks



INTRODUCTION

The guide shows the process of disconnecting the Dell Inspiron 15-7547's hard drive.

TOOLS:

- [Spudger](#) (1)
 - [Phillips #0 Screwdriver](#) (1)
-

Step 1 — Bottom Cover



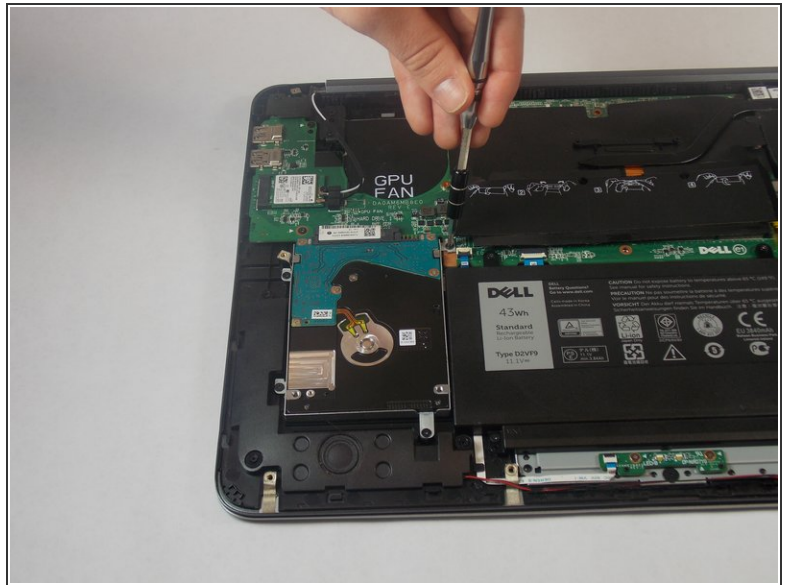
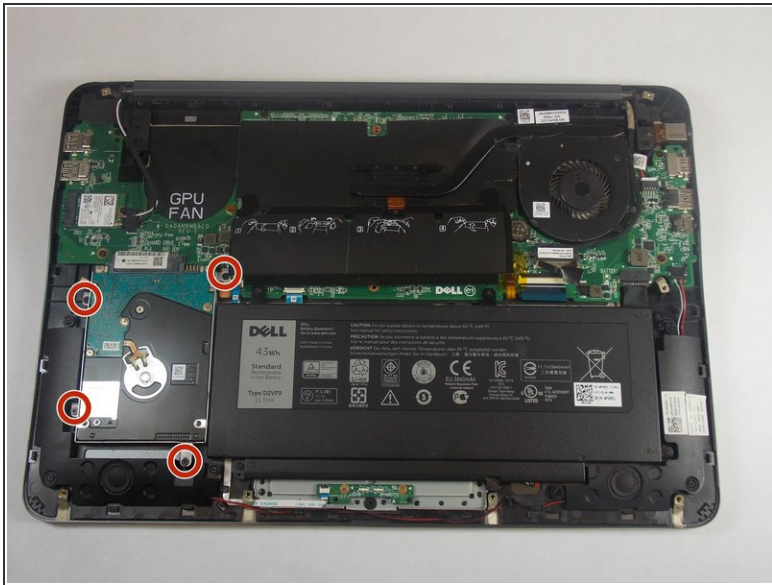
- Close the display and flip the laptop on its back.
- Loosen the ten 5.0 mm-long Phillips #0 screws.
- The four screws marked with orange will remain captive to the cover.

Step 2



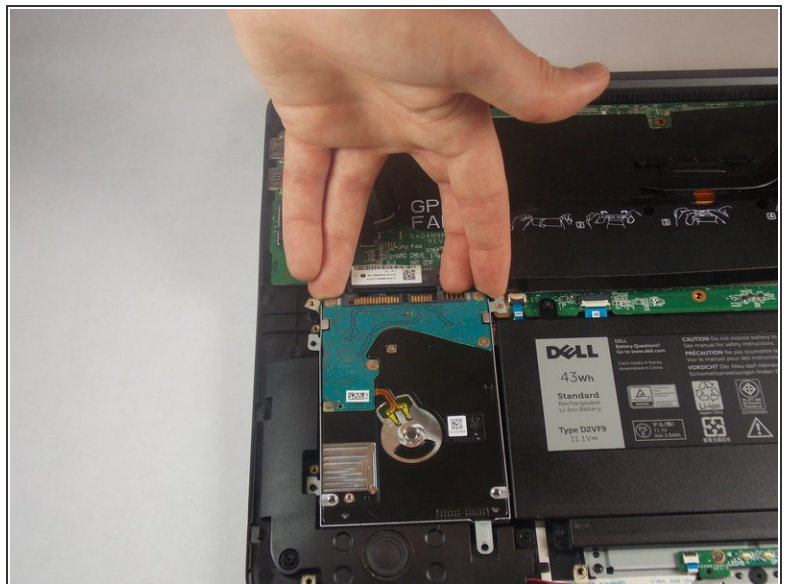
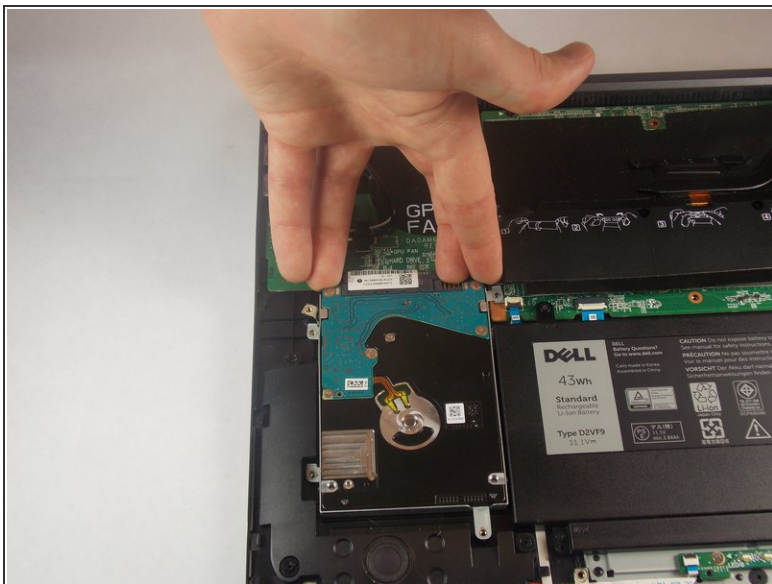
- Pry the cover open with a plastic spudger and remove it.

Step 3 — Hard Drive



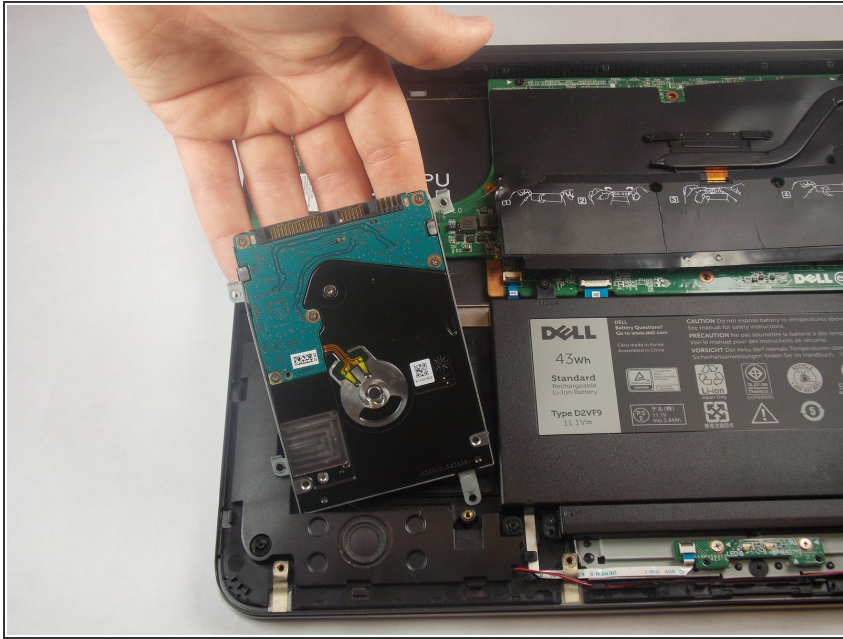
- Remove the four 5.0 mm-long Philips #0 screws connecting the hard drive to the chassis.

Step 4



- Disconnect the hard drive from the motherboard by placing your fingers at the back, and pulling forward towards the front of the chassis.

Step 5



- Lift the hard drive out of the chassis.

To reassemble your device, follow these instructions in reverse order.

This document was last generated on 2019-01-15 11:59:00 AM.