



# Dell Inspiron 15-7547 WiFi Card Replacement

If you're experiencing issues with connecting to the internet it may be because of a faulty WiFi card.

Written By: Claro



---

## INTRODUCTION

The guide shows the process of removing the WiFi card from your Dell Inspiron 15-7547 laptop.

---

### TOOLS:

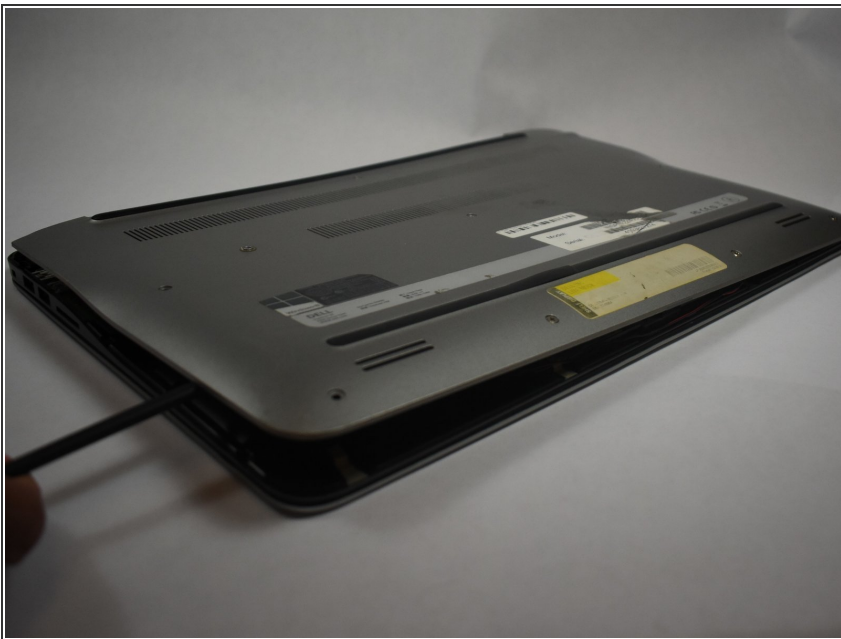
- [Spudger](#) (1)
  - [Phillips #0 Screwdriver](#) (1)
-

## Step 1 — Bottom Cover



- Close the display and flip the laptop on its back.
- Loosen the ten 5.0 mm-long Phillips #0 screws.
  - The four screws marked with orange will remain captive to the cover.

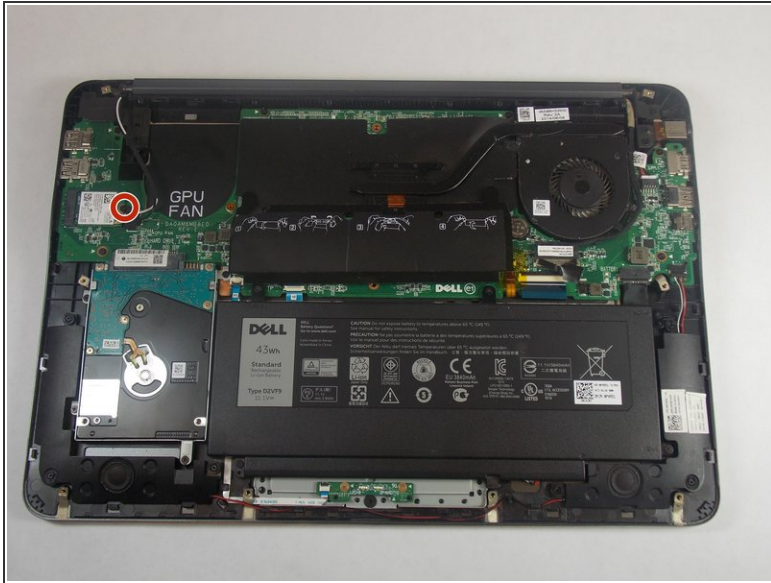
## Step 2



- Pry the cover open with a plastic spudger and remove it.

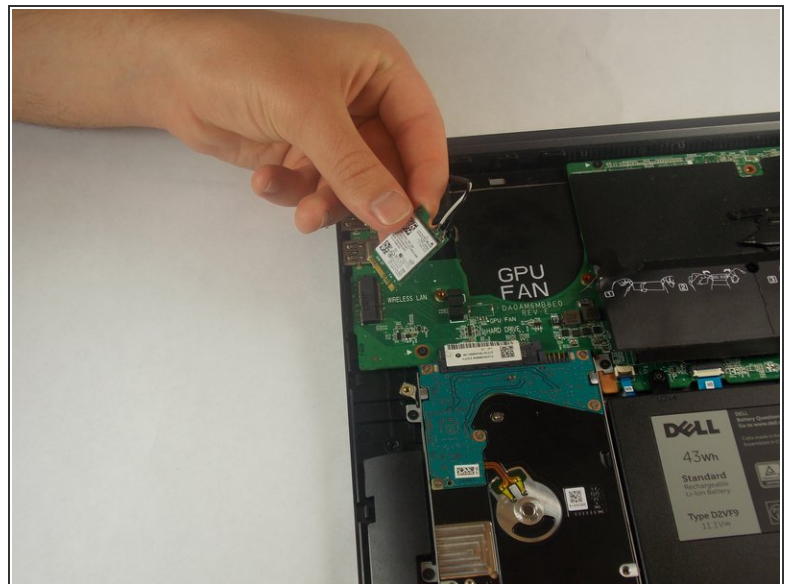
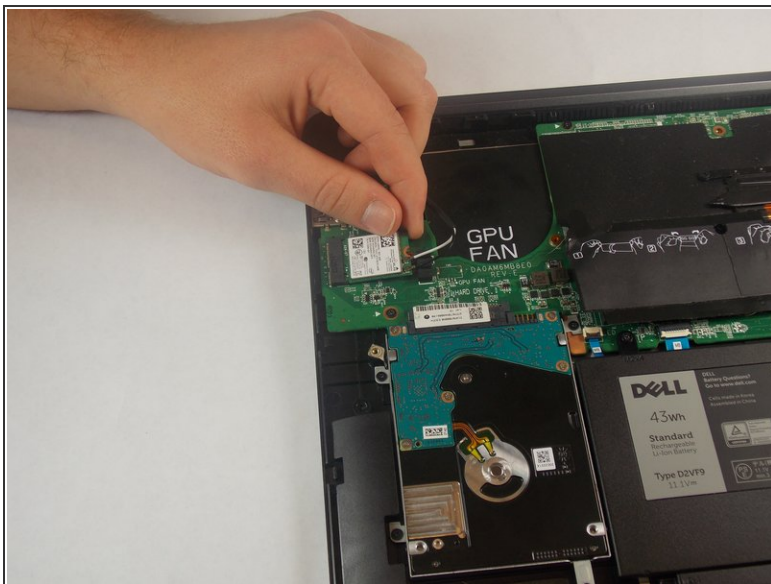


### Step 3 — WiFi Card



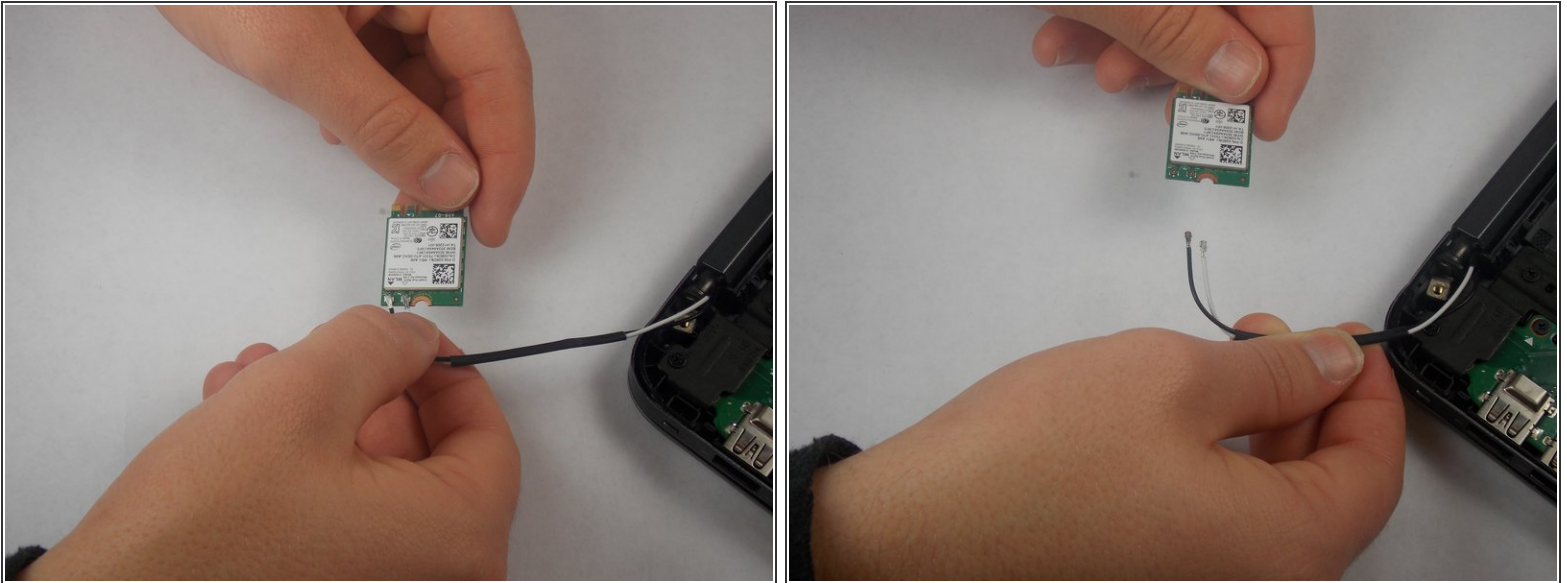
- Remove the 3.0 mm-long Philips #0 screw at the end of the Wifi-Card

### Step 4



- Remove the Wifi-Card from its socket by pulling away and up from the connector.

## Step 5



- Disconnect the white and black cables from the Wifi-Card.
- ⓘ Make a note of which wire goes where for reconnecting them to the replacement card.

To reassemble your device, follow these instructions in reverse order.