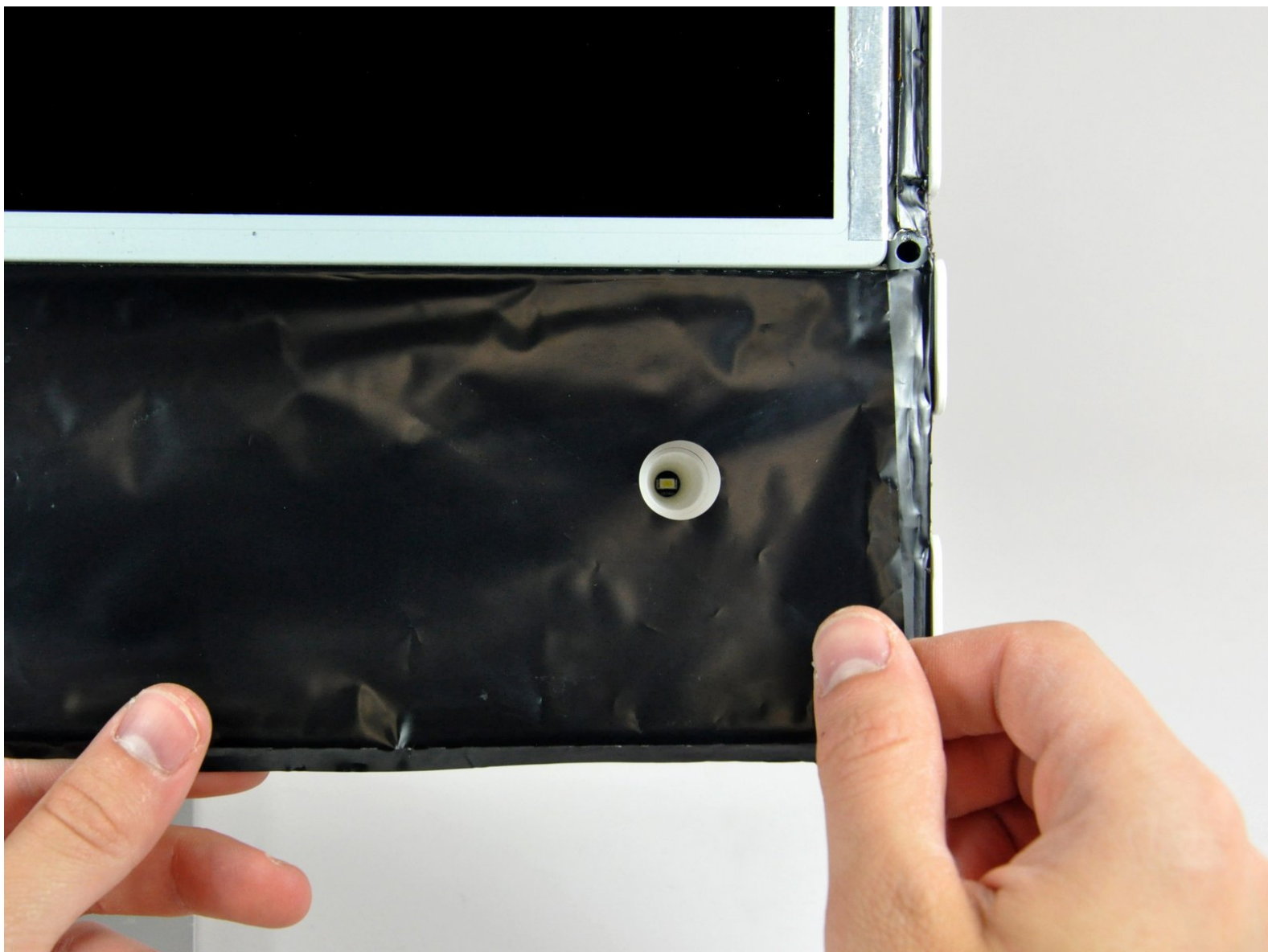


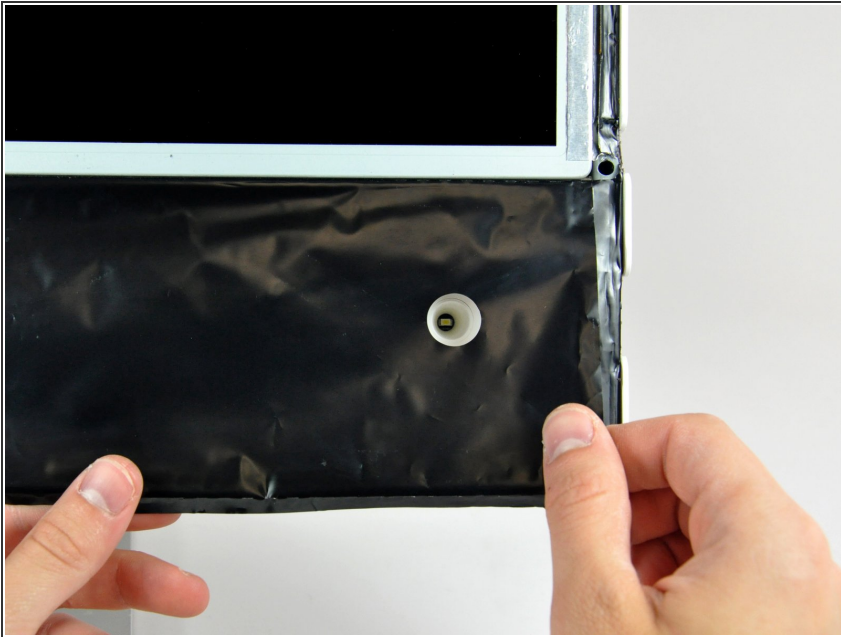


iMac G5 20" Model A1145 Lower EMI Shield Replacement

Written By: Andrew Bookholt



Step 1 — Lower EMI Shield



- Peel the lower EMI shield off the lower edge of the iMac and off the two vertical 4" sections on either side of the iMac.
- ⓘ It is not necessary to peel the lower EMI shield off the display.

Step 2



- Tape the lower EMI shield up against the face of the display to keep it out of the way while you work.

To reassemble your device, follow these instructions in reverse order.