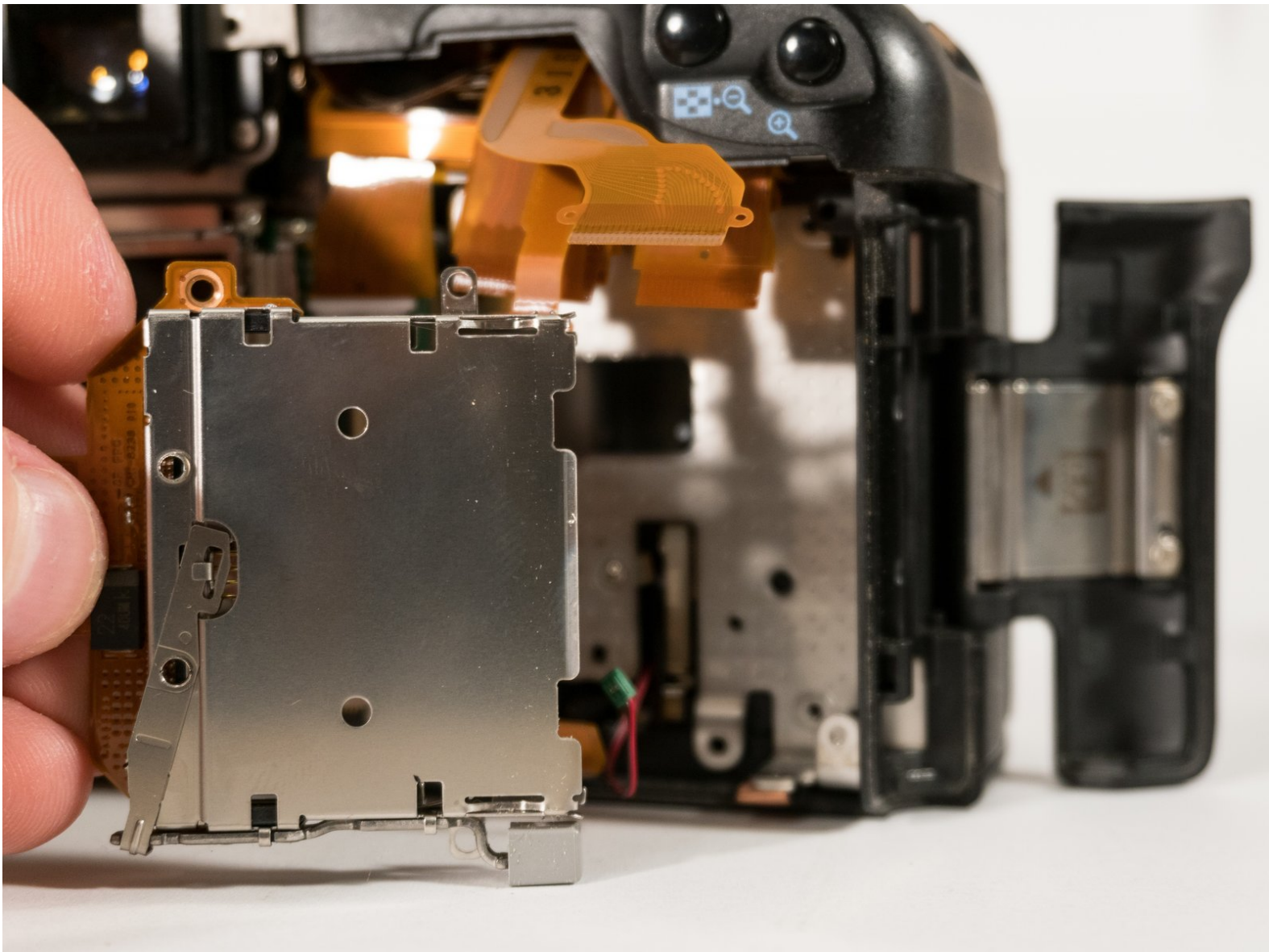




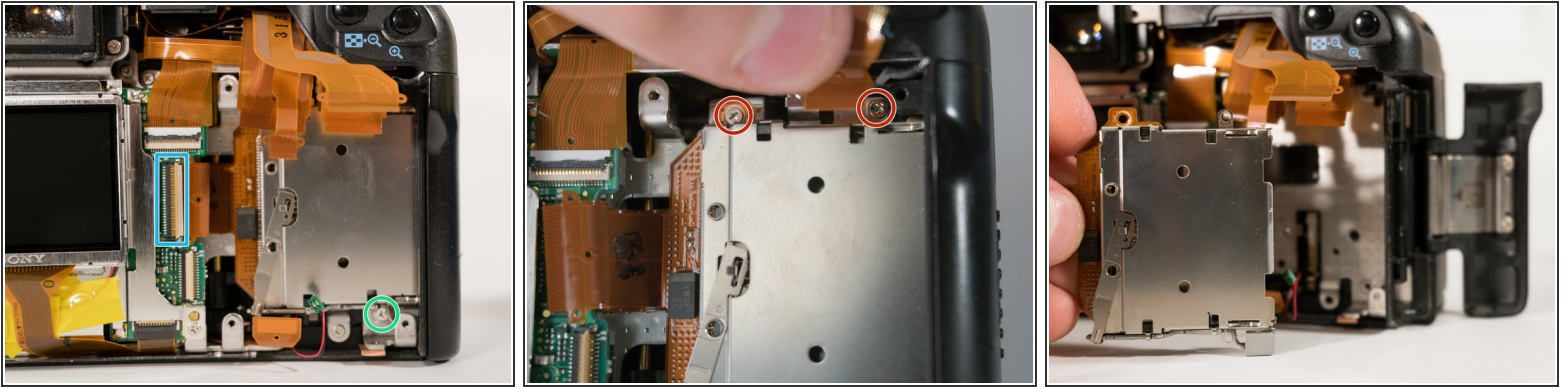
Canon EOS 20D CF Card Slot Replacement

This will help people to fix/replace their CF card slot with damaged pins, which is a fairly typical issue for this model of camera.

Written By: Alec M



Step 1 — CF Card Slot



- Open the connector for the CF slot.
- Remove the two screws holding the top of the CF slot in place.
- Remove the one last screw holding the CF slot in on the bottom.
- Remove the CF slot.

To reassemble your device, follow these instructions in reverse order.

This document was last generated on 2019-01-04 08:06:48 AM.