



Polaroid OneStep 2 Shutter Switch Replacement

Replace the shutter switch in order to capture the photos with your Polaroid OneStep 2.

Written By: Abby Boucher



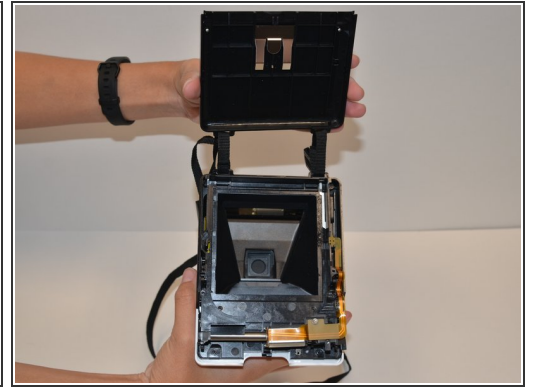
INTRODUCTION

If you need to replace the shutter switch, use this guide to access the inside of the camera. You may need to replace the shutter switch if your shutter is not firing and your camera is not taking photos.

TOOLS:

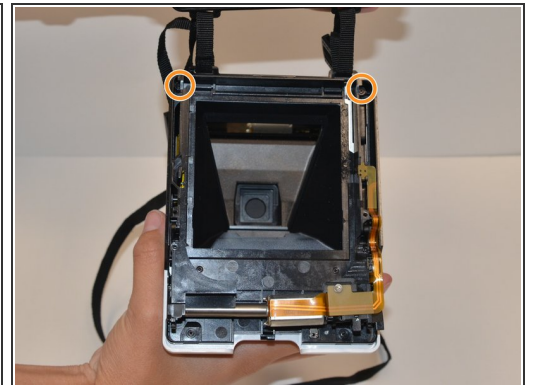
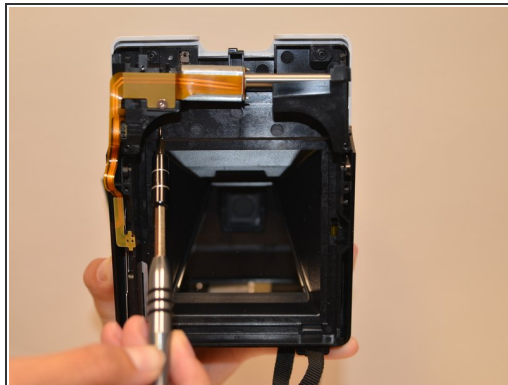
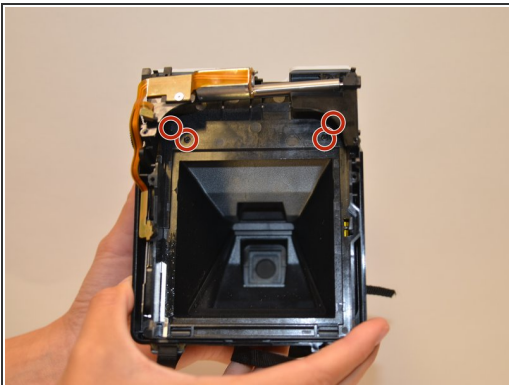
- [Phillips #0 Screwdriver](#) (1)
-

Step 1 — Shutter Switch



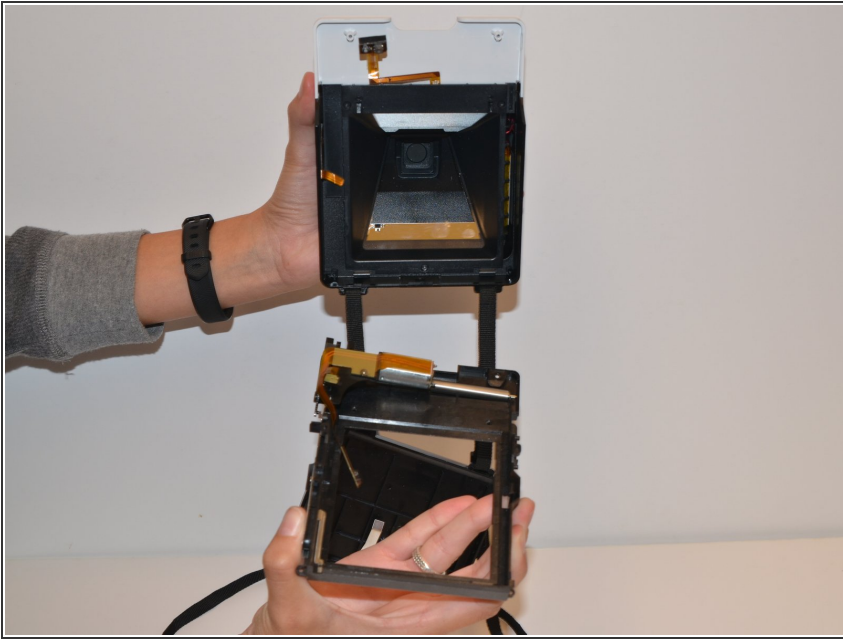
- Remove the four 5mm screws on the base of the camera using a Phillips #0 screwdriver.
- Remove the two pieces of the base.

Step 2



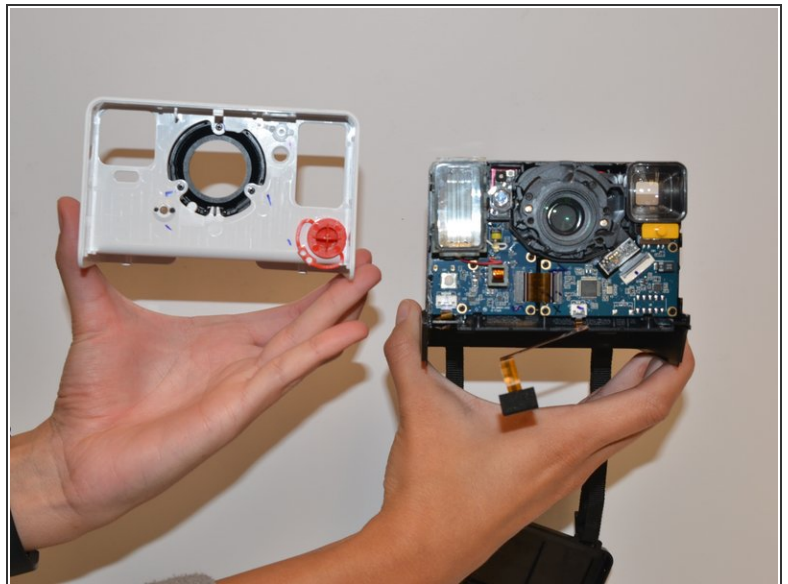
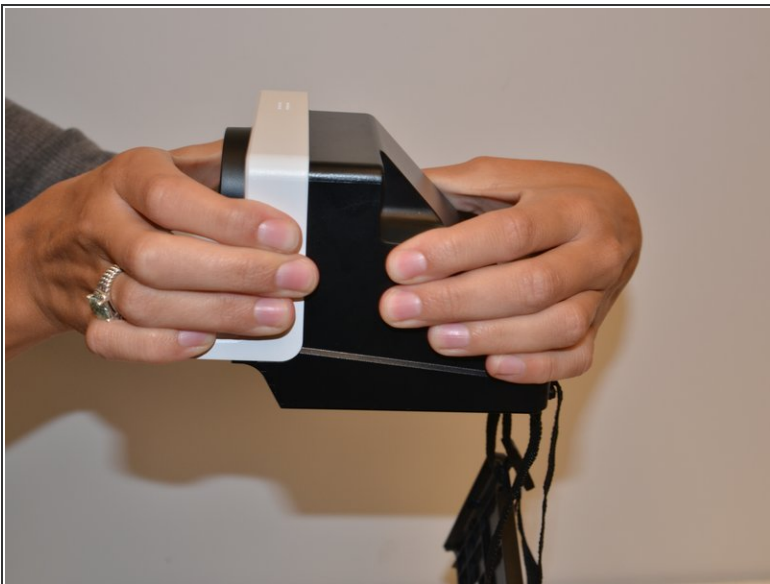
- Remove the four 5mm screws on the top of the inside base piece using a Phillips #0 screwdriver.
- Remove the two 5mm screws on the bottom of the inside base piece which is near the strap with the same screwdriver.

Step 3



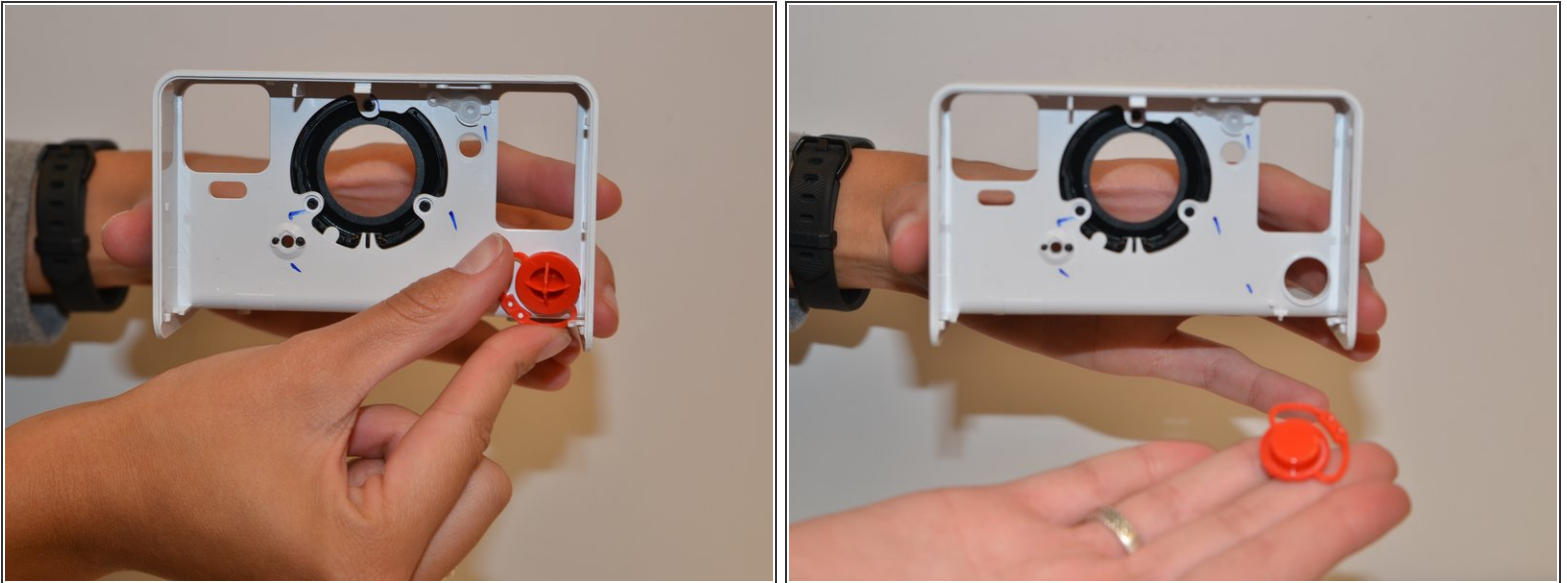
- Remove the black inside base piece.

Step 4



- With force separate the white front piece from the back of the camera. You will use your hands and pull it apart.

Step 5



- With force pull the shutter button away from the white piece of the camera.

To reassemble your device, follow these instructions in reverse order.

This document was last generated on 2019-07-21 10:20:22 AM.