



Nude Move S Teardown

Written By: Phoebe Kirkland



Step 1 — Speaker before tear down



- Insert wisdom here.

Step 2 — Remove the cable



- Insert wisdom here.

Step 3 — Remove the external case



- Insert wisdom here.

Step 4 — These are the three elements so far



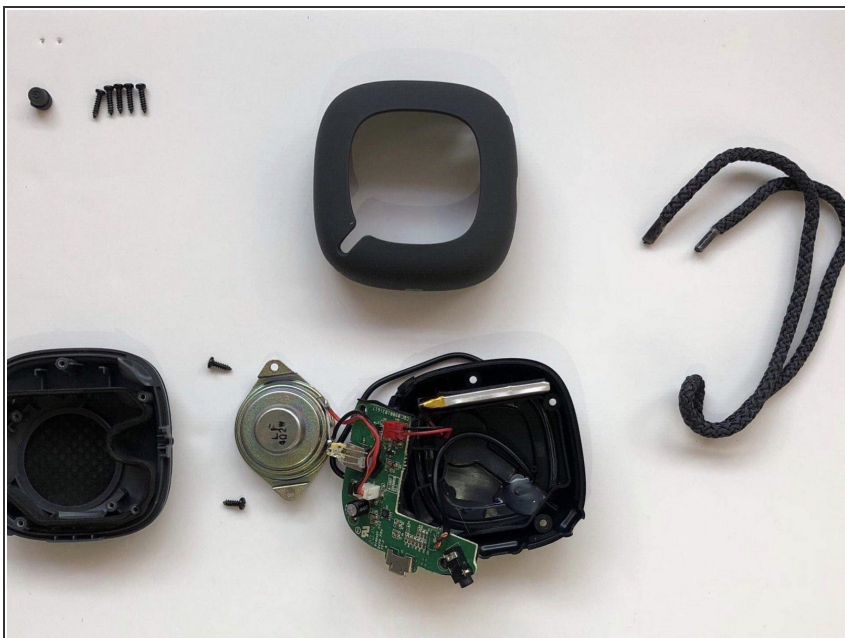
- Insert wisdom here.

Step 5 — Remove the PCB and silicone button



- Insert wisdom here.

Step 6 — This shows the parts so far



- Insert wisdom here.

Step 7 — Internal case removal and taking the speaker off of the pcb



- Insert wisdom here.

To reassemble your device, follow these instructions in reverse order.

This document was last generated on 2019-01-25 12:10:50 AM.