



Toshiba TECRA R940 RAM Replacement

The guide will outline the steps to replace the RAM in a Toshiba TECRA R940-S9430.

Written By: Jack Dutton



INTRODUCTION

This guide would be useful for replacing broken RAM or upgrading the working RAM to make your Toshiba TECRA R940 run better.

This laptop has a comparatively easy procedure to replace RAM.

TOOLS:

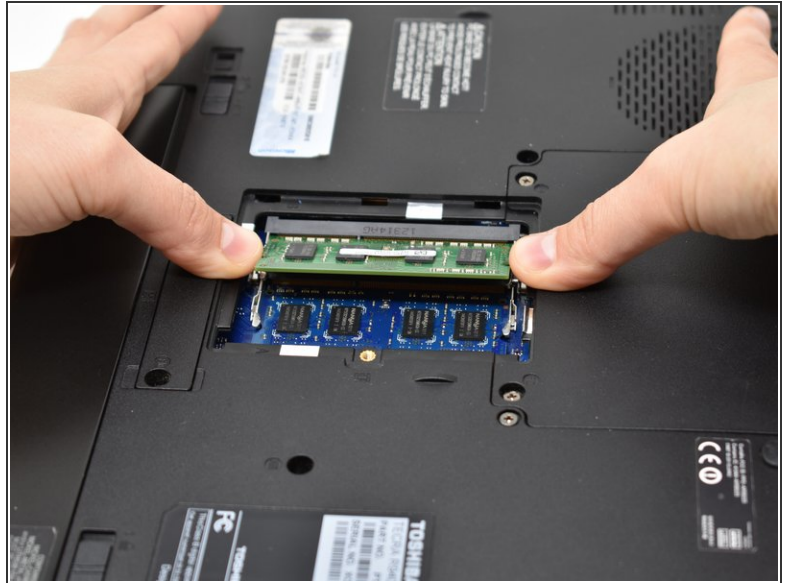
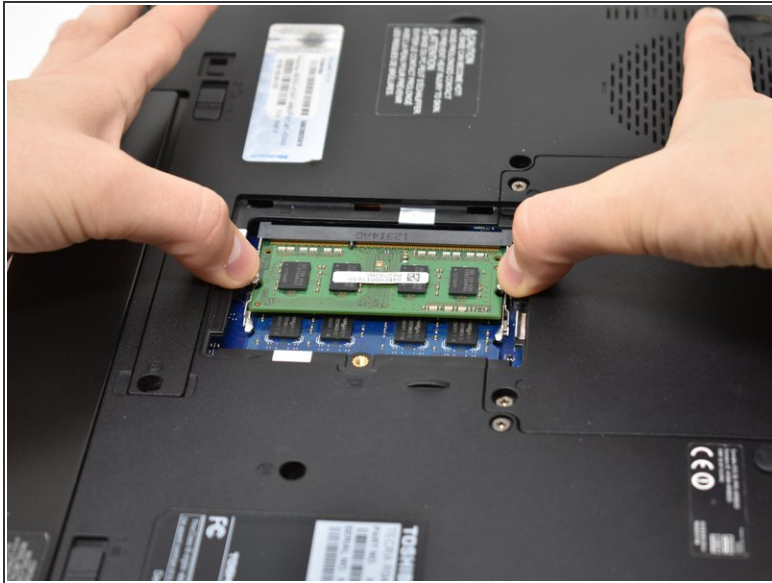
- [Phillips #0 Screwdriver](#) (1)
 - [iFixit Opening Tools](#) (1)
-

Step 1 — RAM



- Unscrew the screw attached to the small back panel, and set the back panel aside.
- ⓘ The screw should not come completely out of the hole when unscrewed. If it does, do not be alarmed as it will still screw back in.

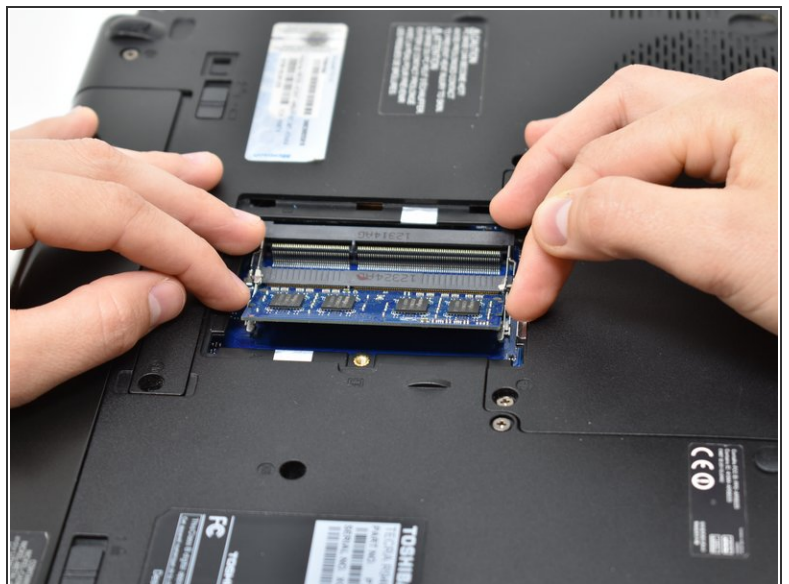
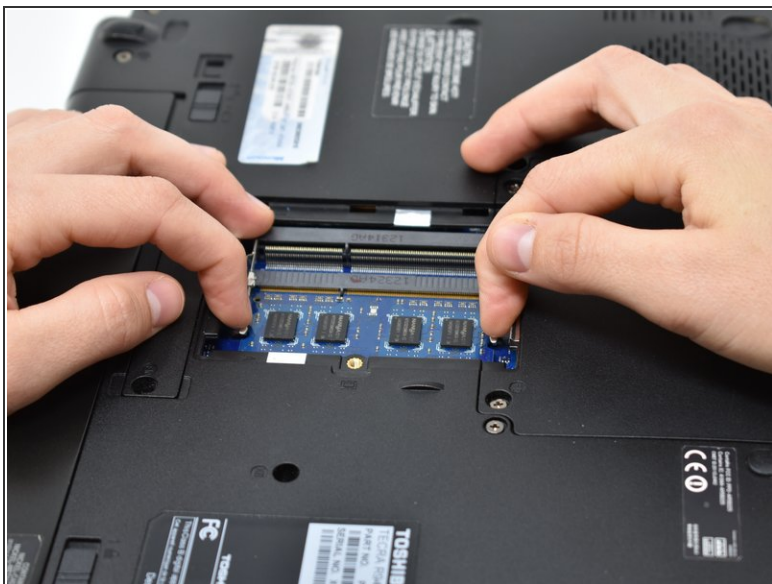
Step 2



- Pull the metal brackets away from the RAM card to unlock it from the slot, then pull the RAM card out.

⚠ When handling the RAM cards try not to touch the gold colored metal at the base, as this could cause the cards to malfunction. Best practice is to try and hold the cards by the edges.

Step 3



- Repeat the previous step of pulling the RAM card out for the second card, but using the lower brackets.

To reassemble your device, follow these instructions in reverse order.

This document was last generated on 2019-01-14 08:24:30 PM.